

Catalog # 104B
Item number: 10876
Description:

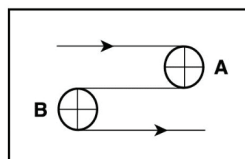
3 Ply Poly CR86 Blk PVC B x QW AS

International Designation:

E15/3 U1/QW Black AS

Construction:

| | |
|------------------------------|---------------------|
| Compound Top Cover | Polyester |
| Top Cover Thickness (in) | (0.10 mm) 0.0039 in |
| Top Cover Description | PU Impregnated |
| Top Cover Shore | N/A |
| Compound Bottom Cover | Polyester |
| Bottom Cover Thickness (in) | (0.00 mm) 0.0000 in |
| Bottom Cover Description | Quiet Weave |
| Bottom Cover Shore | N/A |
| Number of Plies | 3 |
| Anti Static | Yes |
| Overall Gauge (in) | (2.60 mm) 0.1024 in |
| Unit Weight- lb/PIW | 0.0425 lbs/PIW |
| Material Between Plies | PVC |
| Maximum Width (in) | 118 in |
| Temperature Range (°F)- High | 176 °F |
| Temperature Range (°F)- Low | -4 °F |

Pulley Diameter, Minimum


A) Normal Flex (120.00 mm) 4.7244 in

B) Back Flex (120.00 mm) 4.7244 in

Belt Strength:

Pull for 1% Elongation (15 N/mm) 86 lbs/sq in

Splice Instructions:

| | |
|------------------------|--------------|
| Foil | Yes |
| Splice Process | Finger |
| Press Temperature (°F) | 360 °F |
| Press Pressure (psi) | 27 lbs/sq in |

Note: Listed above is a guideline only. Every vulcanizer is different and will show different results. We recommend that you do a test splice with your press before attempting the actual belt splice.

Other:

| | |
|----------------|-----|
| Cross Rigid | Yes |
| Impression Top | No |
| Oil Resistant | No |
| Fire Resistant | No |
| FDA Approved | No |

Special Characteristics:

This belt was designed for tough materials handling applications where a PU impregnated cover offers excellent abrasion resistance in combination with a strong polyester carcass. The Quiet Weave polyester bottom fabric provides a low noise bottom for applications in warehouse and distribution centers. Also used in metal stamping and parts conveying.

*****All Values are nominal and subject to change without notice.*****

| | | | | | | | | |
|--|--|--|--|---|---|--|---|--|
| St. Louis, MO 800-727-2358 314-344-8500 | Boise, ID 800-423-4469 208-342-4681 | Charlotte, NC 800-849-2358 704-949-2100 | Grand Prairie, TX 800-727-2358 314-344-8555 | Philadelphia, PA 800-777-1314 215-295-1900 | Sacramento, CA 800-289-2358 916-419-7191 | Vancouver, WA 800-234-2358 360-567-4280 | Beltservice Canada 877-210-7423 905-565-9217 | Beltservice de Mexico +52 55 53620434 +44 2980 3266 |
|--|--|--|--|---|---|--|---|--|

BARE/FABRIC COVERED PVC/RUBBER

3 PLY POLY CR86 BLK PVC B X QW AS

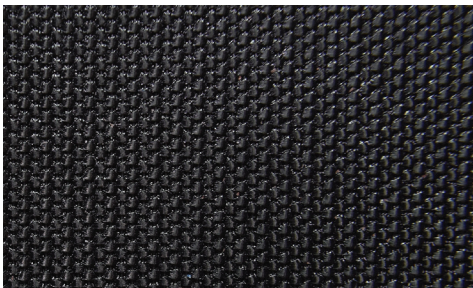
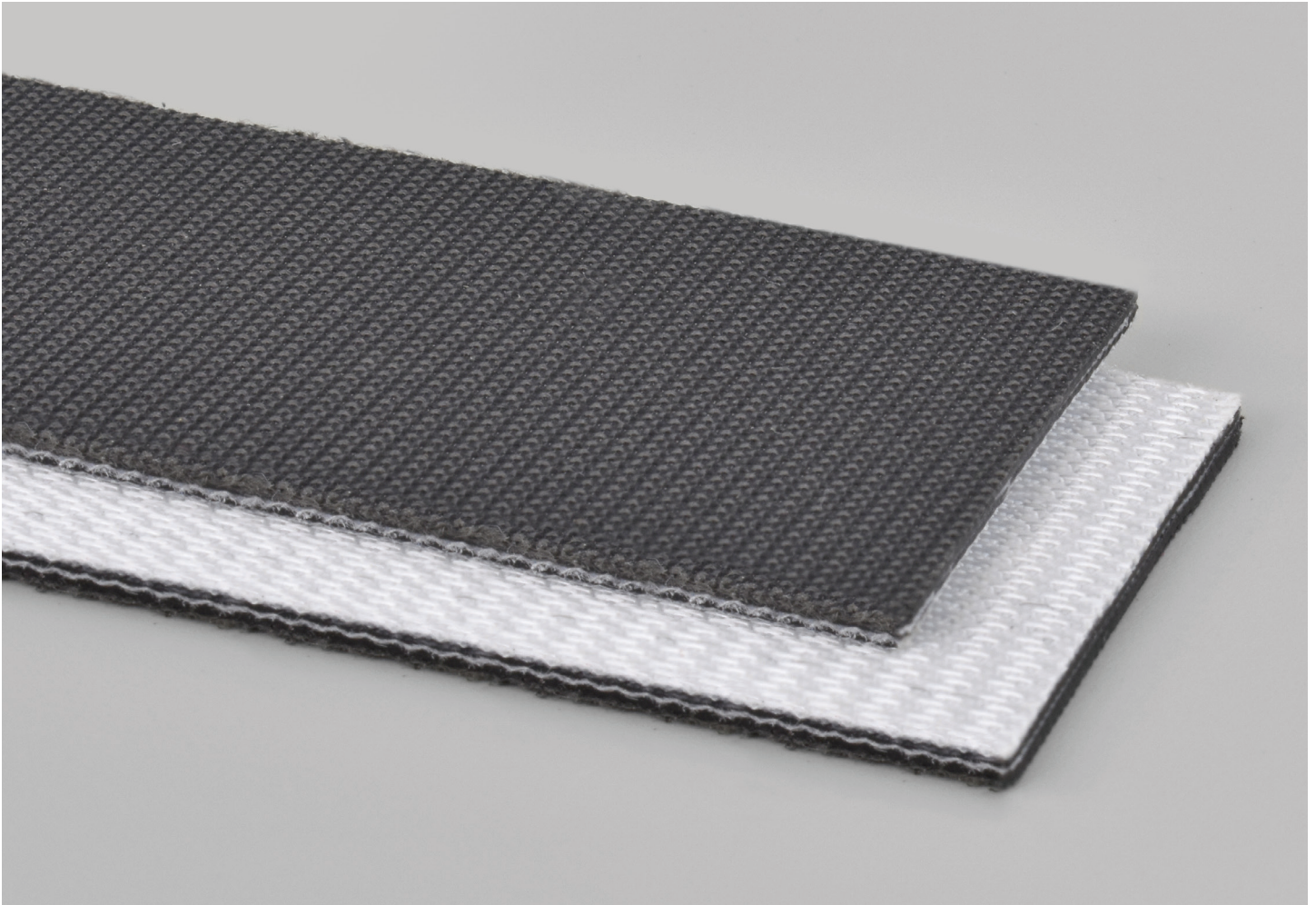
INTERNATIONAL DESIGNATION: E15/3 U1/QW BLACK AS

104B

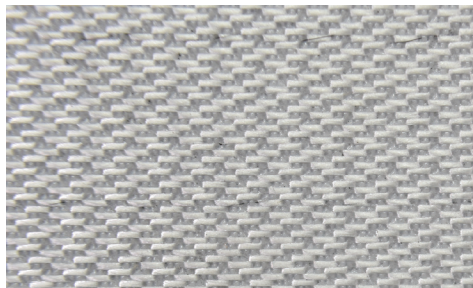
Catalog Number

10876

Part Number



Top Cover View



Bottom Cover View



Ply View



BELTSERVICE
CORPORATION

beltservice.com

REV 3/23