

**Catalog # 112**
**Item number: 10798**
**Description:**

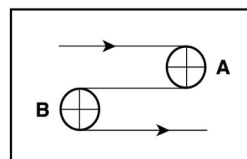
2 Ply Poly CR45 Blk PVC C x Bare AS

**International Designation:**

E8/2 0/V5 Black M AS

**Construction:**

Compound Top Cover	Black PVC
Top Cover Thickness (in)	(0.50 mm) 0.0196 in
Top Cover Description	Matte
Top Cover Shore	80
Compound Bottom Cover	Polyester
Bottom Cover Thickness (in)	(0.00 mm) 0.0000 in
Bottom Cover Description	Bare
Bottom Cover Shore	N/A
Number of Plies	2
Anti Static	Yes
Overall Gauge (in)	(2.00 mm) 0.0787 in
Unit Weight- lb/PIW	0.0358 lbs/PIW
Material Between Plies	PVC
Maximum Width (in)	118 in
Temperature Range (°F)- High	176 °F
Temperature Range (°F)- Low	5 °F

**Pulley Diameter, Minimum**


A) Normal Flex (29.97 mm) 1.1800 in

B) Back Flex (49.78 mm) 1.9600 in

**Belt Strength:**

Pull for 1% Elongation (8 N/mm) 46 lbs/sq in

**Splice Instructions:**

Foil	Yes
Splice Process	Finger
Press Temperature (°F)	330 °F
Press Pressure (psi)	25 lbs/sq in

Note: Listed above is a guideline only. Every vulcanizer is different and will show different results. We recommend that you do a test splice with your press before attempting the actual belt splice.

**Other:**

Cross Rigid	Yes
Impression Top	No
Oil Resistant	No
Fire Resistant	No
FDA Approved	No

**Special Characteristics:**

The 112 belt has a matte finish black PVC cover that is excellent for light duty general conveying in most packaging applications. The top cover has an anti glare matte finish ideal for use in optical sorting applications.

\*\*\*\*\*All Values are nominal and subject to change without notice.\*\*\*\*\*

<b>St. Louis, MO</b> 800-727-2358 314-344-8500	<b>Boise, ID</b> 800-423-4469 208-342-4681	<b>Charlotte, NC</b> 800-849-2358 704-949-2100	<b>Grand Prairie, TX</b> 800-727-2358 314-344-8555	<b>Philadelphia, PA</b> 800-777-1314 215-295-1900	<b>Sacramento, CA</b> 800-289-2358 916-419-7191	<b>Vancouver, WA</b> 800-234-2358 360-567-4280	<b>Beltservice Canada</b> 877-210-7423 905-565-9217	<b>Beltservice de Mexic</b> +52 55 53620434 +44 2980 3266
------------------------------------------------------	--------------------------------------------------	------------------------------------------------------	----------------------------------------------------------	---------------------------------------------------------	-------------------------------------------------------	------------------------------------------------------	-----------------------------------------------------------	-----------------------------------------------------------------

# MATERIAL HANDLING PVC

2 PLY POLY CR45 BLK PVC C X B AS

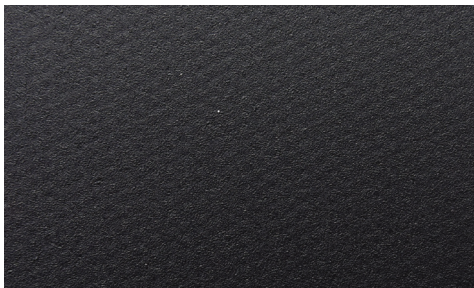
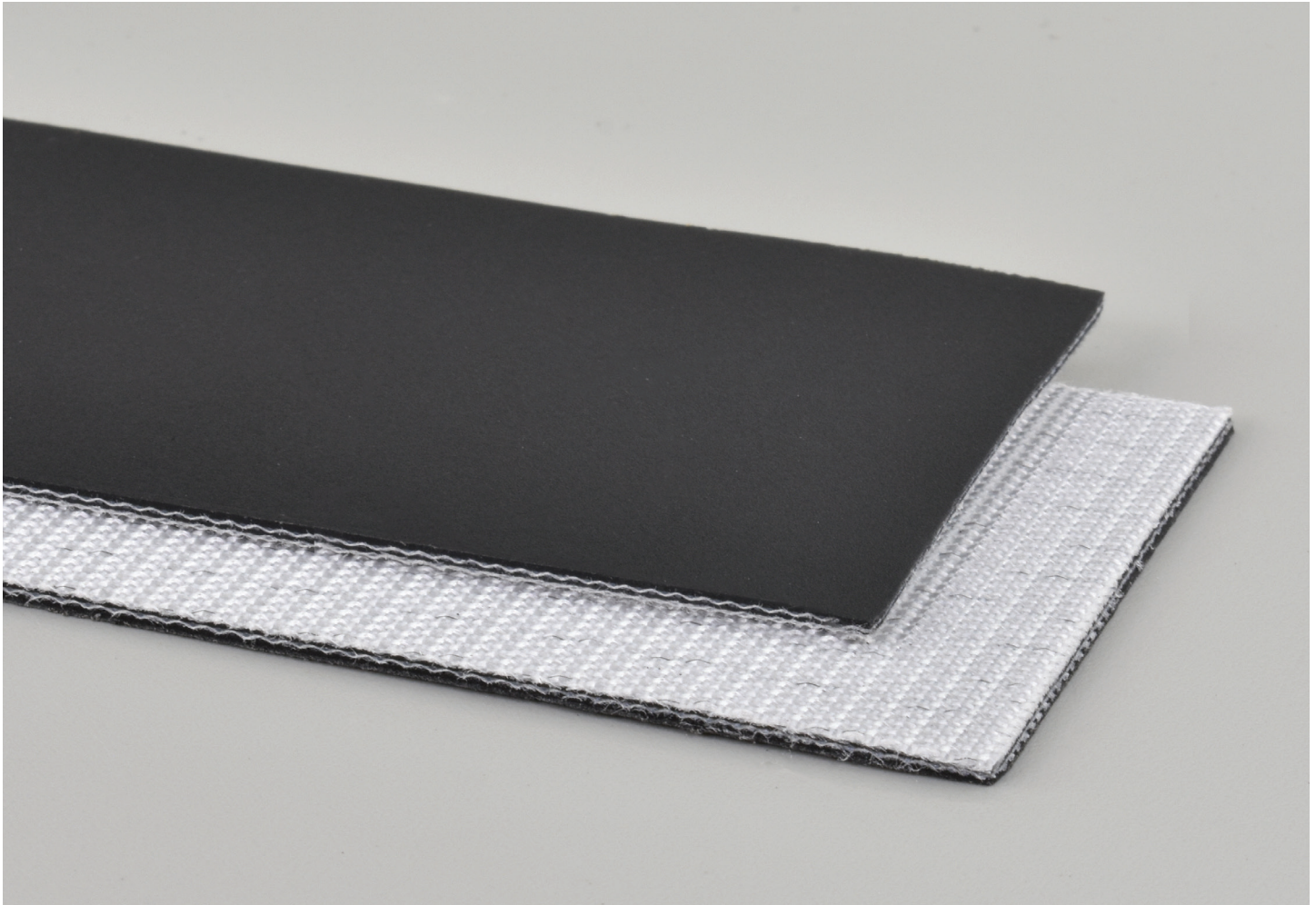
INTERNATIONAL DESIGNATION: E8/2 0/V5 BLACK M AS

**112**

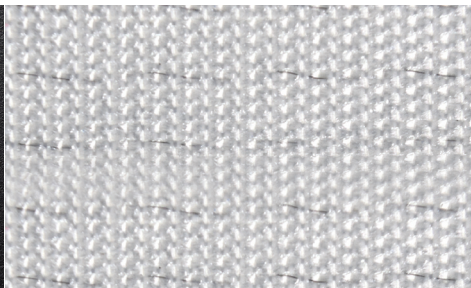
Catalog Number

**10798**

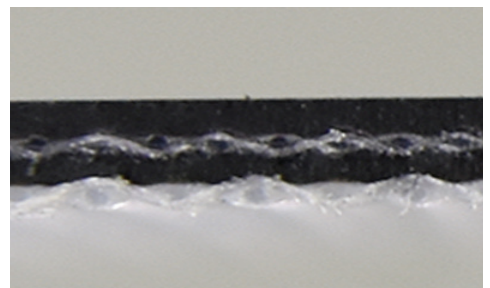
Part Number



Top Cover View



Bottom Cover View



Ply View