

Catalog # 113
Item number: 10808
Description:

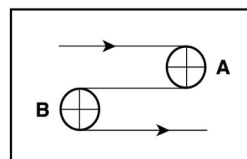
2 Ply Poly CR46 Dark Green PU Matte x Bare AS

International Designation:

E8/2 0/U3 M Green AS

Construction:

| | |
|------------------------------|---------------------|
| Compound Top Cover | Green PU |
| Top Cover Thickness (in) | (0.30 mm) 0.0120 in |
| Top Cover Description | Matte |
| Top Cover Shore | 92 |
| Compound Bottom Cover | Polyester |
| Bottom Cover Thickness (in) | (0.00 mm) 0.0000 in |
| Bottom Cover Description | PU Impregnated |
| Bottom Cover Shore | N/A |
| Number of Plies | 2 |
| Anti Static | Yes |
| Overall Gauge (in) | (1.40 mm) 0.0550 in |
| Unit Weight- lb/PIW | 0.0242 lbs/PIW |
| Material Between Plies | PU |
| Maximum Width (in) | 84 in |
| Temperature Range (°F)- High | 176 °F |
| Temperature Range (°F)- Low | -4 °F |

Pulley Diameter, Minimum


A) Normal Flex (20.07 mm) 0.7900 in

B) Back Flex (39.88 mm) 1.5700 in

Belt Strength:

Pull for 1% Elongation (8 N/mm) 46 lbs/sq in

Splice Instructions:

| | |
|------------------------|--------------|
| Foil | Yes |
| Splice Process | Finger |
| Press Temperature (°F) | 320 °F |
| Press Pressure (psi) | 25 lbs/sq in |

Note: Listed above is a guideline only. Every vulcanizer is different and will show different results. We recommend that you do a test splice with your press before attempting the actual belt splice.

Other:

| | |
|----------------|-----|
| Cross Rigid | Yes |
| Impression Top | No |
| Oil Resistant | Yes |
| Fire Resistant | No |
| FDA Approved | No |

Special Characteristics:

The 113 belt has a matte finish green PU top cover that is abrasion resistant due to the 95 durometer top cover. This belt is generally used for non food grade applications in packaging or areas where they need a non glare top cover.

*****All Values are nominal and subject to change without notice.*****

| | | | | | | | | |
|--|--|--|--|---|---|--|---|---|
| St. Louis, MO 800-727-2358 314-344-8500 | Boise, ID 800-423-4469 208-342-4681 | Charlotte, NC 800-849-2358 704-949-2100 | Grand Prairie, TX 800-727-2358 314-344-8555 | Philadelphia, PA 800-777-1314 215-295-1900 | Sacramento, CA 800-289-2358 916-419-7191 | Vancouver, WA 800-234-2358 360-567-4280 | Beltservice Canada 877-210-7423 905-565-9217 | Beltservice de Mexic +52 55 53620434 +44 2980 3266 |
|--|--|--|--|---|---|--|---|---|

MATERIAL HANDLING PU

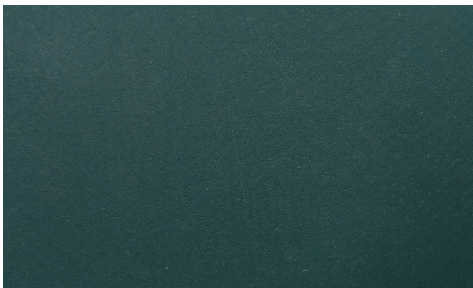
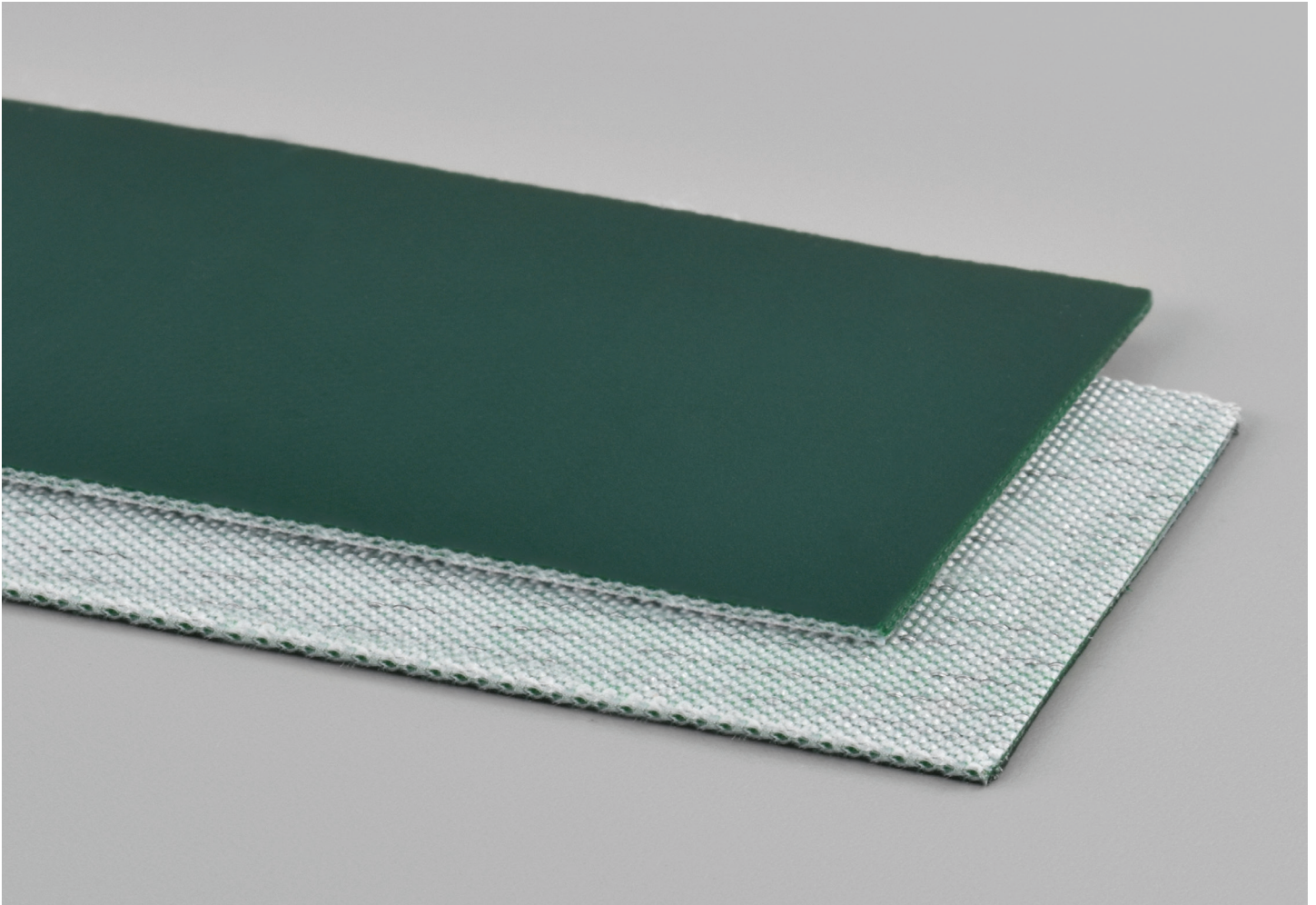
2 PLY POLY CR46 DARK GREEN PU MATTE X B AS
INTERNATIONAL DESIGNATION: E8/2 0/U3 M GREEN AS

113

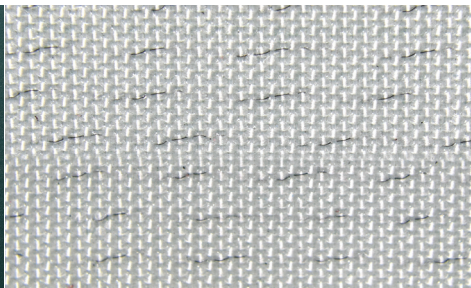
Catalog Number

10808

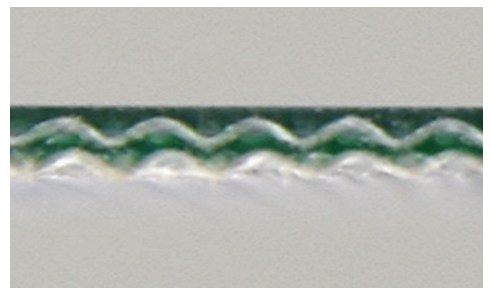
Part Number



Top Cover View



Bottom Cover View



Ply View



BELTSERVICE
CORPORATION

beltservice.com

REV 3/23