

Catalog # **2B8**
Item number: **10830**
Description:

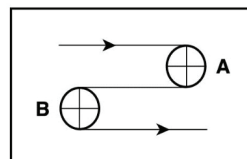
2 Ply Poly CR45 White SI x Bare HT AS FDA

International Designation:

E8/2 0/SI3 HT AS FDA

Construction:

Compound Top Cover	White Silicone
Top Cover Thickness (in)	(0.30 mm) 0.0118 in
Top Cover Description	Silicone
Top Cover Shore	30
Compound Bottom Cover	Polyester
Bottom Cover Thickness (in)	(0.00 mm) 0.0000 in
Bottom Cover Description	PU Impregnated
Bottom Cover Shore	N/A
Number of Plies	2
Anti Static	Yes
Overall Gauge (in)	(2.30 mm) 0.0905 in
Unit Weight- lb/PIW	0.0478 lbs/PIW
Material Between Plies	Silicone
Maximum Width (in)	72 in
Temperature Range (°F)- High	356 °F
Temperature Range (°F)- Low	-40 °F

Pulley Diameter, Minimum


A) Normal Flex	(49.78 mm) 1.9600 in
B) Back Flex	(88.90 mm) 3.5000 in

Belt Strength:

Pull for 1% Elongation	(8 N/mm) 45 lbs/sq in
------------------------	-----------------------

Splice Instructions:

Foil	No
Splice Process	Step Hot
Press Temperature (°F)	200 °F
Press Pressure (psi)	25 lbs/sq in

Note: Listed above is a guideline only. Every vulcanizer is different and will show different results. We recommend that you do a test splice with your press before attempting the actual belt splice.

Other:

Cross Rigid	Yes
Impression Top	No
Oil Resistant	Yes
Fire Resistant	No
FDA Approved	Yes

Special Characteristics:

The 2 ply silicone HT (High Temperature) belt is a two ply monofilament carcass with a smooth silicone top cover and silicone intermediate skim. Excellent for use with hot sticky product and in applications where products are heated or conveyed in environments with elevated temperatures. Also good for very low temperatures. This belt is highly flexible and can be spliced in the traditional mechanical or endless methods.

*****All Values are nominal and subject to change without notice.*****

St. Louis, MO 800-727-2358 314-344-8500	Boise, ID 800-423-4469 208-342-4681	Charlotte, NC 800-849-2358 704-949-2100	Grand Prairie, TX 800-727-2358 314-344-8555	Philadelphia, PA 800-777-1314 215-295-1900	Sacramento, CA 800-289-2358 916-419-7191	Vancouver, WA 800-234-2358 360-567-4280	Beltservice Canada 877-210-7423 905-565-9217	Beltservice de Mexic +52 55 53620434 +44 2980 3266
--	--	--	--	---	---	--	---	---

SILICONE COVERS FDA

2 PLY POLY CR45 WHITE SI X B HT AS FDA

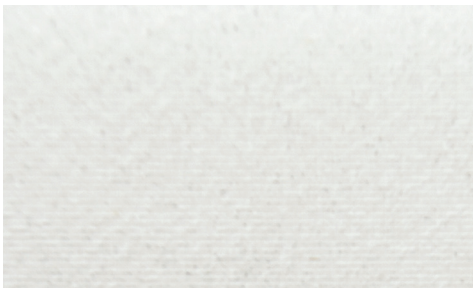
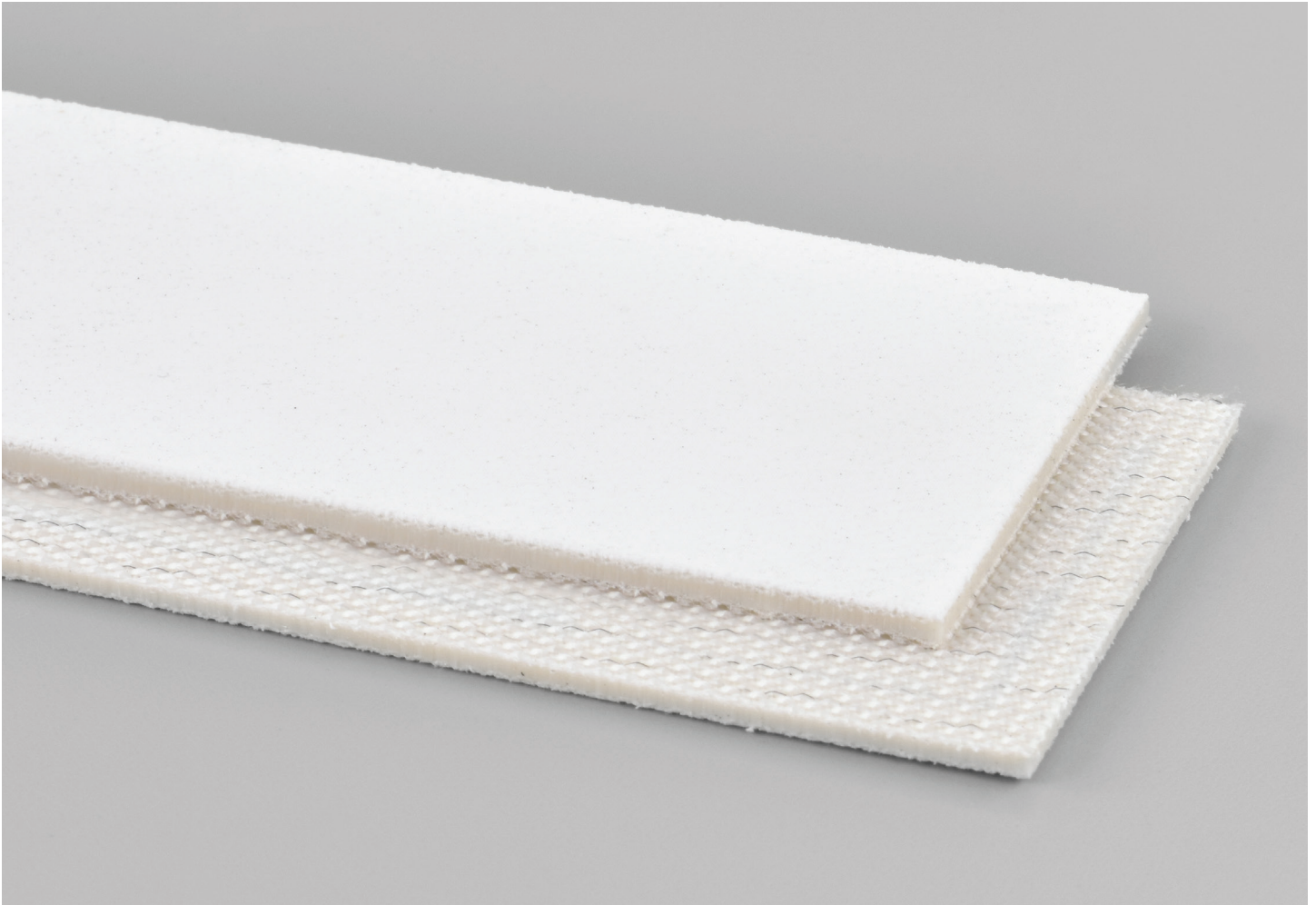
INTERNATIONAL DESIGNATION: E8/2 0/SI3 HT AS FDA

2B8

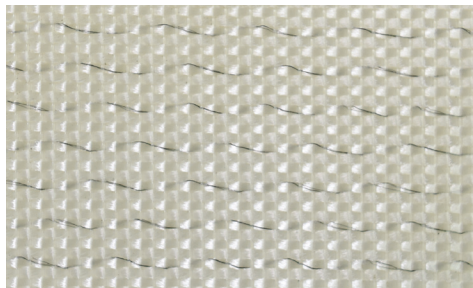
Catalog Number

10830

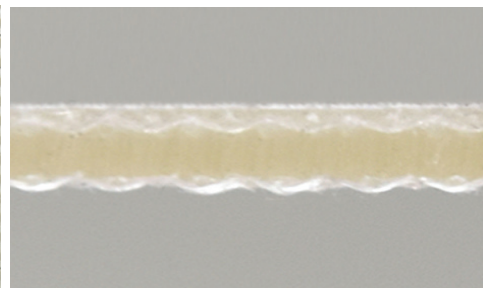
Part Number



Top Cover View



Bottom Cover View



Ply View



BELTSERVICE
CORPORATION

beltservice.com

REV 3/23