

Catalog # **302**
Item number: **33462**
Description:

Magnetthane MTxMT 85A 2mm

International Designation:

N/A

Pulley Diameter, Minimum

Min. Pulley Dia. - Head @ 80 - 100% Tension 0.00 in

Min. Pulley Dia. - Head @ 60 - 79% Tension 0.00 in

Min. Pulley Dia. - Head @ 59% Tension or Below 0.00 in

Minimum Pulley Diameter- Tail 0.00 in

Construction:

Compound Top Cover N/A

Color N/A

Top Cover Thickness (in) (0.00 mm) 0.00 in

Top Cover Description N/A

Compound Bottom Cover N/A

Bottom Cover Thickness (in) (0.00 mm) 0.00 in

Bottom Cover Description N/A

Number of Plies N/A

Overall Gauge (in) (0.00 mm) 0.00 in

Unit Weight- lb/PIW 0.0000 lbs/PIW

Carcass Type N/A

Compound N/A

Temperature Range (°F)- High 0 °F

Temperature Range (°F)- Low 0 °F

Splice Instructions:

Splice Step Size 0.00 in

Splice Process N/A

Other:

Static Conducting No

Cross Rigid No

High Heat No

Impression Top No

Oil Resistant No

Fire Resistant No

FDA Approved No

Suggested Fasteners:

Flexco Plate/Rivet N/A

Flexco Hinged N/A

Alligator Staple N/A

Clipper Lace N/A

Alligator Lace N/A

Belt Strength:

Tension Rating (PIW) 0 PIW

Special Characteristics:

N/A

*****All Values are nominal and subject to change without notice.*****

St. Louis, MO	Boise, ID	Charlotte, NC	Grand Prairie, TX	Philadelphia, PA	Sacramento, CA	Vancouver, WA	Beltservice Canada	Beltservice de Mexico
800-727-2358	800-423-4469	800-849-2358	800-727-2358	800-777-1314	800-289-2358	800-234-2358	877-210-7423	+52 55 53620434
314-344-8500	208-342-4681	704-949-2100	314-344-8555	215-295-1900	916-419-7191	360-567-4280	905-565-9217	+44 2980 3266

DETECTABLE FLAT AND POSITIVE DRIVE

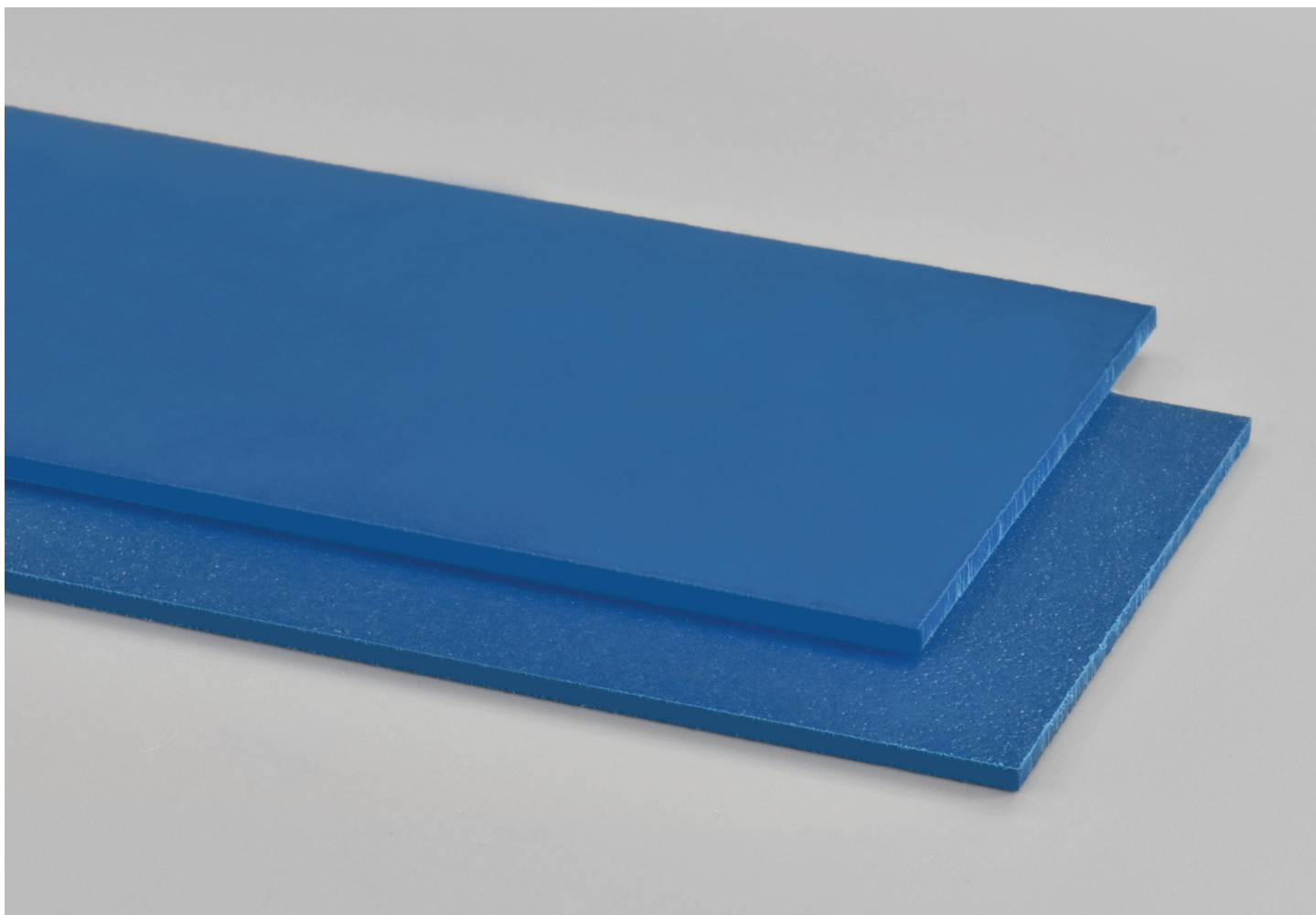
MAGNETHANE 85A 2MM

302

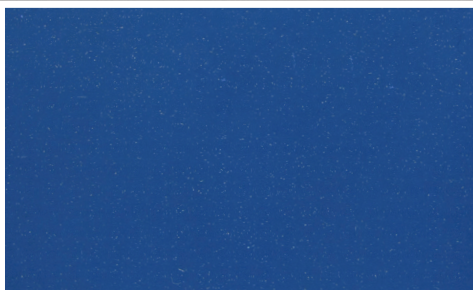
Catalog Number

33462

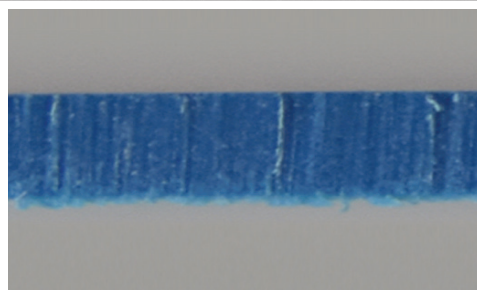
Part Number



Top Cover View



Bottom Cover View



Ply View



BELTSERVICE
CORPORATION

beltservice.com

REV 3/23