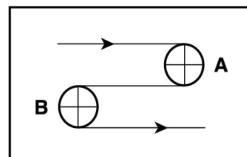


**Catalog #**                      **257**
**Item number:**                **50221**
**Description:**

PCPD2B-IO50 98A 3.5mm

**International Designation:**

N/A

**Pulley Diameter, Minimum**


A) Normal Flex                                      (0.00 mm) 0.0000 in

B) Back Flex                                        (0.00 mm) 0.0000 in

**Construction:**

Compound Top Cover                                      N/A

Top Cover Description                                      N/A

Top Cover Shore    N/A

Compound Bottom Cover                                      N/A

Bottom Cover Description                                      N/A

Bottom Cover Shore    N/A

Number of Plies    N/A

Anti Static    No

Overall Gauge (in)    (0.00 mm) 0.0000 in

Unit Weight- lb/PIW    0.0000 lbs/PIW

Maximum Width (in)    0 in

Temperature Range (°F)- High                                      0 °F

Temperature Range (°F)- Low                                      0 °F

**Belt Strength:**

Pull for 1% Elongation    (0 N/mm) 0 PIW

**Splice Instructions:**

Splice Process    N/A

Note: Listed above is a guideline only. Every vulcanizer is different and will show different results. We recommend that you do a test splice with your press before attempting the actual belt splice.

**Other:**

Oil Resistant    No

Fire Resistant    No

FDA Approved    No

**Special Characteristics:**

N/A

\*\*\*\*\*All Values are nominal and subject to change without notice.\*\*\*\*\*

<b>St. Louis, MO</b>	<b>Boise, ID</b>	<b>Charlotte, NC</b>	<b>Grand Prairie, TX</b>	<b>Philadelphia, PA</b>	<b>Sacramento, CA</b>	<b>Vancouver, WA</b>	<b>Beltservice Canada</b>	<b>Beltservice de Mexico</b>
800-727-2358	800-423-4469	800-849-2358	800-727-2358	800-777-1314	800-289-2358	800-234-2358	877-210-7423	+52 55 53620434
314-344-8500	208-342-4681	704-949-2100	314-344-8555	215-295-1900	916-419-7191	360-567-4280	905-565-9217	+44 2980 3266

# PROCLEAN POSITIVE DRIVE

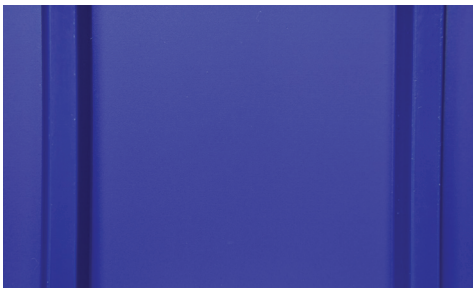
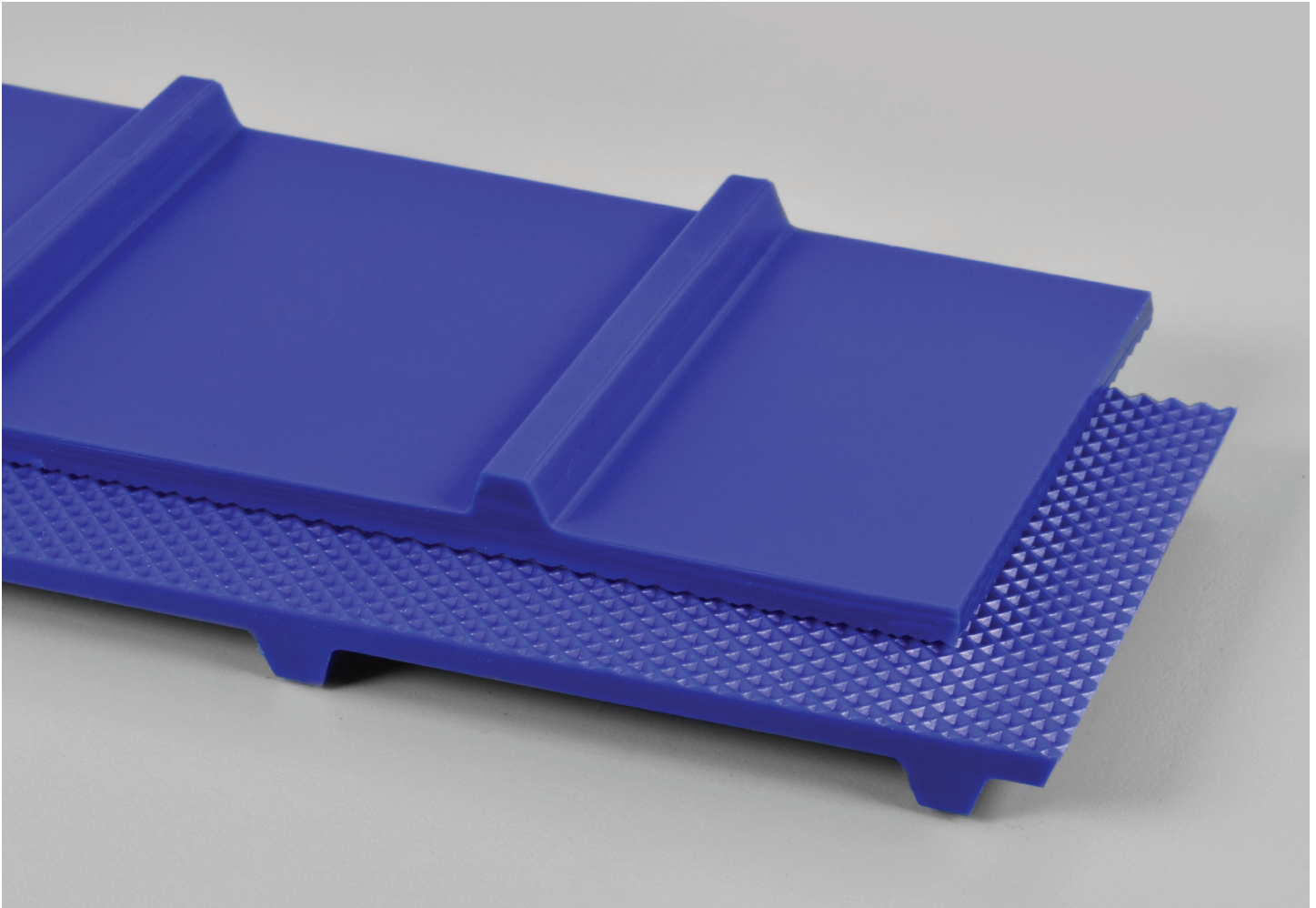
PCPD2B-ID 98A 2" PITCH

**257**

Catalog Number

**50221**

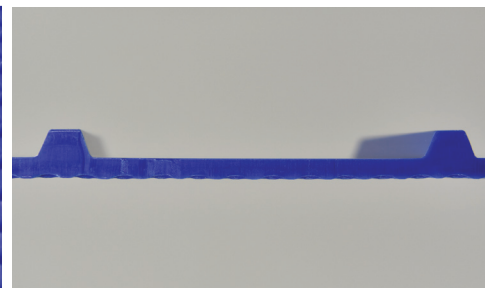
Part Number



Top Cover View



Bottom Cover View



Ply View



**BELTSERVICE**  
CORPORATION

[beltservice.com](http://beltservice.com)

REV 3/23