

**Catalog # 255**
**Item number: 42765**
**Description:**

PCPD2B MT 98A 3.5mm

**International Designation:**

N/A

**Construction:**

Compound Top Cover	Thermoplastic Polyurethane
--------------------	----------------------------

Top Cover Description	Matte
-----------------------	-------

Top Cover Shore	98 Shore A
-----------------	------------

Compound Bottom Cover	Thermoplastic Polyurethane
-----------------------	----------------------------

Bottom Cover Description	Smooth w/ 2 inch pitch tooth
--------------------------	------------------------------

Bottom Cover Shore	98 Shore A
--------------------	------------

Number of Plies	n/a
-----------------	-----

Anti Static	No
-------------	----

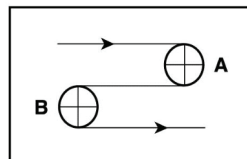
Overall Gauge (in)	(3.43 mm) 0.1350 in
--------------------	---------------------

Unit Weight- lb/PIW	0.0875 lbs/PIW
---------------------	----------------

Maximum Width (in)	60 in
--------------------	-------

Temperature Range (°F)- High	160 °F
------------------------------	--------

Temperature Range (°F)- Low	15 °F
-----------------------------	-------

**Pulley Diameter, Minimum**


A) Normal Flex	(80.00 mm) 3.1496 in
----------------	----------------------

B) Back Flex	(98.00 mm) 3.8583 in
--------------	----------------------

**Belt Strength:**

Pull for 1% Elongation	(3 N/mm) 19 PIW
------------------------	-----------------

**Splice Instructions:**

Splice Process	Butt Weld
----------------	-----------

Note: Listed above is a guideline only. Every vulcanizer is different and will show different results. We recommend that you do a test splice with your press before attempting the actual belt splice.

**Other:**

Oil Resistant	Yes
---------------	-----

Fire Resistant	No
----------------	----

FDA Approved	Yes
--------------	-----

**Special Characteristics:**

Proclean 2 inch Pitch PositiveDrive is compliant with NSF standard NSF/ANSI/3-A 14159-3-14 Hygiene Requirement for the design of mechanical belt conveyors for the use in meat and poultry processing. Designed for use in all food and washdown environments. Maximum belt speed is 200 fpm.

\*\*\*\*\*All Values are nominal and subject to change without notice.\*\*\*\*\*

<b>St. Louis, MO</b> 800-727-2358 314-344-8500	<b>Boise, ID</b> 800-423-4469 208-342-4681	<b>Charlotte, NC</b> 800-849-2358 704-949-2100	<b>Grand Prairie, TX</b> 800-727-2358 314-344-8555	<b>Philadelphia, PA</b> 800-777-1314 215-295-1900	<b>Sacramento, CA</b> 800-289-2358 916-419-7191	<b>Vancouver, WA</b> 800-234-2358 360-567-4280	<b>Beltservice Canada</b> 877-210-7423 905-565-9217	<b>Beltservice de Mexico</b> +52 55 53620434 +44 2980 3266
--	--	--	--	---	---	--	---	--

# PROCLEAN POSITIVE DRIVE

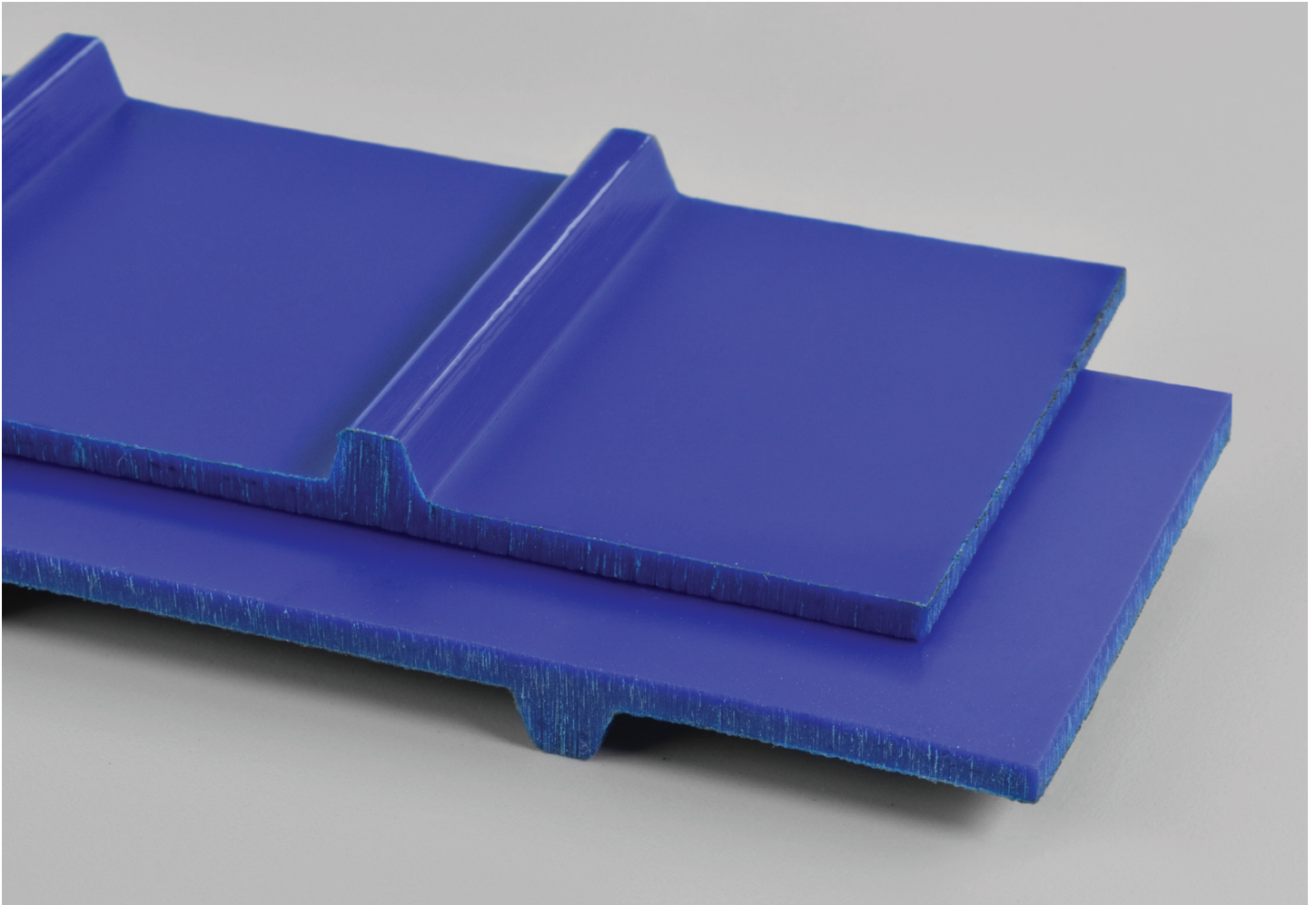
PCPD2B 98A 2" PITCH

**255**

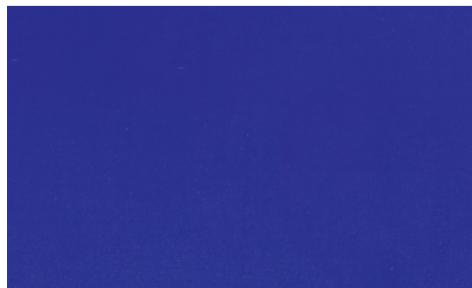
Catalog Number

**42765**

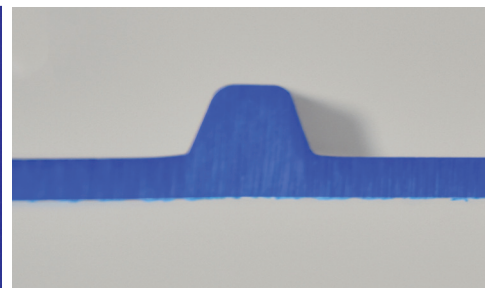
Part Number



Top Cover View



Bottom Cover View



Ply View