

Catalog # 108RGB
Item number: 49029
Description:

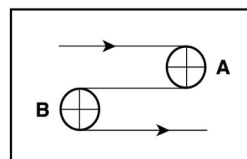
2 PUR X 55 HR X / CW

International Designation:

E10/2 U0/U55 RG Blue AS FDA/EU

Construction:

| | |
|------------------------------|---------------------|
| Compound Top Cover | Blue PU |
| Top Cover Thickness (in) | (0.55 mm) 0.0217 in |
| Top Cover Description | Rice Grain |
| Top Cover Shore | 93 |
| Compound Bottom Cover | PU Impregnated |
| Bottom Cover Thickness (in) | (0.00 mm) 0.0000 in |
| Bottom Cover Description | PU Impregnated |
| Bottom Cover Shore | N/A |
| Number of Plies | 2 |
| Anti Static | Yes |
| Overall Gauge (in) | (1.70 mm) 0.0670 in |
| Unit Weight- lb/PIW | 0.0308 lbs/PIW |
| Material Between Plies | PU |
| Maximum Width (in) | 78 in |
| Temperature Range (°F)- High | 140 °F |
| Temperature Range (°F)- Low | -13 °F |

Pulley Diameter, Minimum


| | |
|----------------|----------------------|
| A) Normal Flex | (25.00 mm) 0.9843 in |
| B) Back Flex | (50.00 mm) 1.9685 in |

Belt Strength:

| | |
|------------------------|------------------------|
| Pull for 1% Elongation | (10 N/mm) 57 lbs/sq in |
|------------------------|------------------------|

Splice Instructions:

| | |
|------------------------|--------------|
| Foil | No |
| Splice Process | Finger |
| Press Temperature (°F) | 300 °F |
| Press Pressure (psi) | 29 lbs/sq in |

Note: Listed above is a guideline only. Every vulcanizer is different and will show different results. We recommend that you do a test splice with your press before attempting the actual belt splice.

Other:

| | |
|----------------|-----|
| Cross Rigid | Yes |
| Impression Top | Yes |
| Oil Resistant | No |
| Fire Resistant | No |
| FDA Approved | Yes |

Special Characteristics:

#108RGB features a PU top cover with a rice grain pattern that allows for the easy release and transfer of bakery dough. The belt can wrap around a pulley as small as 25mm. It also is ideally suited for high speed optical sorting in food manufacturing. 108RGB is EU food approved.

*****All Values are nominal and subject to change without notice.*****

| | | | | | | | | |
|--|--|--|--|---|---|--|---|---|
| St. Louis, MO 800-727-2358 314-344-8500 | Boise, ID 800-423-4469 208-342-4681 | Charlotte, NC 800-849-2358 704-949-2100 | Grand Prairie, TX 800-727-2358 314-344-8555 | Philadelphia, PA 800-777-1314 215-295-1900 | Sacramento, CA 800-289-2358 916-419-7191 | Vancouver, WA 800-234-2358 360-567-4280 | Beltservice Canada 877-210-7423 905-565-9217 | Beltservice de Mexic +52 55 53620434 +44 2980 3266 |
|--|--|--|--|---|---|--|---|---|

MATERIAL HANDLING PU

2 PUR X 55 HR X/CW

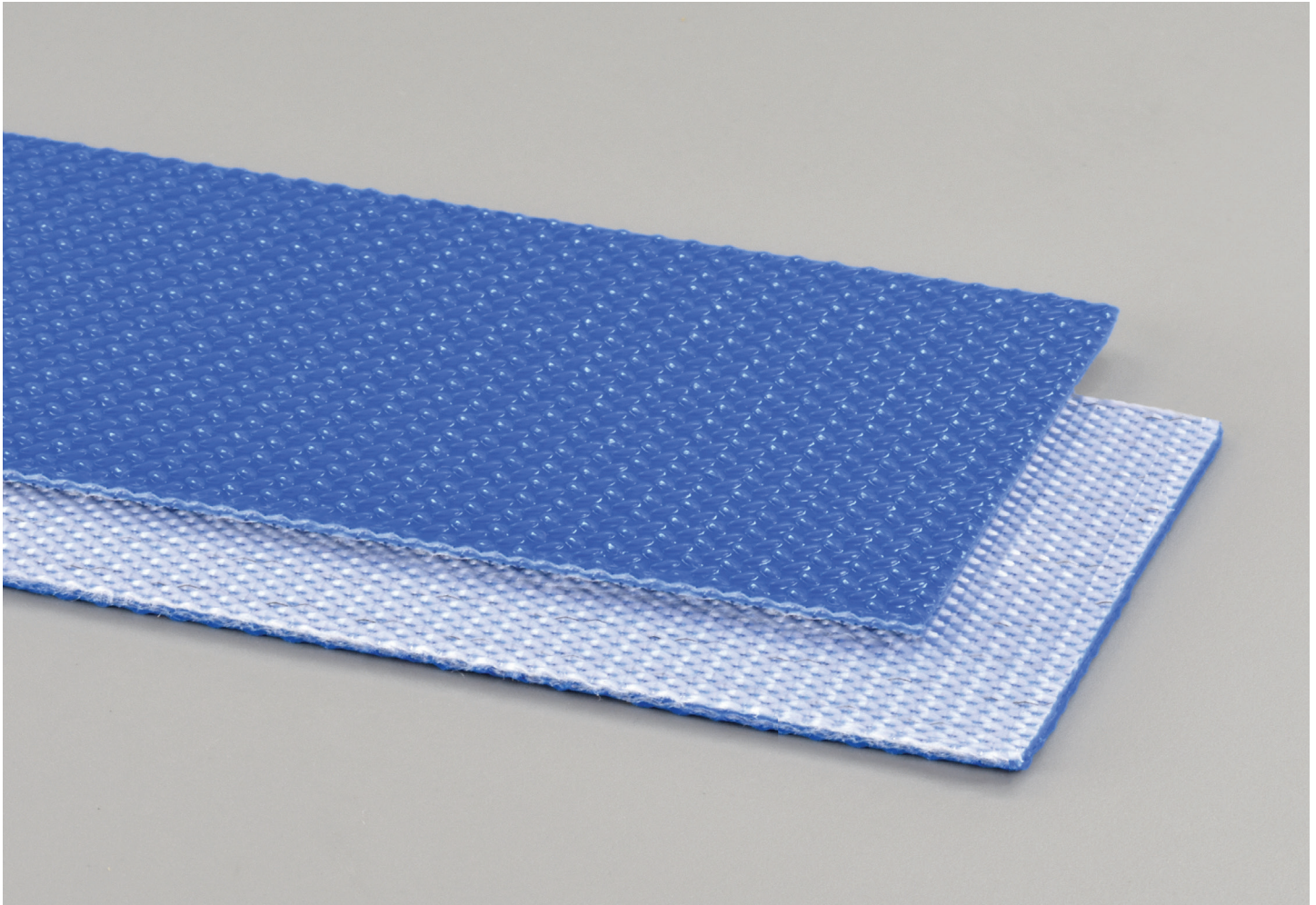
INTERNATIONAL DESIGNATION: E10/2 U0/U55 RG BLUE AS FDA/EU

108RGB

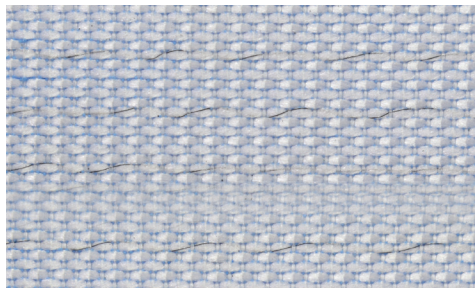
Catalog Number

49029

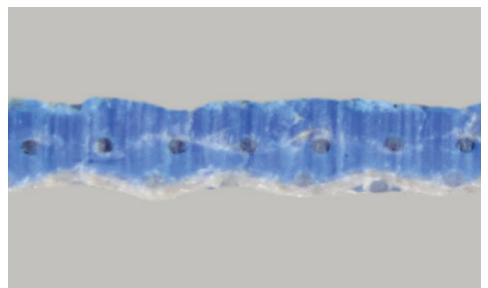
Part Number



Top Cover View



Bottom Cover View



Ply View



BELTSERVICE
CORPORATION

beltservice.com

REV 3/23