



N/A

## 4.00 in

## 225 PIW

Temperature Range (°F)- Low -40 °F

## Alligator Lace #7

Constructed of plies of a high-strength flexible synthetic carcass and feature a diamond-top surface molded in a diagonal rib design with unusually high coefficient of friction for conveying packaged and bagged goods up the very steepest of inclines. Tan Wedgegrip is non-marking and is used for sanding applications

\*\*\*\*\* All Values are nominal and subject to change without notice. \*\*\*\*\*

<b>St. Louis, MO</b>	<b>Boise, ID</b>	<b>Charlotte, NC</b>	<b>Grand Prairie, TX</b>	<b>Philadelphia, PA</b>	<b>Sacramento, CA</b>	<b>Vancouver, WA</b>	<b>Beltservice Canada</b>	<b>Beltservice de Mexic</b>
800-727-2358	800-423-4469	800-849-2358	800-727-2358	800-777-1314	800-289-2358	800-234-2358	877-210-7423	+52 55 53620434
314-344-8500	208-342-4681	704-949-2100	314-344-8555	215-295-1900	916-419-7191	360-567-4280	905-565-9217	+44 2980 3266



©Beltservice Corp.

# INCLINE WEDGEGRIP

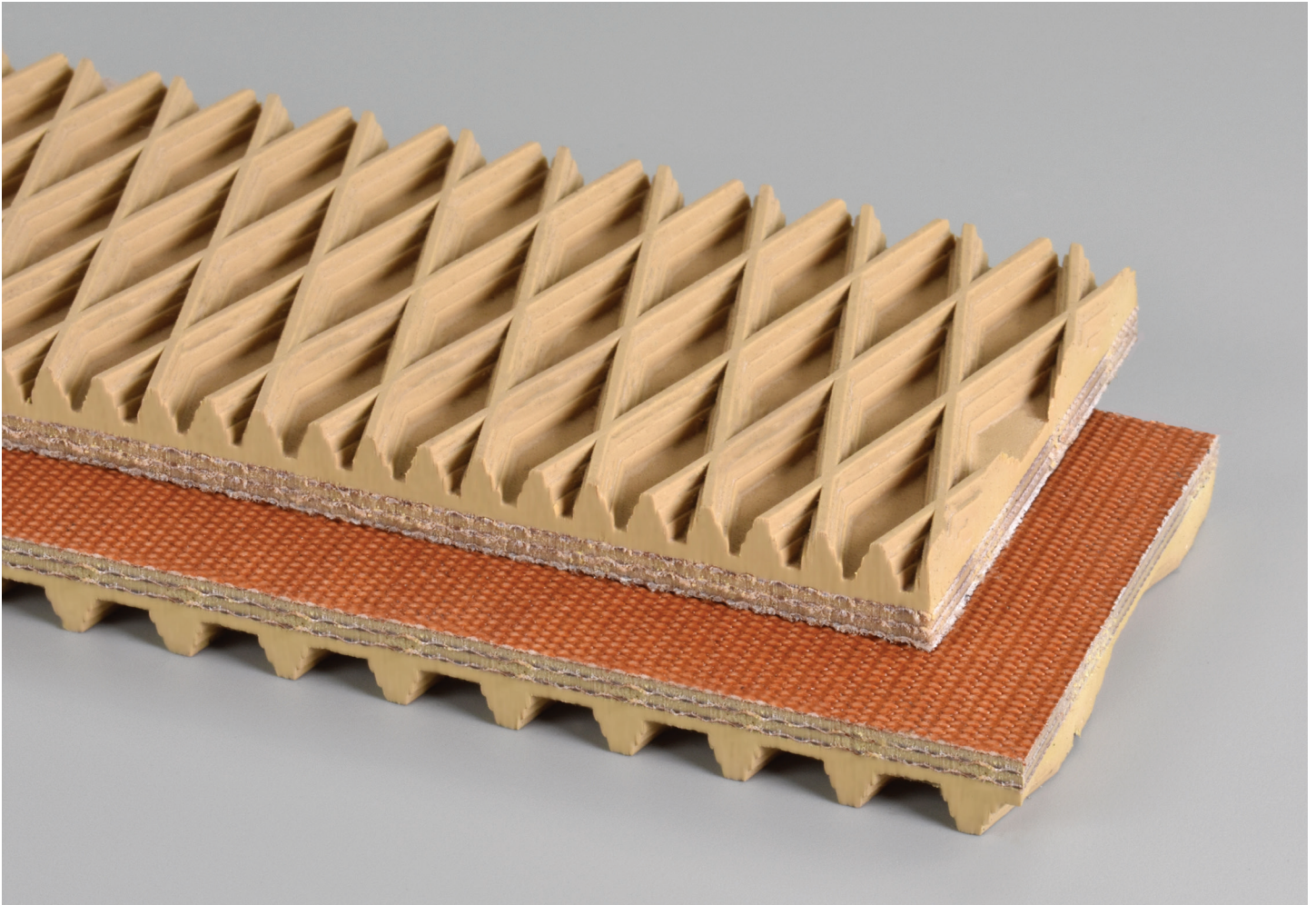
3 PLY 225 PIW TAN WEDGEGRIP X BARE

**67b**

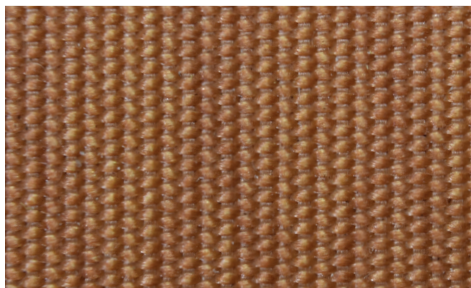
Catalog Number

**10642**

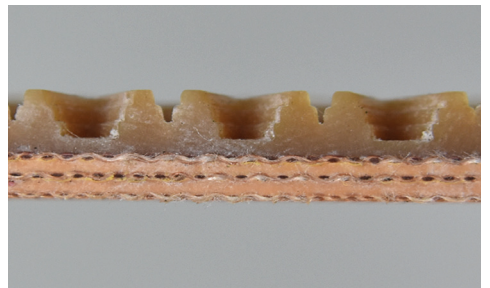
Part Number



Top Cover View



Bottom Cover View



Ply View



**BELTSERVICE**  
CORPORATION

[beltservice.com](http://beltservice.com)

REV 3/23