

Catalog # **67a**
Item number: **10612**
Description:
 2 Ply 150 Tan Wedgegrip x Bare
International Designation:
 N/A

Pulley Diameter, Minimum

Minimum Pulley Diameter 3.00 in

Belt Strength:

Tension Rating (PIW) 150 PIW

Construction:

Compound Top Cover	Tan SBR
Color	Tan
Top Cover Thickness (in)	(0.00 mm) 0.00 in
Top Cover Description	Diamond Stepped Walls
Compound Bottom Cover	Tan SBR
Bottom Cover Thickness (in)	(0.00 mm) 0.00 in
Bottom Cover Description	Bare
Number of Plies	2
Overall Gauge (in)	(7.14 mm) 9/32 in
Unit Weight- lb/PIW	0.1060 lbs/PIW
Carcass Type	Polyester
Compound	Tan SBR
Temperature Range (°F)- High	250 °F
Temperature Range (°F)- Low	-40 °F

Splice Instructions:

Splice Step	Yes
Splice Finger	No

Other:

Static Conducting	No
Cross Rigid	No
High Heat	No
Impression Top	Yes
Oil Resistant	No
Fire Resistant	No
FDA Approved	No

Suggested Fasteners:

Flexco Plate/Rivet	N/A
Flexco Hinged	N/A
Alligator Staple	#125
Clipper Lace	#1
Alligator Lace	#1

Special Characteristics:

Constructed of plies of a high-strength flexible synthetic carcass and feature a diamond-top surface molded in a diagonal rib design with unusually high coefficient of friction for conveying packaged and bagged goods up the very steepest of inclines. Tan Wedgegrip is non-marking.

*****All Values are nominal and subject to change without notice.*****

St. Louis, MO	Boise, ID	Charlotte, NC	Grand Prairie, TX	Philadelphia, PA	Sacramento, CA	Vancouver, WA	Beltservice Canada	Beltservice de Mexic
800-727-2358	800-423-4469	800-849-2358	800-727-2358	800-777-1314	800-289-2358	800-234-2358	877-210-7423	+52 55 53620434
314-344-8500	208-342-4681	704-949-2100	314-344-8555	215-295-1900	916-419-7191	360-567-4280	905-565-9217	+44 2980 3266

INCLINE WEDGEGRIP

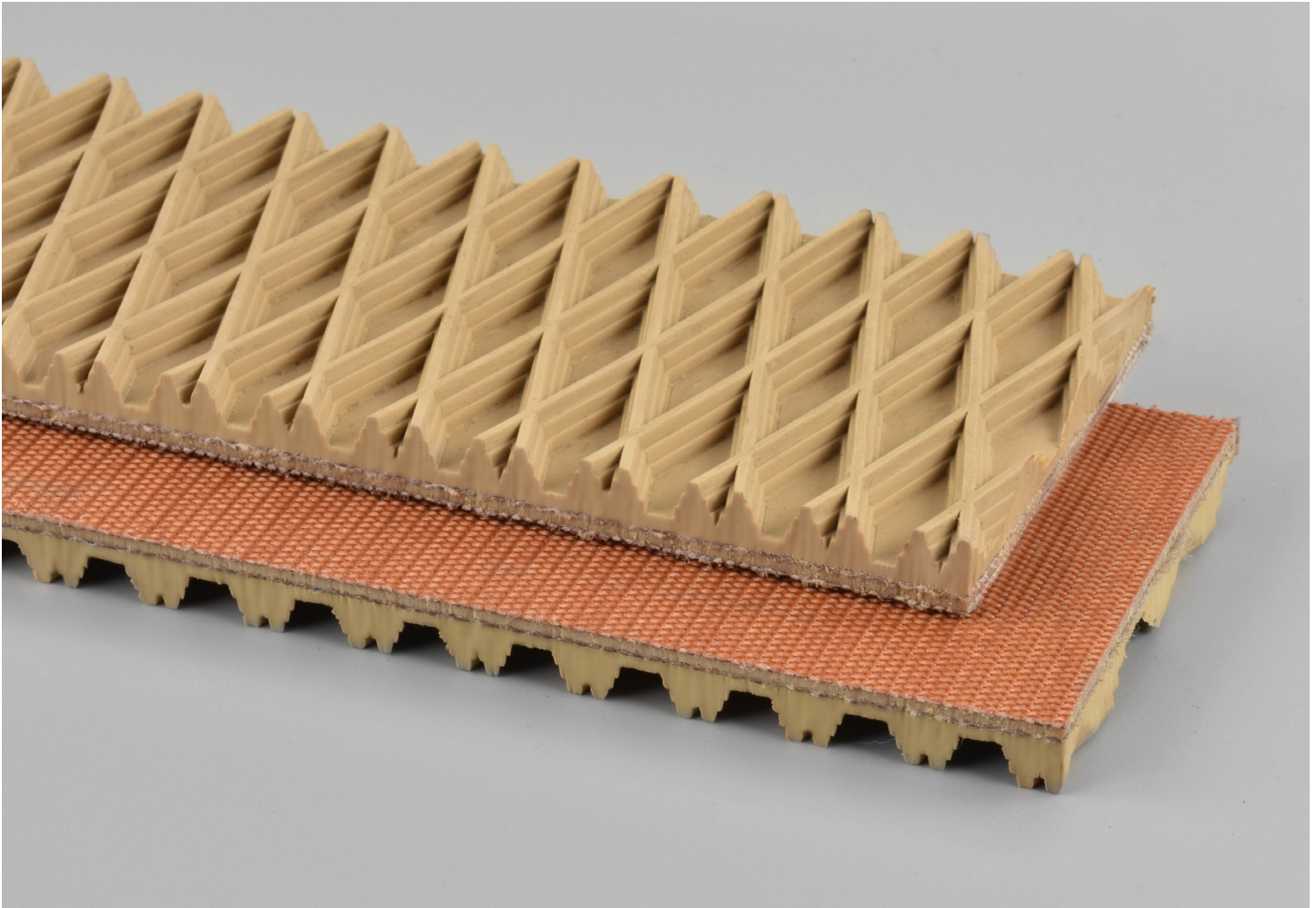
2 PLY 150 PIW TAN WEDGEGRIP X BARE

67a

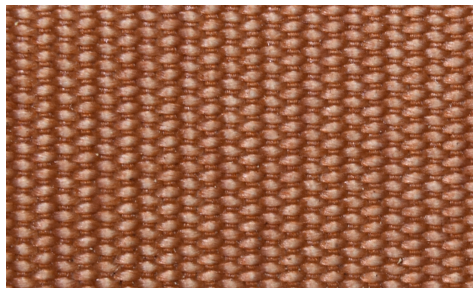
Catalog Number

10612

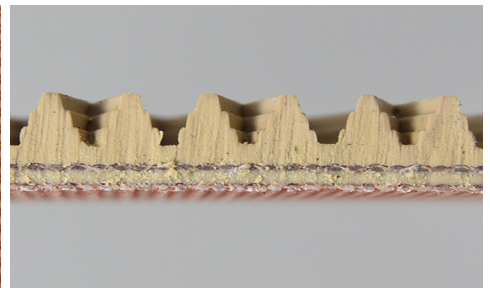
Part Number



Top Cover View



Bottom Cover View



Ply View



BELTSERVICE
CORPORATION

beltservice.com

REV 3/23