

**Catalog # 65**
**Item number: 10664**
**Description:**

3 Ply CP30 Tan Genuine PG Steepgrade x FS

**International Designation:**

N/A

**Pulley Diameter, Minimum**

Minimum Pulley Diameter 2.50 in

**Belt Strength:**

Tension Rating (PIW) 90 PIW

**Construction:**

Compound Top Cover	Tan NR
Color	Tan
Top Cover Thickness (in)	(0.00 mm) 0.00 in
Top Cover Description	Oval shaped Nubs
Compound Bottom Cover	Tan NR
Bottom Cover Thickness (in)	(0.00 mm) 0.00 in
Bottom Cover Description	Friction Surface
Number of Plies	3
Overall Gauge (in)	(7.94 mm) 5/16 in
Unit Weight- lb/PIW	0.1190 lbs/PIW
Carcass Type	Cotton-Polyester
Compound	Tan NR
Temperature Range (°F)- High	250 °F
Temperature Range (°F)- Low	-40 °F

**Splice Instructions:**

Splice Step	Yes
Splice Finger	No

**Other:**

Static Conducting	No
Cross Rigid	No
High Heat	No
Impression Top	Yes
Oil Resistant	No
Fire Resistant	No
FDA Approved	No

**Suggested Fasteners:**

Flexco Plate/Rivet	N/A
Flexco Hinged	N/A
Alligator Staple	#125
Clipper Lace	#1
Alligator Lace	#7

**Special Characteristics:**

The Tan Genuine Pure Gum is softer durometer for the highest inclines. This belt features soft, oval-shaped nubs for gripping packages and products for very steep inclines. The molded projections prevent slip-back, providing a cushioning, pocketing effect for all sizes and shapes of boxes.

\*\*\*\*\*All Values are nominal and subject to change without notice.\*\*\*\*\*

<b>St. Louis, MO</b> 800-727-2358 314-344-8500	<b>Boise, ID</b> 800-423-4469 208-342-4681	<b>Charlotte, NC</b> 800-849-2358 704-949-2100	<b>Grand Prairie, TX</b> 800-727-2358 314-344-8555	<b>Philadelphia, PA</b> 800-777-1314 215-295-1900	<b>Sacramento, CA</b> 800-289-2358 916-419-7191	<b>Vancouver, WA</b> 800-234-2358 360-567-4280	<b>Beltservice Canada</b> 877-210-7423 905-565-9217	<b>Beltservice de Mexico</b> +52 55 53620434 +44 2980 3266
--	--	--	--	---	---	--	---	--

# INCLINE SPECIALTY

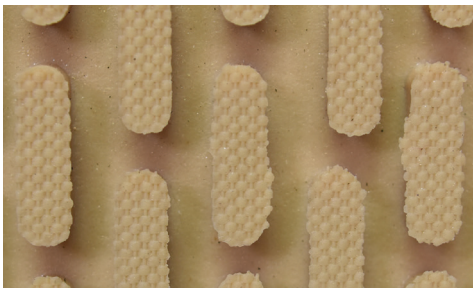
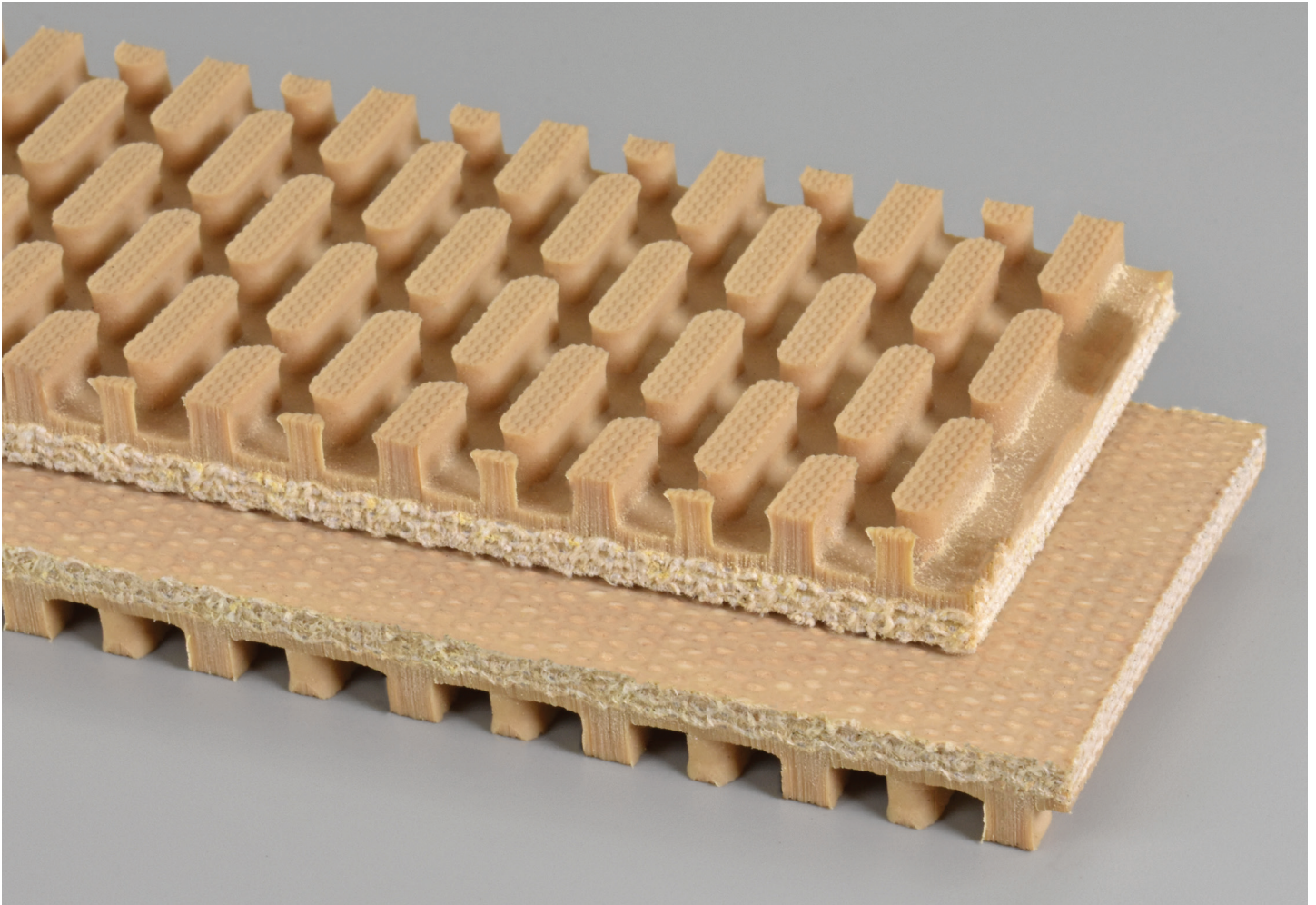
3 PLY CP30 TAN PURE GUM STEEPGRADE X FS

**65**

Catalog Number

**10664**

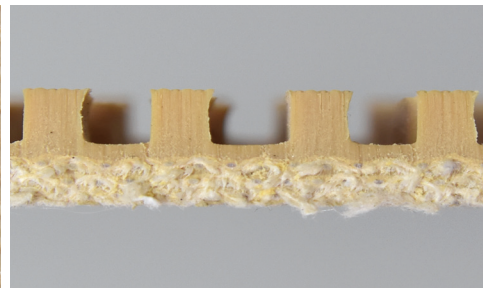
Part Number



Top Cover View



Bottom Cover View



Ply View



**BELTSERVICE**  
CORPORATION

[beltservice.com](http://beltservice.com)

REV 3/23