

Catalog # 64
Item number: 10658
Description:

3 Ply CP30 Black Steepgrade x FS

International Designation:

N/A

Pulley Diameter, Minimum

Minimum Pulley Diameter 3.00 in

Belt Strength:

Tension Rating (PIW) 90 PIW

Construction:

Compound Top Cover	Black SBR
Color	Black
Top Cover Thickness (in)	(0.00 mm) 0.00 in
Top Cover Description	Oval shaped Nubs
Compound Bottom Cover	Black SBR
Bottom Cover Thickness (in)	(0.00 mm) 0.00 in
Bottom Cover Description	Friction Surface
Number of Plies	3
Overall Gauge (in)	(7.94 mm) 5/16 in
Unit Weight- lb/PIW	0.1000 lbs/PIW
Carcass Type	Cotton-Polyester
Compound	Black SBR
Temperature Range (°F)- High	250 °F
Temperature Range (°F)- Low	-40 °F

Splice Instructions:

Splice Step	Yes
Splice Finger	No

Other:

Static Conducting	No
Cross Rigid	No
High Heat	No
Impression Top	Yes
Oil Resistant	No
Fire Resistant	No
FDA Approved	No

Suggested Fasteners:

Flexco Plate/Rivet	N/A
Flexco Hinged	N/A
Alligator Staple	#125
Clipper Lace	#1
Alligator Lace	#7

Special Characteristics:

This belt features soft, oval-shaped nubs for gripping packages and products for very steep inclines. The molded projections prevent slip-back, providing a cushioning, pocketing effect for all sizes and shapes of boxes.

*****All Values are nominal and subject to change without notice.*****

St. Louis, MO 800-727-2358 314-344-8500	Boise, ID 800-423-4469 208-342-4681	Charlotte, NC 800-849-2358 704-949-2100	Grand Prairie, TX 800-727-2358 314-344-8555	Philadelphia, PA 800-777-1314 215-295-1900	Sacramento, CA 800-289-2358 916-419-7191	Vancouver, WA 800-234-2358 360-567-4280	Beltservice Canada 877-210-7423 905-565-9217	Beltservice de Mexico +52 55 53620434 +44 2980 3266
--	--	--	--	---	---	--	---	--

INCLINE SPECIALTY

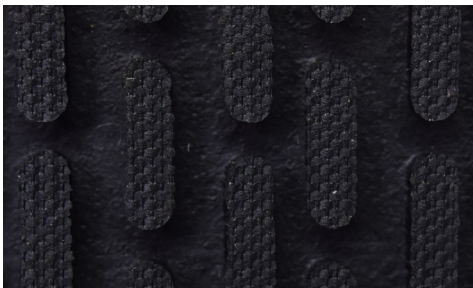
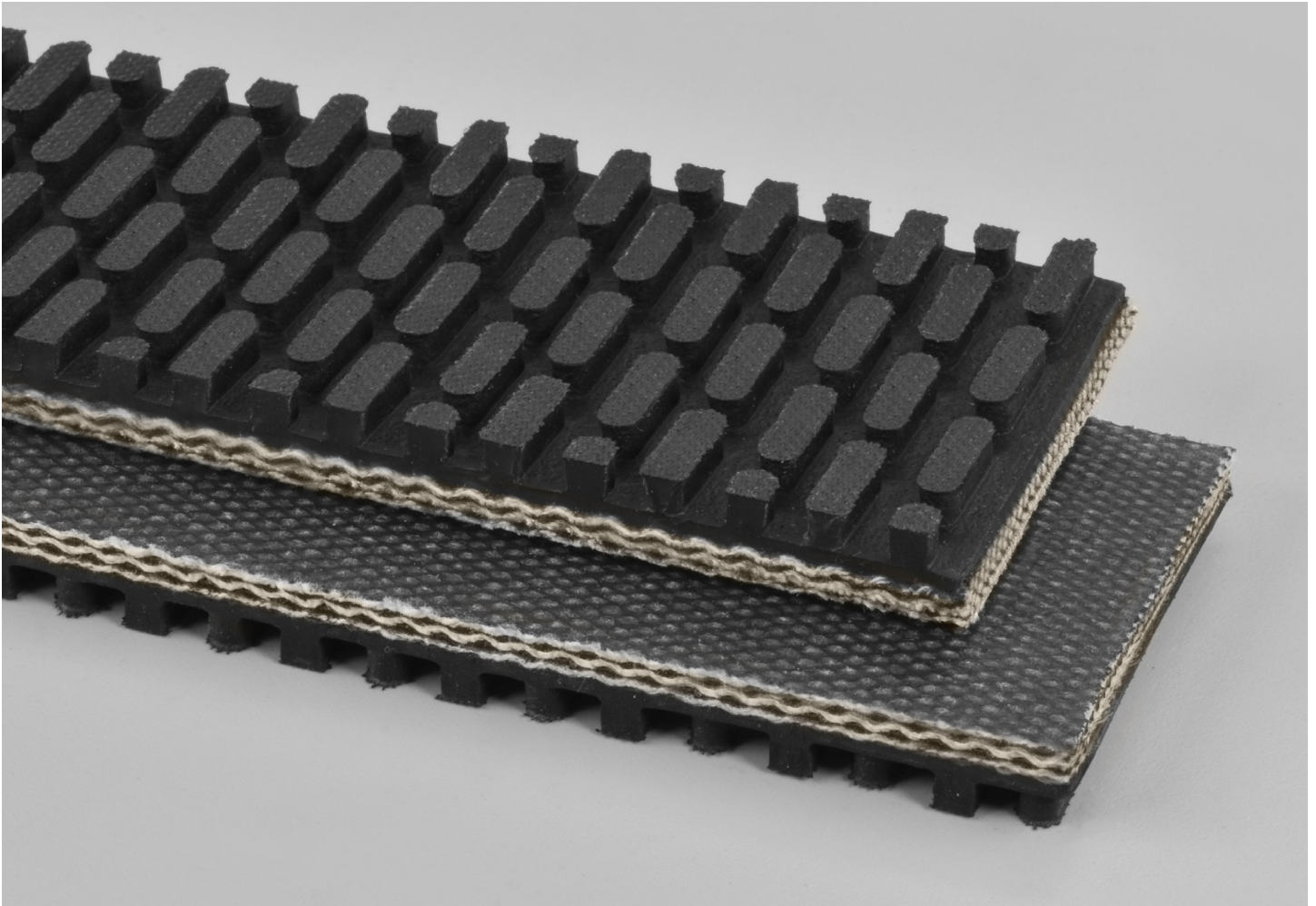
3 PLY CP30 BLACK STEEPGRADE X FS

64

Catalog Number

10658

Part Number



Top Cover View



Bottom Cover View



Ply View



BELTSERVICE
CORPORATION

beltservice.com

REV 3/23