

Catalog # **60**
Item number: **10672**
Description:

3 Ply 135 Brown Nitrile Roughtop x FS

International Designation:

N/A

Pulley Diameter, Minimum

Minimum Pulley Diameter 3.00 in

Belt Strength:

Tension Rating (PIW) 135 PIW

Construction:

Compound Top Cover	Brown Nitrile
Color	Brown
Top Cover Thickness (in)	(0.00 mm) 0.00 in
Top Cover Description	Roughtop
Compound Bottom Cover	Brown Nitrile
Bottom Cover Thickness (in)	(0.00 mm) 0.00 in
Bottom Cover Description	Friction Surface
Number of Plies	3
Overall Gauge (in)	(6.35 mm) 1/4 in
Unit Weight- lb/PIW	0.1000 lbs/PIW
Carcass Type	Polyester
Compound	Brown Nitrile
Temperature Range (°F)- High	250 °F
Temperature Range (°F)- Low	0 °F

Splice Instructions:

Splice Step	Yes
Splice Finger	No

Other:

Static Conducting	No
Cross Rigid	No
High Heat	No
Impression Top	Yes
Oil Resistant	Yes
Fire Resistant	No
FDA Approved	No

Suggested Fasteners:

Flexco Plate/Rivet	N/A
Flexco Hinged	N/A
Alligator Staple	#125
Clipper Lace	#1
Alligator Lace	#1

Special Characteristics:

Nitrile construction resists oil, grease, and chemical exposure. Our specification is made of 135 lb. - rated all polyester for good strength and low stretch, yet is very flexible for small pulleys.

*****All Values are nominal and subject to change without notice.*****

St. Louis, MO	Boise, ID	Charlotte, NC	Grand Prairie, TX	Philadelphia, PA	Sacramento, CA	Vancouver, WA	Beltservice Canada	Beltservice de Mexic
800-727-2358	800-423-4469	800-849-2358	800-727-2358	800-777-1314	800-289-2358	800-234-2358	877-210-7423	+52 55 53620434
314-344-8500	208-342-4681	704-949-2100	314-344-8555	215-295-1900	916-419-7191	360-567-4280	905-565-9217	+44 2980 3266

INCLINE ROUGHTOP

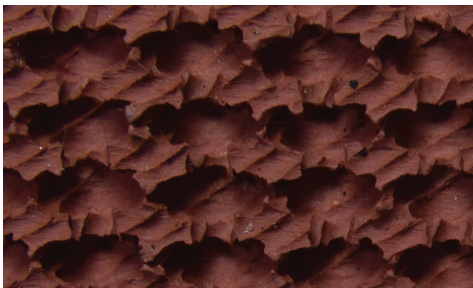
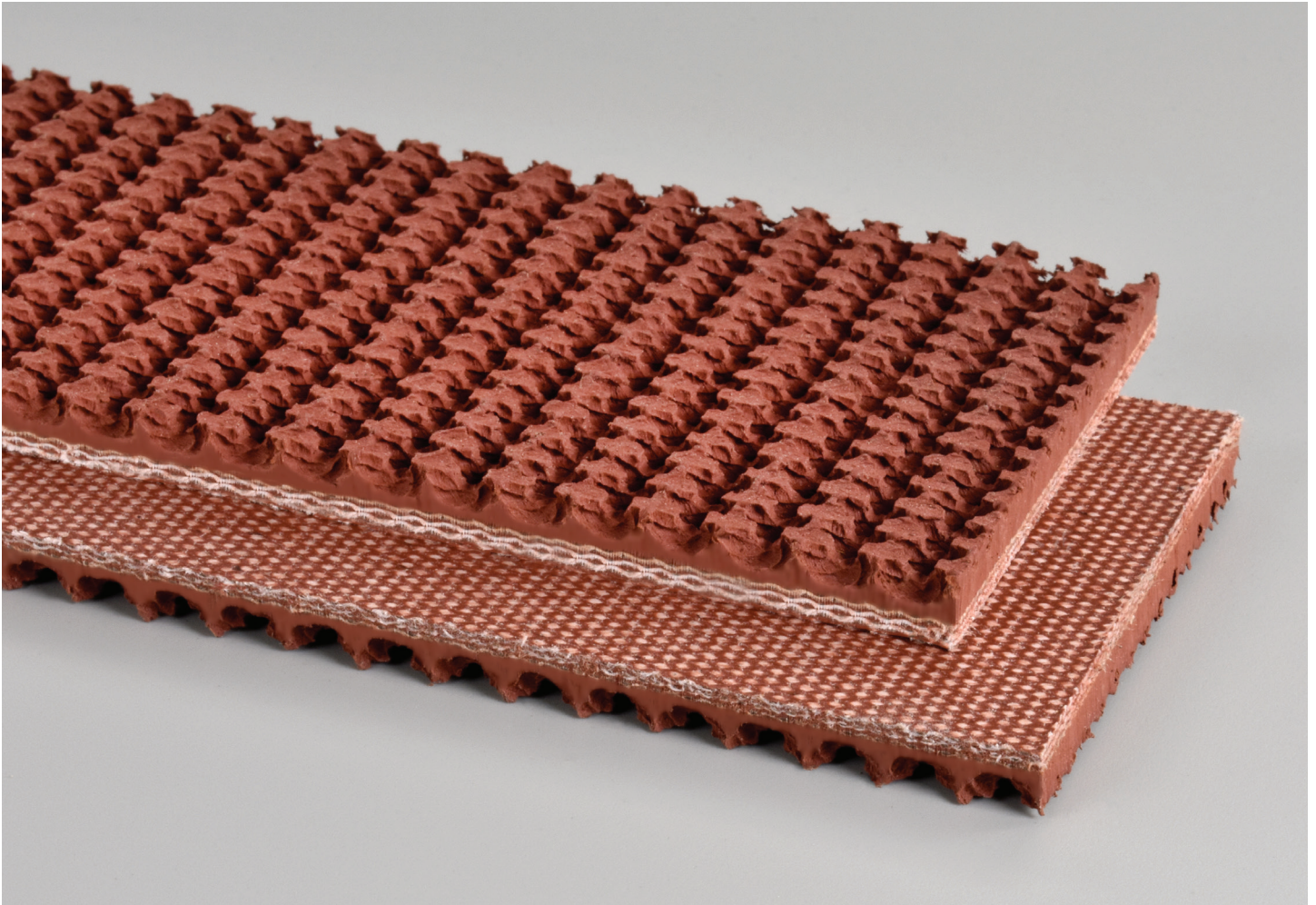
3 PLY 135 PIW BROWN NITRILE ROUGHTOP X FS

60

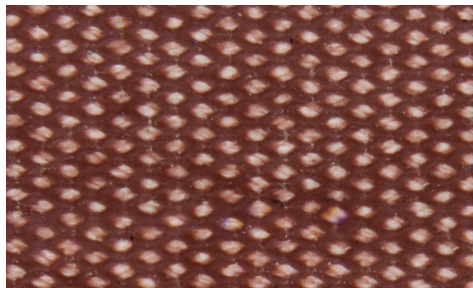
Catalog Number

10672

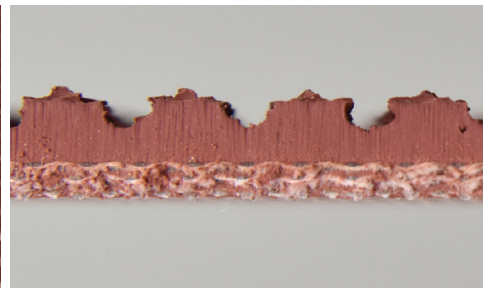
Part Number



Top Cover View



Bottom Cover View



Ply View



BELTSERVICE
CORPORATION

beltservice.com

REV 3/23