

Catalog # 55
Item number: 10610
Description:
 2 Ply 150 Tan Roughtop x Bare
International Designation:
 N/A

Pulley Diameter, Minimum

Minimum Pulley Diameter 2.00 in

Belt Strength:

Tension Rating (PIW) 150 PIW

Construction:

Compound Top Cover	Tan SBR
Color	Tan
Top Cover Thickness (in)	(0.00 mm) 0.00 in
Top Cover Description	Roughtop
Compound Bottom Cover	Bare RFL
Bottom Cover Thickness (in)	(0.00 mm) 0.00 in
Bottom Cover Description	Bare
Number of Plies	2
Overall Gauge (in)	(7.14 mm) 9/32 in
Unit Weight- lb/PIW	0.1000 lbs/PIW
Carcass Type	Polyester
Compound	Tan SBR
Temperature Range (°F)- High	250 °F
Temperature Range (°F)- Low	-40 °F

Splice Instructions:

Splice Step	Yes
Splice Finger	No

Other:

Static Conducting	No
Cross Rigid	No
High Heat	No
Impression Top	Yes
Oil Resistant	No
Fire Resistant	No
FDA Approved	No

Suggested Fasteners:

Flexco Plate/Rivet	N/A
Flexco Hinged	N/A
Alligator Staple	#125
Clipper Lace	#1
Alligator Lace	#1

Special Characteristics:

The Tan roughtop is non-markings and is constructed of two plies of high-strength, all-synthetic polyester fabrics. Very flexible, low stretch and moisture resistant incline/decline belt.

*****All Values are nominal and subject to change without notice.*****

St. Louis, MO	Boise, ID	Charlotte, NC	Grand Prairie, TX	Philadelphia, PA	Sacramento, CA	Vancouver, WA	Beltservice Canada	Beltservice de Mexic
800-727-2358	800-423-4469	800-849-2358	800-727-2358	800-777-1314	800-289-2358	800-234-2358	877-210-7423	+52 55 53620434
314-344-8500	208-342-4681	704-949-2100	314-344-8555	215-295-1900	916-419-7191	360-567-4280	905-565-9217	+44 2980 3266

INCLINE ROUGHTOP

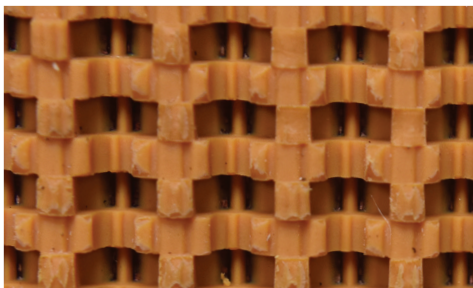
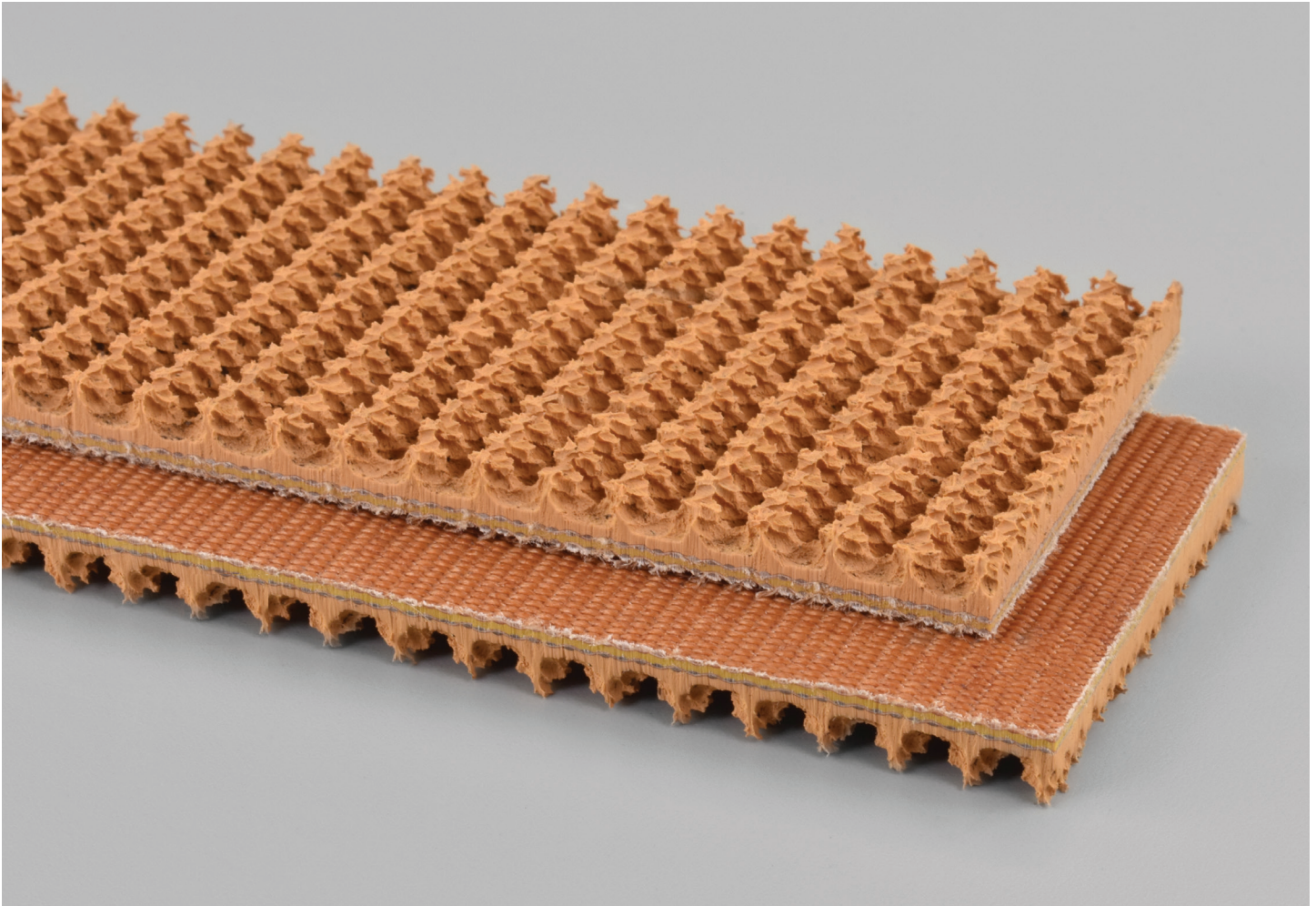
2 PLY 150 PIW TAN ROUGHTOP X BARE

55

Catalog Number

10610

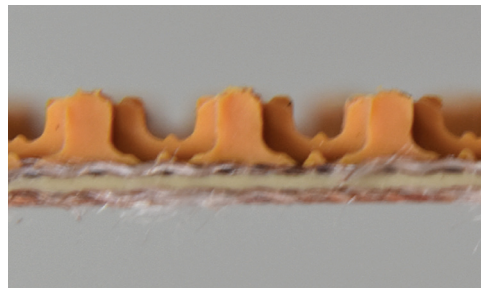
Part Number



Top Cover View



Bottom Cover View



Ply View



BELTSERVICE
CORPORATION

beltservice.com

REV 3/23