

Catalog # **54**
Item number: **10602**
Description:
 2 Ply 150 Black Roughtop x Bare
International Designation:
 N/A

Pulley Diameter, Minimum

Minimum Pulley Diameter 2.00 in

Belt Strength:

Tension Rating (PIW) 150 PIW

Construction:

Compound Top Cover	Black SBR
Color	Black
Top Cover Thickness (in)	(0.00 mm) 0.00 in
Top Cover Description	Roughtop
Compound Bottom Cover	Bare RFL
Bottom Cover Thickness (in)	(0.00 mm) 0.00 in
Bottom Cover Description	Bare
Number of Plies	2
Overall Gauge (in)	(7.14 mm) 9/32 in
Unit Weight- lb/PIW	0.1000 lbs/PIW
Carcass Type	Polyester
Compound	Black SBR
Temperature Range (°F)- High	250 °F
Temperature Range (°F)- Low	-40 °F

Splice Instructions:

Splice Step	Yes
Splice Finger	No

Other:

Static Conducting	No
Cross Rigid	No
High Heat	No
Impression Top	Yes
Oil Resistant	No
Fire Resistant	No
FDA Approved	No

Suggested Fasteners:

Flexco Plate/Rivet	N/A
Flexco Hinged	N/A
Alligator Staple	#125
Clipper Lace	#1
Alligator Lace	#1

Special Characteristics:

Construction is two plies of high-strength, all-synthetic polyester fabrics. Very flexible, low stretch and moisture resistant incline/decline belt.

*****All Values are nominal and subject to change without notice.*****

St. Louis, MO 800-727-2358 314-344-8500	Boise, ID 800-423-4469 208-342-4681	Charlotte, NC 800-849-2358 704-949-2100	Grand Prairie, TX 800-727-2358 314-344-8555	Philadelphia, PA 800-777-1314 215-295-1900	Sacramento, CA 800-289-2358 916-419-7191	Vancouver, WA 800-234-2358 360-567-4280	Beltservice Canada 877-210-7423 905-565-9217	Beltservice de Mexico +52 55 53620434 +44 2980 3266
--	--	--	--	---	---	--	---	--

INCLINE ROUGHTOP

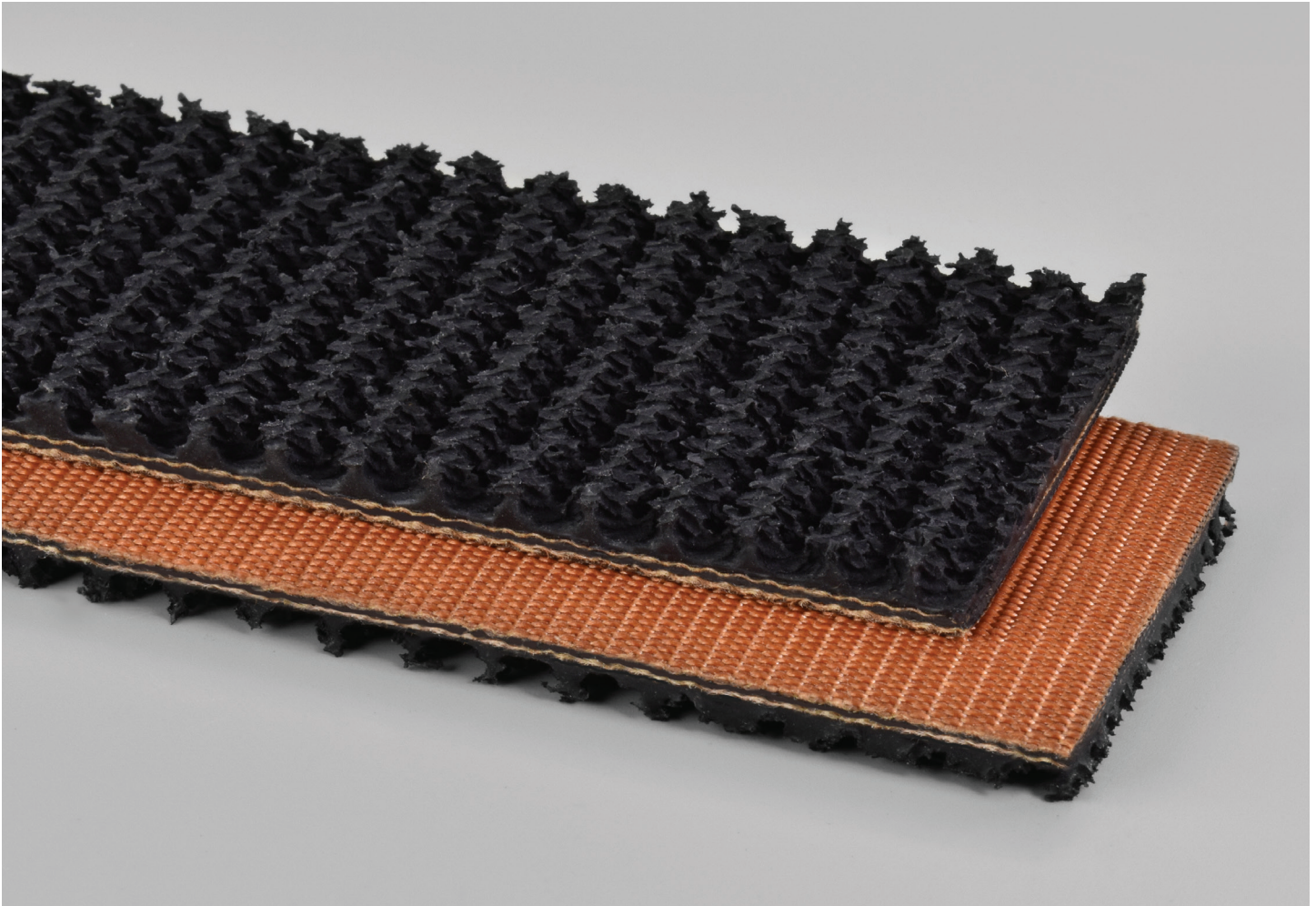
2 PLY 150 PIW BLACK ROUGHTOP X BARE

54

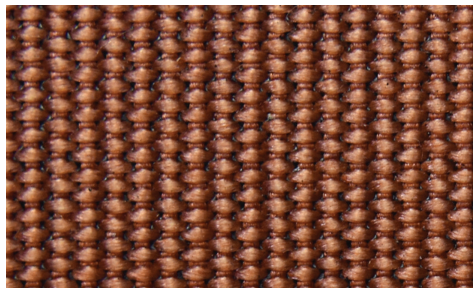
Catalog Number

10602

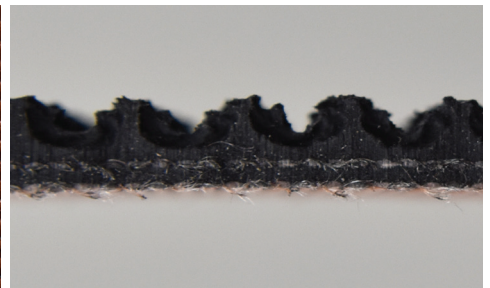
Part Number



Top Cover View



Bottom Cover View



Ply View



BELTSERVICE
CORPORATION

beltservice.com

REV 3/23