

Catalog # **46c**
Item number: **10582**
Description:

3 Ply HSW w/ 1/32 White Smooth Silicone x FS

International Designation:

N/A

Pulley Diameter, Minimum

Minimum Pulley Diameter 3.00 in

Belt Strength:

Tension Rating (PIW) 90 PIW

Construction:

Compound Top Cover White Silicone

Color White

Top Cover Thickness (in) (0.79 mm) 1/32 in

Top Cover Description Silicone

Compound Bottom Cover Black SBR

Bottom Cover Thickness (in) (0.00 mm) 0.00 in

Bottom Cover Description Friction Surface

Number of Plies 3

Overall Gauge (in) (3.97 mm) 5/32 in

Unit Weight- lb/PIW 0.0750 lbs/PIW

Carcass Type Cotton-Polyester

Compound Black SBR

Temperature Range (°F)- High 500 °F

Temperature Range (°F)- Low -100 °F

Splice Instructions:

Splice Step Yes

Splice Finger No

Other:

Static Conducting No

Cross Rigid No

High Heat Yes

Impression Top No

Oil Resistant No

Fire Resistant No

FDA Approved No

Suggested Fasteners:

Flexco Plate/Rivet N/A

Flexco Hinged N/A

Alligator Staple #125

Clipper Lace #3

Alligator Lace #25

Special Characteristics:

Specially designed for applications requiring release of wet, sticky, or warm products like uncured rubber and PVC. These belts are used primarily in the tire and rubber industry. Cover surface rated for up to 500 Degree Material - Carcass rated at 250 Degrees. *DO NOT USE IN OVEN APPLICATIONS* Coatings available in different colors and thicknesses. Other base belts available, priced on application.

*****All Values are nominal and subject to change without notice.*****

St. Louis, MO	Boise, ID	Charlotte, NC	Grand Prairie, TX	Philadelphia, PA	Sacramento, CA	Vancouver, WA	Beltservice Canada	Beltservice de Mexico
800-727-2358	800-423-4469	800-849-2358	800-727-2358	800-777-1314	800-289-2358	800-234-2358	877-210-7423	+52 55 53620434
314-344-8500	208-342-4681	704-949-2100	314-344-8555	215-295-1900	916-419-7191	360-567-4280	905-565-9217	+44 2980 3266

HOT STOCK & WATER

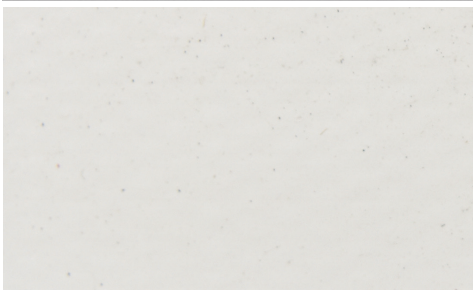
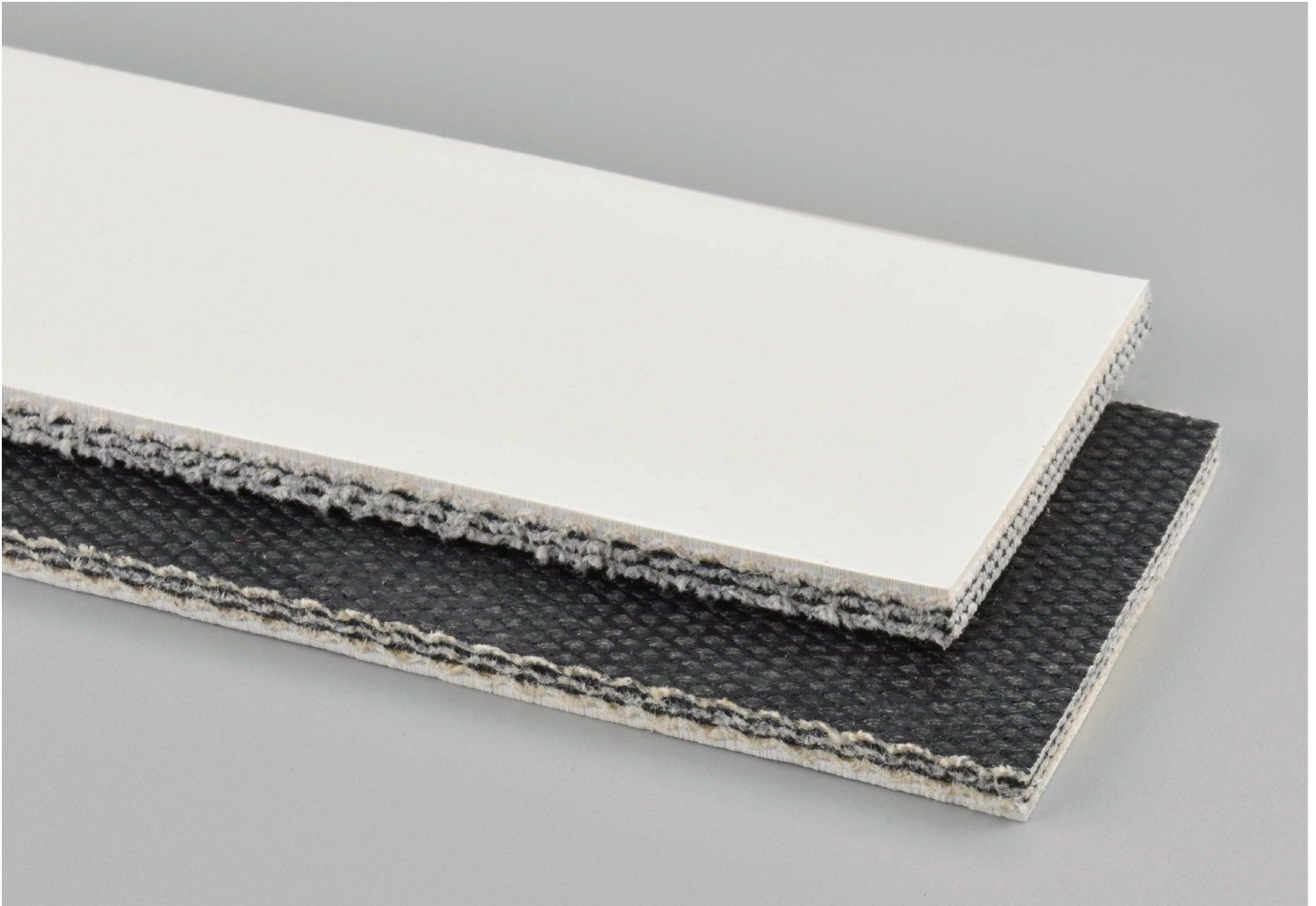
3 PLY HSW W/ 1/32 WHITE SMOOTH SILICONE X FS

46c

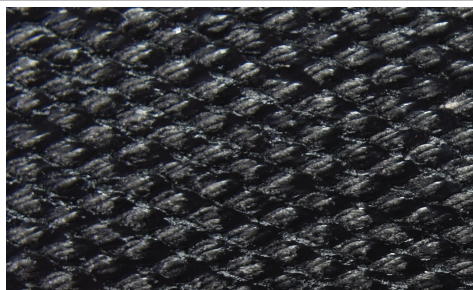
Catalog Number

10582

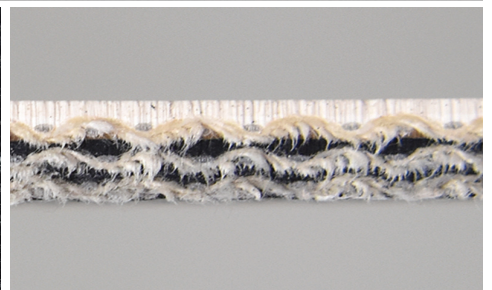
Part Number



Top Cover View



Bottom Cover View



Ply View