

Catalog # **40**
Item number: **10884**
Description:
 4 Ply CP30 Tan FS x FS
International Designation:
 N/A

Pulley Diameter, Minimum

Minimum Pulley Diameter 3.00 in

Belt Strength:

Tension Rating (PIW) 120 PIW

Construction:

Compound Top Cover	Tan SBR
Color	Tan
Top Cover Thickness (in)	(0.00 mm) 0.00 in
Top Cover Description	Friction Surface
Compound Bottom Cover	Tan SBR
Bottom Cover Thickness (in)	(0.00 mm) 0.00 in
Bottom Cover Description	Friction Surface
Number of Plies	4
Overall Gauge (in)	(4.76 mm) 3/16 in
Unit Weight- lb/PIW	0.0940 lbs/PIW
Carcass Type	Cotton-Polyester
Compound	Tan SBR
Temperature Range (°F)- High	250 °F
Temperature Range (°F)- Low	-40 °F

Splice Instructions:

Splice Step	Yes
Splice Finger	No

Other:

Static Conducting	No
Cross Rigid	No
High Heat	No
Impression Top	No
Oil Resistant	No
Fire Resistant	No
FDA Approved	No

Suggested Fasteners:

Flexco Plate/Rivet	N/A
Flexco Hinged	N/A
Alligator Staple	#187
Clipper Lace	#3
Alligator Lace	#25

Special Characteristics:

Commonly known as friction surface and/or transmission belting, this belt has long been a standard for a wide variety of conveyor applications for both slider bed and roller applications. Construction is cotton/polyester fabric plies bonded with resilient rubber compounding, either side to pulley, vulcanized endless or mechanical splice.

*****All Values are nominal and subject to change without notice.*****

St. Louis, MO	Boise, ID	Charlotte, NC	Grand Prairie, TX	Philadelphia, PA	Sacramento, CA	Vancouver, WA	Beltservice Canada	Beltservice de Mexico
800-727-2358	800-423-4469	800-849-2358	800-727-2358	800-777-1314	800-289-2358	800-234-2358	877-210-7423	+52 55 53620434
314-344-8500	208-342-4681	704-949-2100	314-344-8555	215-295-1900	916-419-7191	360-567-4280	905-565-9217	+44 2980 3266

TRANSMISSION

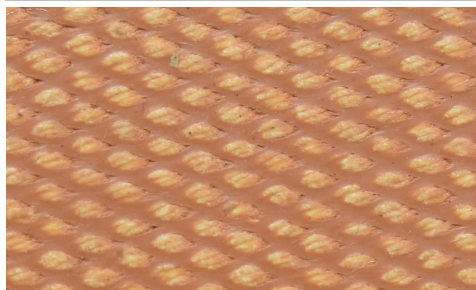
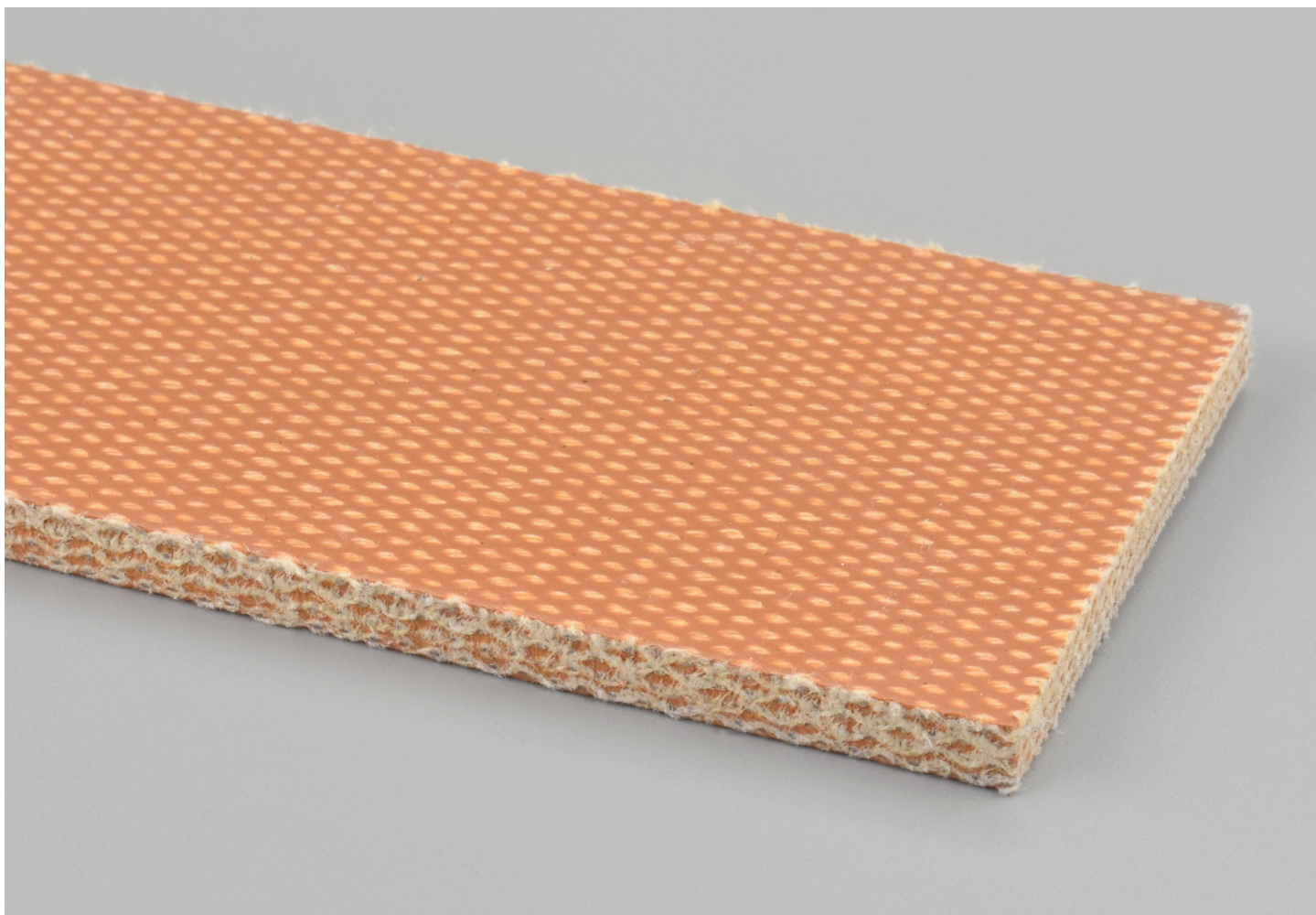
4 PLY CP30 TAN FS X FS

40

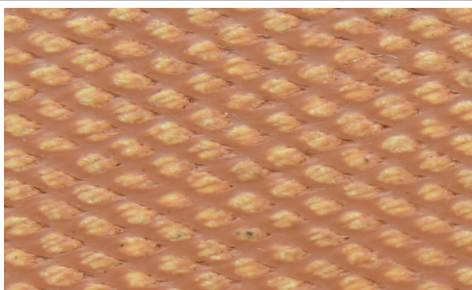
Catalog Number

10884

Part Number



Top Cover View



Bottom Cover View



Ply View



BELTSERVICE
CORPORATION

beltservice.com

REV 3/23