

Catalog # **32**
Item number: **10704**
Description:
 4 Ply Tan Sliptop
International Designation:
 N/A

Pulley Diameter, Minimum

Minimum Pulley Diameter 2.00 in

Belt Strength:

Tension Rating (PIW) 48 PIW

Construction:

Compound Top Cover	Hard-Woven Nylon
Color	Tan
Top Cover Thickness (in)	(0.00 mm) 0.00 in
Top Cover Description	Bare
Compound Bottom Cover	Tan Nitrile
Bottom Cover Thickness (in)	(0.00 mm) 0.00 in
Bottom Cover Description	Friction Surface
Number of Plies	4
Overall Gauge (in)	(3.18 mm) 1/8 in
Unit Weight- lb/PIW	0.0700 lbs/PIW
Carcass Type	Polyester
Compound	Tan Nitrile
Temperature Range (°F)- High	250 °F
Temperature Range (°F)- Low	-20 °F

Splice Instructions:

Splice Step	Yes
Splice Finger	No

Other:

Static Conducting	No
Cross Rigid	No
High Heat	No
Impression Top	No
Oil Resistant	No
Fire Resistant	No
FDA Approved	No

Suggested Fasteners:

Flexco Plate/Rivet	N/A
Flexco Hinged	N/A
Alligator Staple	#62
Clipper Lace	#1
Alligator Lace	#15

Special Characteristics:

The hard-woven, abrasive-resistant bare nylon top surface is virtually frictionless and therefore ideal for "stall" operations or accumulating applications where the product must stop while the belt continues to move. Commonly used with automatic packaging machinery and with gates or diverter arms.

*****All Values are nominal and subject to change without notice.*****

St. Louis, MO	Boise, ID	Charlotte, NC	Grand Prairie, TX	Philadelphia, PA	Sacramento, CA	Vancouver, WA	Beltservice Canada	Beltservice de Mexico
800-727-2358	800-423-4469	800-849-2358	800-727-2358	800-777-1314	800-289-2358	800-234-2358	877-210-7423	+52 55 53620434
314-344-8500	208-342-4681	704-949-2100	314-344-8555	215-295-1900	916-419-7191	360-567-4280	905-565-9217	+44 2980 3266

LIGHT DUTY

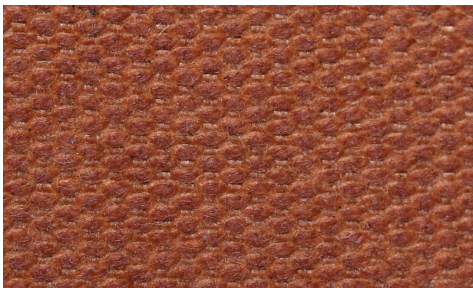
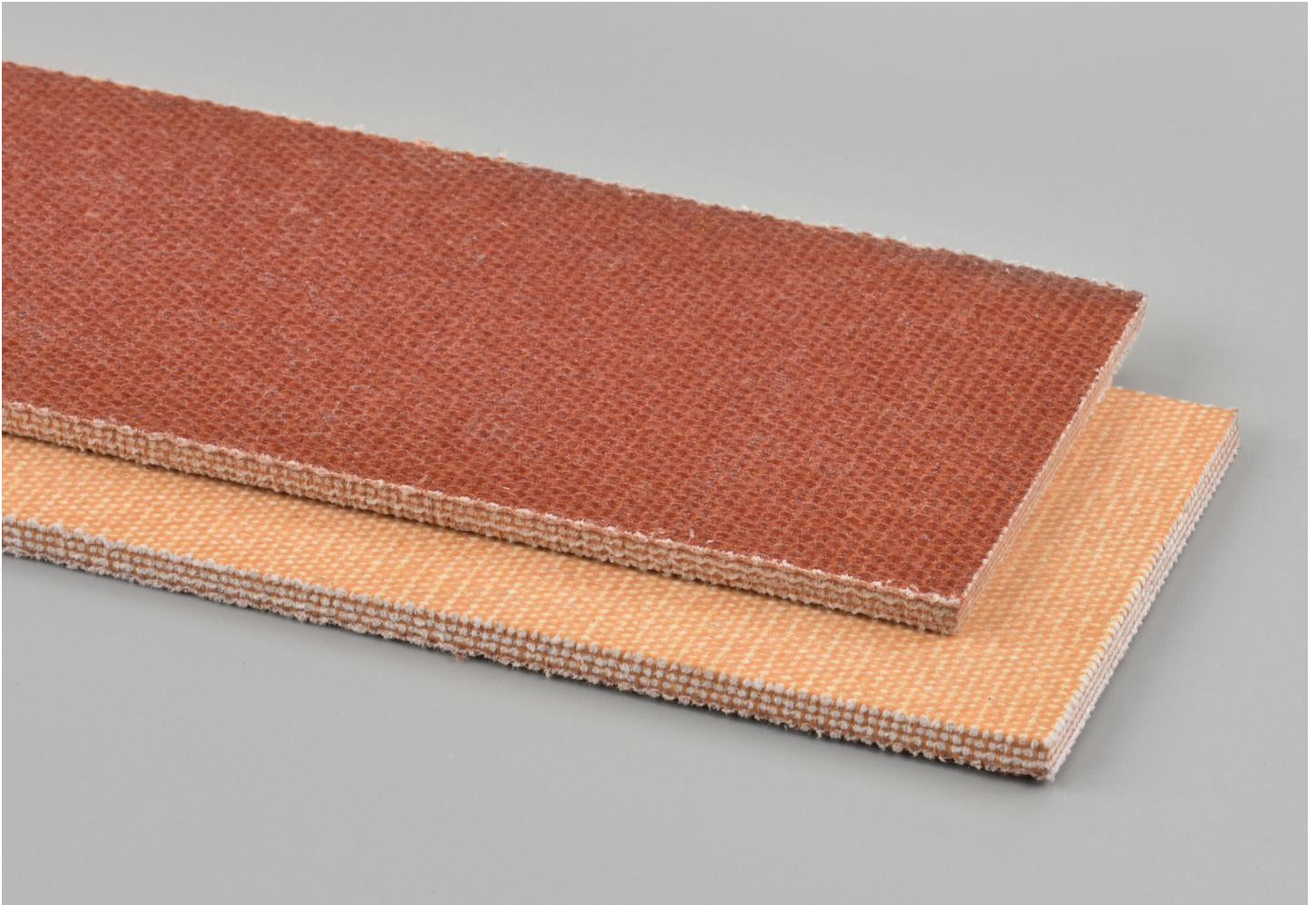
4 PLY TAN SLIPTOP

32

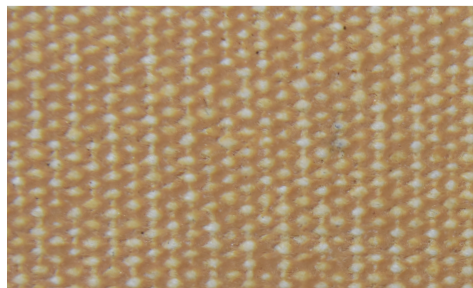
Catalog Number

10704

Part Number



Top Cover View



Bottom Cover View



Ply View