

**Catalog #**                    **29**  
**Item number:**                **10686**  
**Description:**  
 2 Ply CP 30 Black Nitrile COS  
**International Designation:**  
 N/A

**Pulley Diameter, Minimum**

Minimum Pulley Diameter                    2.00 in

**Belt Strength:**

Tension Rating (PIW)                    60 PIW

**Construction:**

Compound Top Cover	Black Nitrile
Color	Black
Top Cover Thickness (in)	(1.19 mm) 3/64 in
Top Cover Description	Smooth
Compound Bottom Cover	Black Nitrile
Bottom Cover Thickness (in)	(0.00 mm) 0.00 in
Bottom Cover Description	Friction Surface
Number of Plies	2
Overall Gauge (in)	(2.38 mm) 3/32 in
Unit Weight- lb/PIW	0.0560 lbs/PIW
Carcass Type	Cotton-Polyester
Compound	Black Nitrile
Temperature Range (°F)- High	250 °F
Temperature Range (°F)- Low	0 °F

**Splice Instructions:**

Splice Step	Yes
Splice Finger	No

**Other:**

Static Conducting	No
Cross Rigid	No
High Heat	No
Impression Top	No
Oil Resistant	Yes
Fire Resistant	No
FDA Approved	Yes

**Suggested Fasteners:**

Flexco Plate/Rivet	N/A
Flexco Hinged	N/A
Alligator Staple	#62
Clipper Lace	#1A
Alligator Lace	#7

**Special Characteristics:**

All-purpose conveyor belt with smooth nitrile top covers for assembly line, packaging and a wide variety of industrial uses. The 2 Ply is made with a cotton-polyester blend carcass. This belt has superior oil, grease and animal fat resistance and good heat capability. FDA approved.

\*\*\*\*\*All Values are nominal and subject to change without notice.\*\*\*\*\*

<b>St. Louis, MO</b>	<b>Boise, ID</b>	<b>Charlotte, NC</b>	<b>Grand Prairie, TX</b>	<b>Philadelphia, PA</b>	<b>Sacramento, CA</b>	<b>Vancouver, WA</b>	<b>Beltservice Canada</b>	<b>Beltservice de Mexico</b>
800-727-2358	800-423-4469	800-849-2358	800-727-2358	800-777-1314	800-289-2358	800-234-2358	877-210-7423	+52 55 53620434
314-344-8500	208-342-4681	704-949-2100	314-344-8555	215-295-1900	916-419-7191	360-567-4280	905-565-9217	+44 2980 3266

# LIGHT DUTY

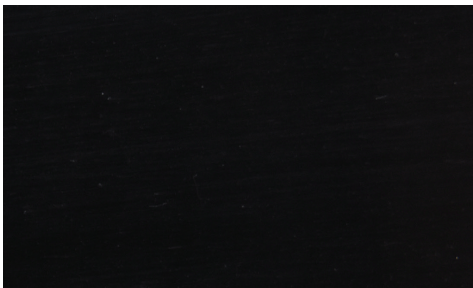
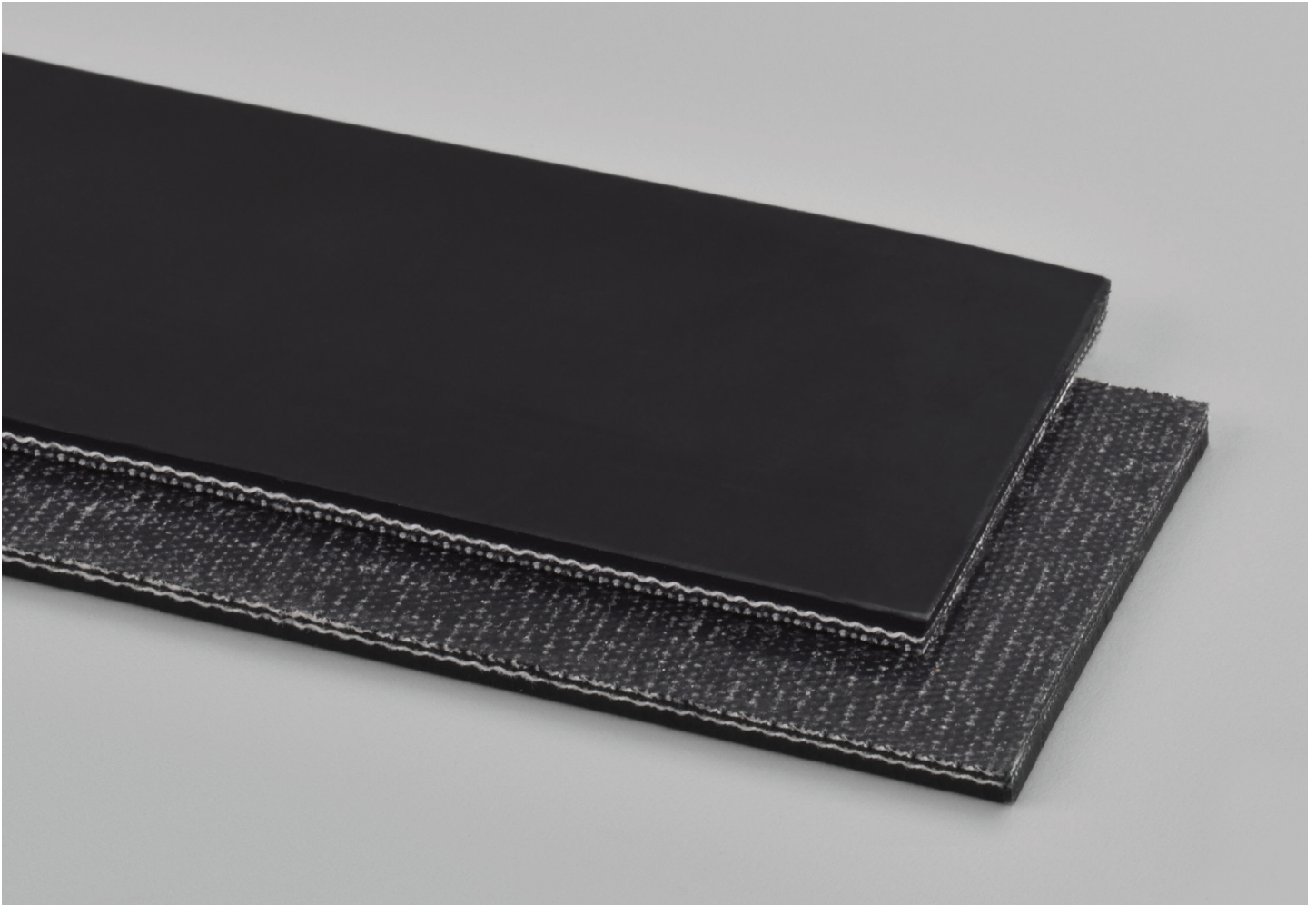
2 PLY CP30 BLACK NITRILE COS

29

Catalog Number

10686

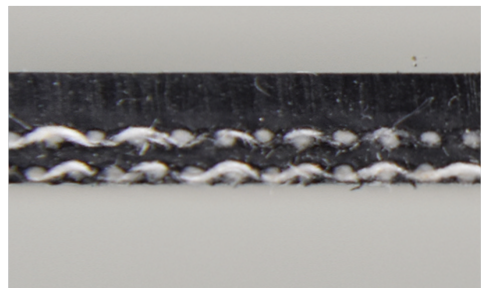
Part Number



Top Cover View



Bottom Cover View



Ply View