

Catalog # **12**
Item number: **10400**
Description:

3 Ply Poly 90 White Nitrile Pebbletop

International Designation:

N/A

Pulley Diameter, Minimum

Minimum Pulley Diameter 2.50 in

Belt Strength:

Tension Rating (PIW) 90 PIW

Construction:

Compound Top Cover White Nitrile

Color White

Top Cover Thickness (in) (0.79 mm) 1/32 in

Top Cover Description Pebbletop

Compound Bottom Cover White Nitrile

Bottom Cover Thickness (in) (0.00 mm) 0.00 in

Bottom Cover Description Friction Surface

Number of Plies 3

Overall Gauge (in) (3.18 mm) 1/8 in

Unit Weight- lb/PIW 0.0620 lbs/PIW

Carcass Type Polyester

Compound White Nitrile

Temperature Range (°F)- High 250 °F

Temperature Range (°F)- Low 0 °F

Splice Instructions:

Splice Step Yes

Splice Finger No

Other:

Static Conducting No

Cross Rigid No

High Heat No

Impression Top Yes

Oil Resistant Yes

Fire Resistant No

FDA Approved Yes

Suggested Fasteners:

Flexco Plate/Rivet N/A

Flexco Hinged N/A

Alligator Staple #62

Clipper Lace #1

Alligator Lace #15

Special Characteristics:

The cover features a textured pattern (known as Tyler Wire Impression) that is capable of high traction on moderate inclines. Suitable for conveying produce, bakery goods, packages and small parts. Oil and grease resistant, non-marking. FDA accepted.

*****All Values are nominal and subject to change without notice.*****

St. Louis, MO	Boise, ID	Charlotte, NC	Grand Prairie, TX	Philadelphia, PA	Sacramento, CA	Vancouver, WA	Beltservice Canada	Beltservice de Mexico
800-727-2358	800-423-4469	800-849-2358	800-727-2358	800-777-1314	800-289-2358	800-234-2358	877-210-7423	+52 55 53620434
314-344-8500	208-342-4681	704-949-2100	314-344-8555	215-295-1900	916-419-7191	360-567-4280	905-565-9217	+44 2980 3266

FOOD BELTS

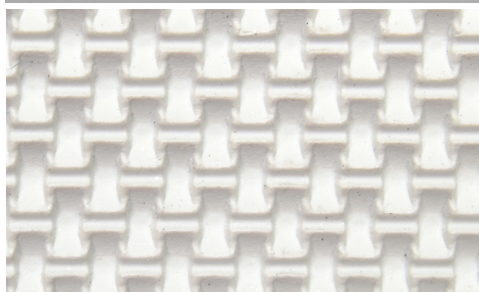
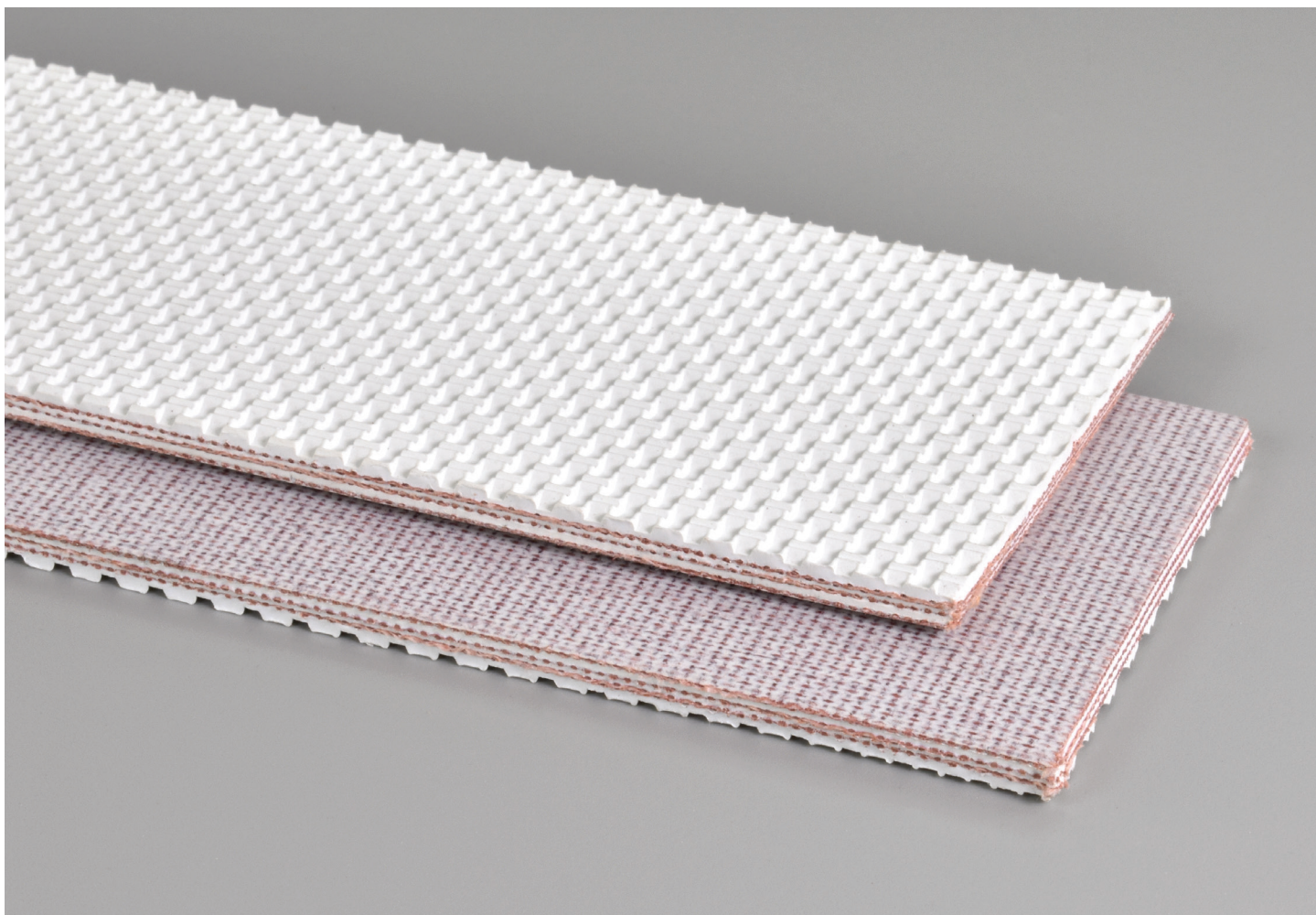
3 PLY POLY 90 WHITE NITRILE PEBBLETOP

12

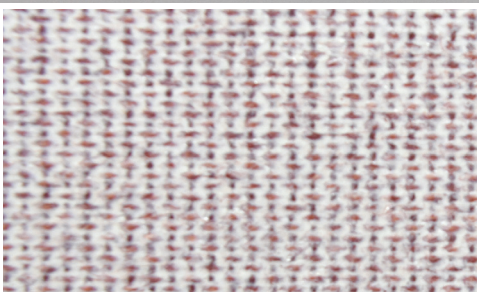
Catalog Number

10400

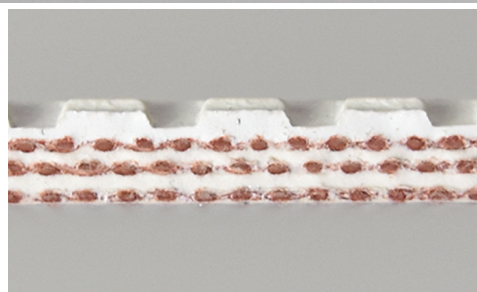
Part Number



Top Cover View



Bottom Cover View



Ply View



BELTSERVICE
CORPORATION

beltservice.com

REV 3/23