

Catalog #
9
Item number:
10401
Description:

3 Ply Poly 105 White Butyl FDA COS

International Designation:

N/A

Pulley Diameter, Minimum

Minimum Pulley Diameter

1.50 in

Belt Strength:

Tension Rating (PIW)

105 PIW

Construction:

Compound Top Cover White Butyl

Color White

Top Cover Thickness (in) (0.79 mm) 1/32 in

Top Cover Description Smooth

Compound Bottom Cover White Butyl

Bottom Cover Thickness (in) (0.00 mm) 0.00 in

Bottom Cover Description Friction Surface

Number of Plies 3

Overall Gauge (in) (2.38 mm) 3/32 in

Unit Weight- lb/PIW 0.0560 lbs/PIW

Carcass Type Polyester

Compound White Butyl

Temperature Range (°F)- High 300 °F

Temperature Range (°F)- Low -65 °F

Splice Instructions:

Splice Step

Yes

Splice Finger

No

Other:

Static Conducting

No

Cross Rigid

No

High Heat

Yes

Impression Top

No

Oil Resistant

No

Fire Resistant

No

FDA Approved

Yes

Suggested Fasteners:

Flexco Plate/Rivet

N/A

Flexco Hinged

N/A

Alligator Staple

#62

Clipper Lace

#1A

Alligator Lace

#7

Special Characteristics:

A specification designed for extreme temperature applications from -65 to 300 degrees F. Minimum pulley diameter for cold applications is 4" and 1-1/2" for high heat applications. Recommended for high-heat uses such as heat sealing machines and heat (shrink) tunnels; also cold rooms and freezers. Allow 1% shrinkage in the belt length when operated at temperatures over 275 degrees F. Belt is FDA accepted.

*****All Values are nominal and subject to change without notice.*****

St. Louis, MO	Boise, ID	Charlotte, NC	Grand Prairie, TX	Philadelphia, PA	Sacramento, CA	Vancouver, WA	Beltservice Canada	Beltservice de Mexico
800-727-2358	800-423-4469	800-849-2358	800-727-2358	800-777-1314	800-289-2358	800-234-2358	877-210-7423	+52 55 53620434
314-344-8500	208-342-4681	704-949-2100	314-344-8555	215-295-1900	916-419-7191	360-567-4280	905-565-9217	+44 2980 3266

FOOD BELTS

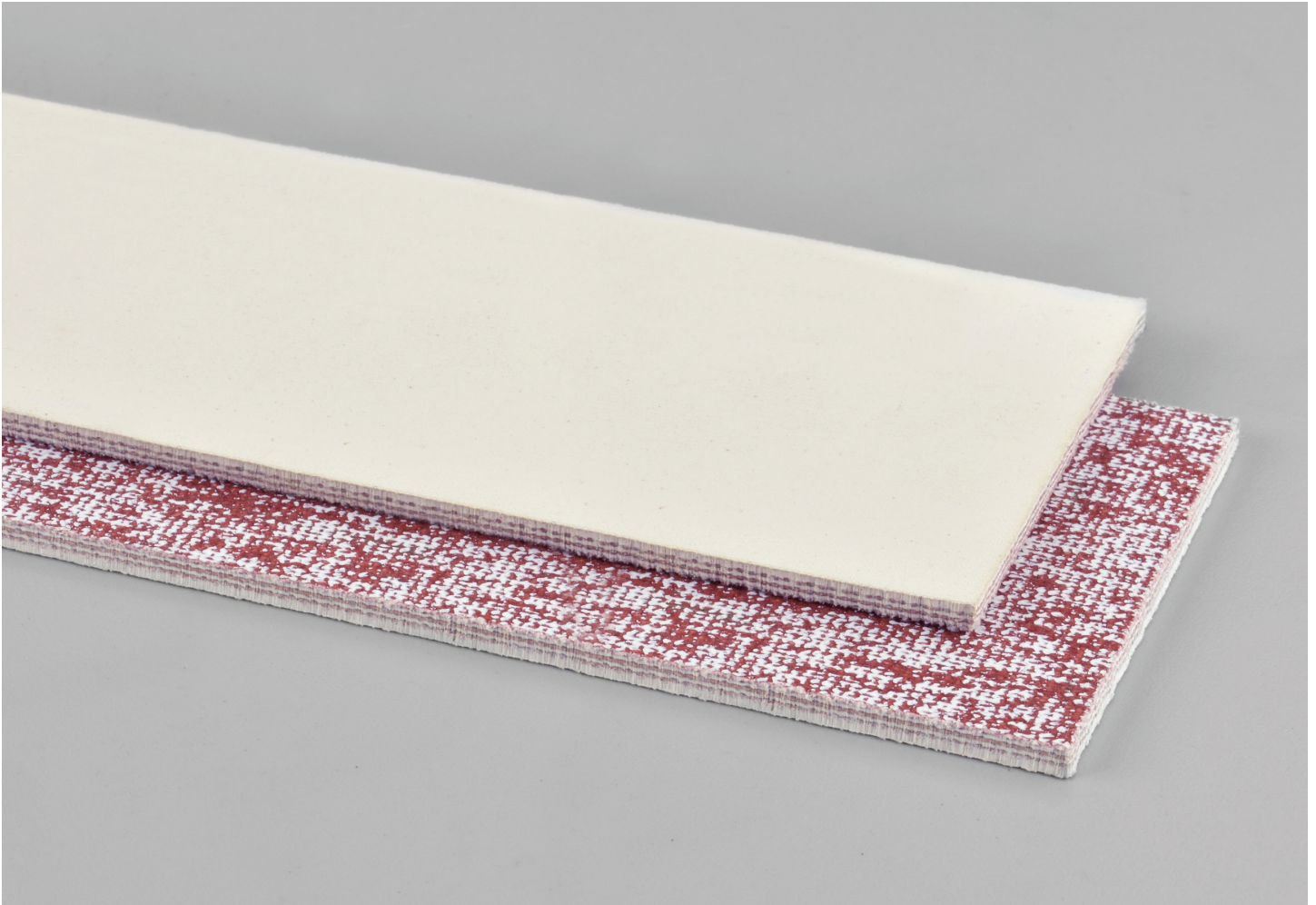
3 PLY POLY 105 WHITE BUTYL COS

9

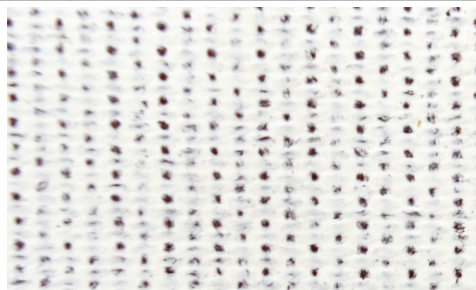
Catalog Number

10401

Part Number



Top Cover View



Bottom Cover View



Ply View



BELTSERVICE
CORPORATION

beltservice.com

REV 3/23