

Catalog # **7**
Item number: **10385**
Description:
 2 Ply Poly 100 White Nitrile FDA COS
International Designation:
 N/A

Pulley Diameter, Minimum

Minimum Pulley Diameter 2.00 in

Belt Strength:

Tension Rating (PIW) 100 PIW

Construction:

Compound Top Cover	White Nitrile
Color	White
Top Cover Thickness (in)	(1.19 mm) 3/64 in
Top Cover Description	Smooth
Compound Bottom Cover	White Nitrile
Bottom Cover Thickness (in)	(0.00 mm) 0.00 in
Bottom Cover Description	Friction Surface
Number of Plies	2
Overall Gauge (in)	(2.78 mm) 7/64 in
Unit Weight- lb/PIW	0.0620 lbs/PIW
Carcass Type	RFL Polyester
Compound	White Nitrile
Temperature Range (°F)- High	250 °F
Temperature Range (°F)- Low	0 °F

Splice Instructions:

Splice Step	Yes
Splice Finger	No

Other:

Static Conducting	No
Cross Rigid	No
High Heat	No
Impression Top	No
Oil Resistant	Yes
Fire Resistant	No
FDA Approved	Yes

Suggested Fasteners:

Flexco Plate/Rivet	N/A
Flexco Hinged	N/A
Alligator Staple	N/A
Clipper Lace	#1A
Alligator Lace	#7

Special Characteristics:

Thicker, stronger version of the Poly White Nitrile Series; features heavier, stronger polyester fabric RFL treated for greater adhesion under rugged conditions; also heavier skim coats between plies and a superior wear-resistant nitrile cover; usual advantages of 100% polyester carcass. Can be hot water and steam cleaned. FDA approved.

*****All Values are nominal and subject to change without notice.*****

St. Louis, MO	Boise, ID	Charlotte, NC	Grand Prairie, TX	Philadelphia, PA	Sacramento, CA	Vancouver, WA	Beltservice Canada	Beltservice de Mexico
800-727-2358	800-423-4469	800-849-2358	800-727-2358	800-777-1314	800-289-2358	800-234-2358	877-210-7423	+52 55 53620434
314-344-8500	208-342-4681	704-949-2100	314-344-8555	215-295-1900	916-419-7191	360-567-4280	905-565-9217	+44 2980 3266

FOOD BELTS

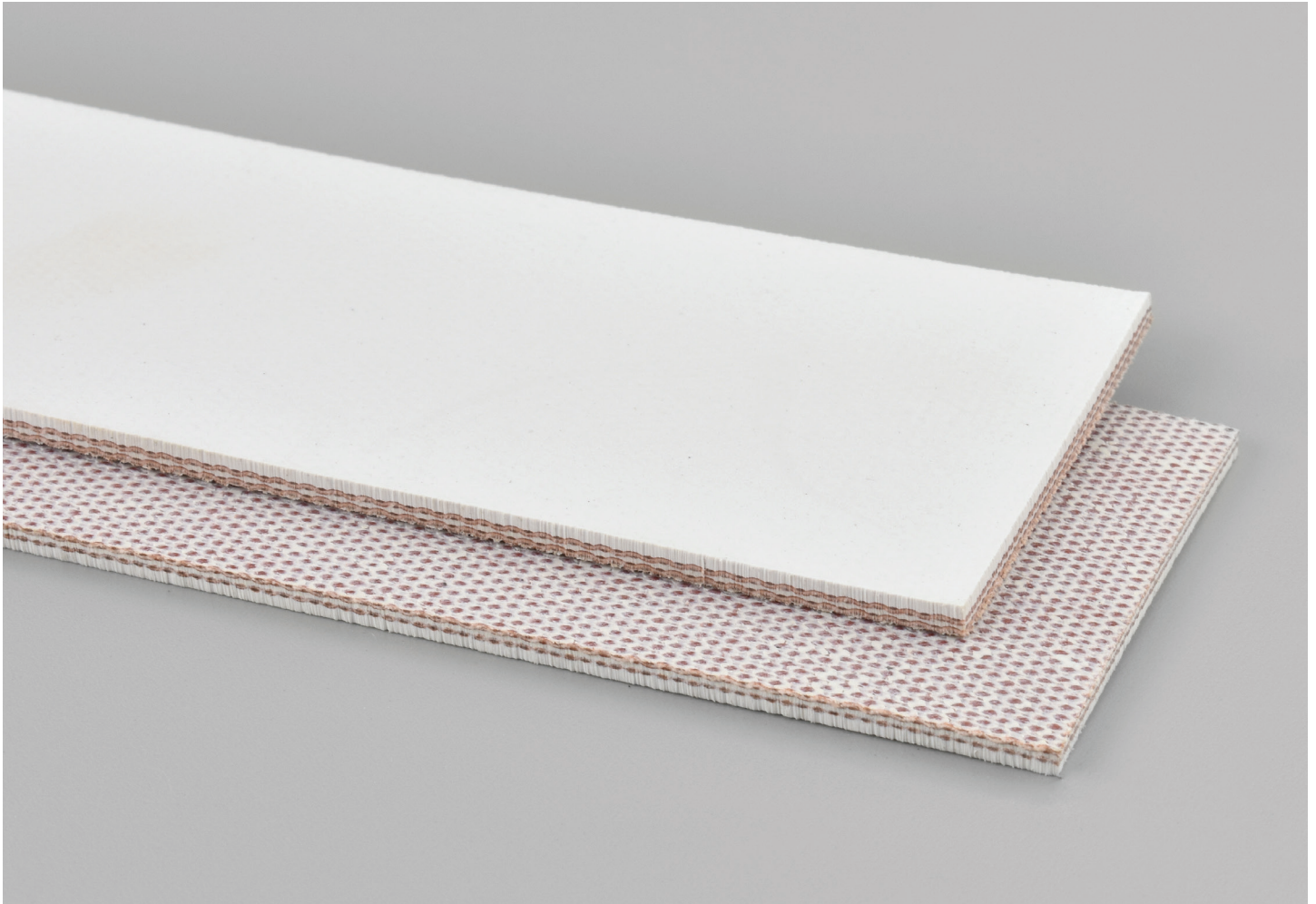
2 PLY POLY 100 WHITE NITRILE COS

7

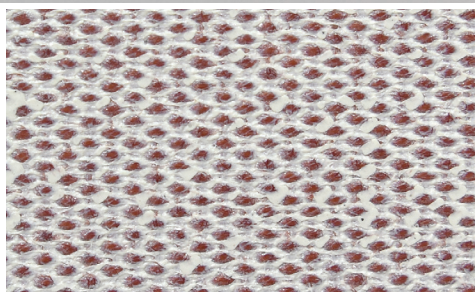
Catalog Number

10385

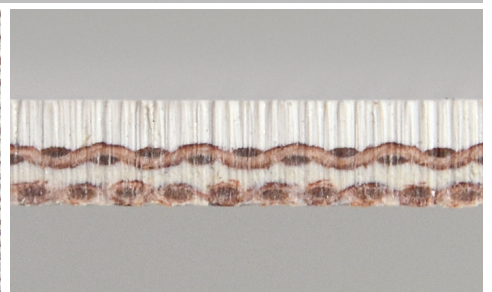
Part Number



Top Cover View



Bottom Cover View



Ply View