

Catalog # **134HD**
Item number: **32244**
Description:

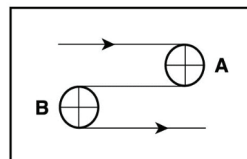
2 Ply Poly 65 Black PVC AS FR

International Designation:

EM11/2 0/V6 AS FR

Construction:

Compound Top Cover	Black PVC
Top Cover Thickness (in)	(0.60 mm) 0.0236 in
Top Cover Description	Smooth
Top Cover Shore	70
Compound Bottom Cover	Polyester
Bottom Cover Thickness (in)	(0.00 mm) 0.0000 in
Bottom Cover Description	Bare
Bottom Cover Shore	N/A
Number of Plies	2
Anti Static	Yes
Overall Gauge (in)	(2.60 mm) 0.1024 in
Unit Weight- lb/PIW	0.0597 lbs/PIW
Material Between Plies	PVC
Maximum Width (in)	84 in
Temperature Range (°F)- High	180 °F
Temperature Range (°F)- Low	20 °F

Pulley Diameter, Minimum


A) Normal Flex	(44.45 mm) 1.7500 in
B) Back Flex	(88.90 mm) 3.5000 in

Belt Strength:

Pull for 1% Elongation	(11 N/mm) 65 lbs/sq in
------------------------	------------------------

Splice Instructions:

Foil	Yes
Splice Process	Finger
Press Temperature (°F)	330 °F
Press Pressure (psi)	25 lbs/sq in

Note: Listed above is a guideline only. Every vulcanizer is different and will show different results. We recommend that you do a test splice with your press before attempting the actual belt splice.

Other:

Cross Rigid	No
Impression Top	No
Oil Resistant	No
Fire Resistant	Yes
FDA Approved	No

Special Characteristics:

N/A

*****All Values are nominal and subject to change without notice.*****

St. Louis, MO 800-727-2358 314-344-8500	Boise, ID 800-423-4469 208-342-4681	Charlotte, NC 800-849-2358 704-949-2100	Grand Prairie, TX 800-727-2358 314-344-8555	Philadelphia, PA 800-777-1314 215-295-1900	Sacramento, CA 800-289-2358 916-419-7191	Vancouver, WA 800-234-2358 360-567-4280	Beltservice Canada 877-210-7423 905-565-9217	Beltservice de Mexico +52 55 53620434 +44 2980 3266
--	--	--	--	---	---	--	---	--

POWER TURN REPLACEMENT BELTS

2 PLY POLY 65 BLACK PVC AS FR

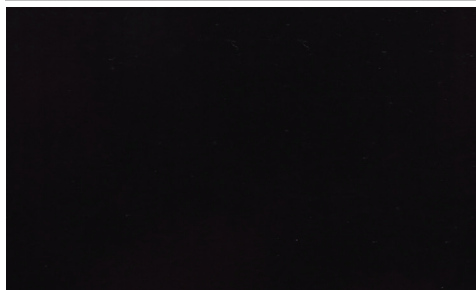
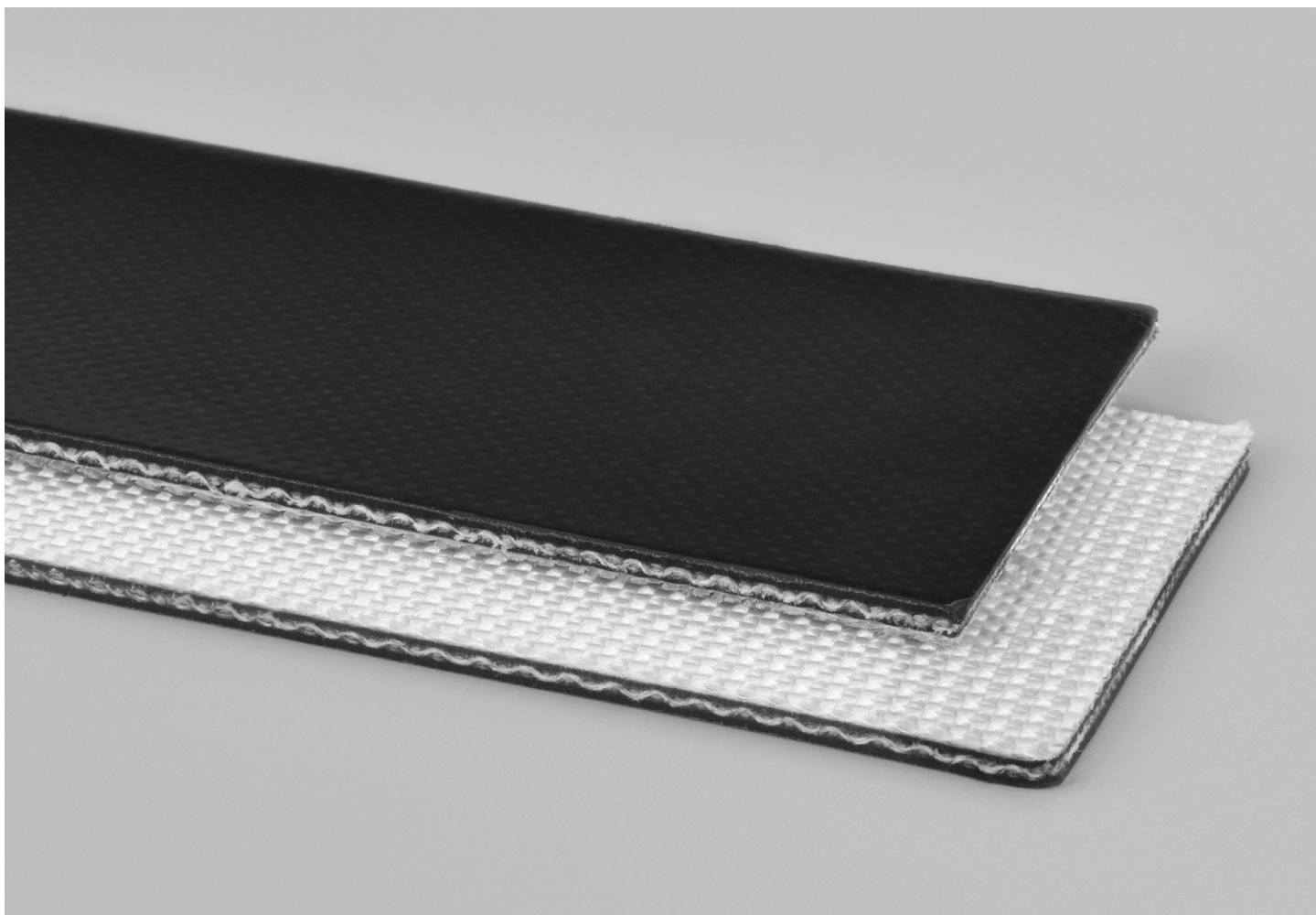
INTERNATIONAL DESIGNATION: EM11/2 0/V6 AS FR

134HD

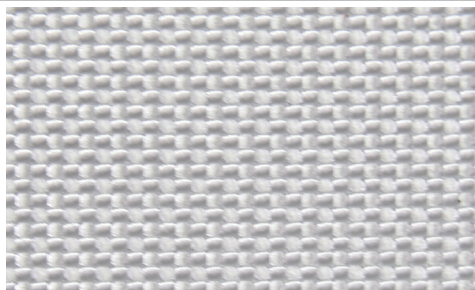
Catalog Number

32244

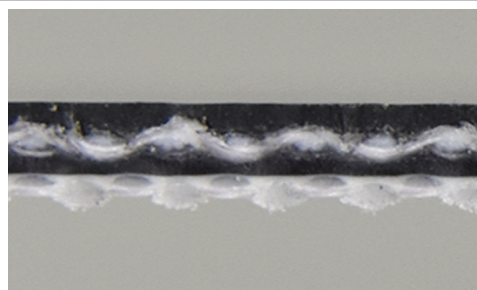
Part Number



Top Cover View



Bottom Cover View



Ply View