

**Catalog #**                      **134**
**Item number:**                **20781**
**Description:**

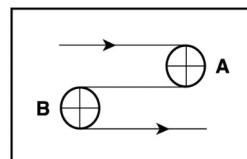
2 Ply Poly 69 Black PVC AS FR

**International Designation:**

EM12/2 0/V6 Black AS FR

**Construction:**

Compound Top Cover	Black PVC
Top Cover Thickness (in)	(0.60 mm) 0.0236 in
Top Cover Description	Smooth
Top Cover Shore	70
Compound Bottom Cover	Polyester
Bottom Cover Thickness (in)	(0.00 mm) 0.0000 in
Bottom Cover Description	Bare
Bottom Cover Shore	N/A
Number of Plies	2
Anti Static	Yes
Overall Gauge (in)	(2.30 mm) 0.0906 in
Unit Weight- lb/PIW	0.0495 lbs/PIW
Material Between Plies	PVC
Maximum Width (in)	102 in
Temperature Range (°F)- High	176 °F
Temperature Range (°F)- Low	14 °F

**Pulley Diameter, Minimum**


A) Normal Flex                      (50.00 mm) 1.9685 in

B) Back Flex                        (75.00 mm) 2.9528 in

**Belt Strength:**

Pull for 1% Elongation                      (12 N/mm) 69 lbs/sq in

**Splice Instructions:**

Foil	Yes
Splice Process	Finger
Press Temperature (°F)	330 °F
Press Pressure (psi)	25 lbs/sq in

Note: Listed above is a guideline only. Every vulcanizer is different and will show different results. We recommend that you do a test splice with your press before attempting the actual belt splice.

**Other:**

Cross Rigid	No
Impression Top	No
Oil Resistant	No
Fire Resistant	Yes
FDA Approved	No

**Special Characteristics:**

This belt is ideal for Power Turn applications for transport of luggage at airports, package handling and distribution centers. The top cover is a smooth black PVC 0.06 mm thick flame retardant PVC suitable for all airports and distributions centers.

\*\*\*\*\*All Values are nominal and subject to change without notice.\*\*\*\*\*

<b>St. Louis, MO</b>	<b>Boise, ID</b>	<b>Charlotte, NC</b>	<b>Grand Prairie, TX</b>	<b>Philadelphia, PA</b>	<b>Sacramento, CA</b>	<b>Vancouver, WA</b>	<b>Beltservice Canada</b>	<b>Beltservice de Mexico</b>
800-727-2358	800-423-4469	800-849-2358	800-727-2358	800-777-1314	800-289-2358	800-234-2358	877-210-7423	+52 55 53620434
314-344-8500	208-342-4681	704-949-2100	314-344-8555	215-295-1900	916-419-7191	360-567-4280	905-565-9217	+44 2980 3266

# POWER TURN REPLACEMENT BELTS

2 PLY POLY 69 BLACK PVC AS FR

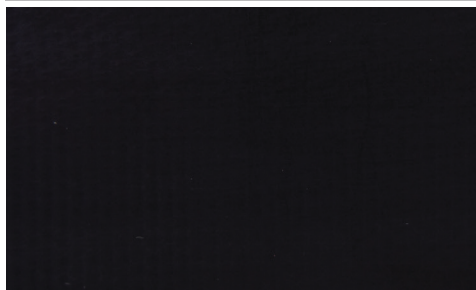
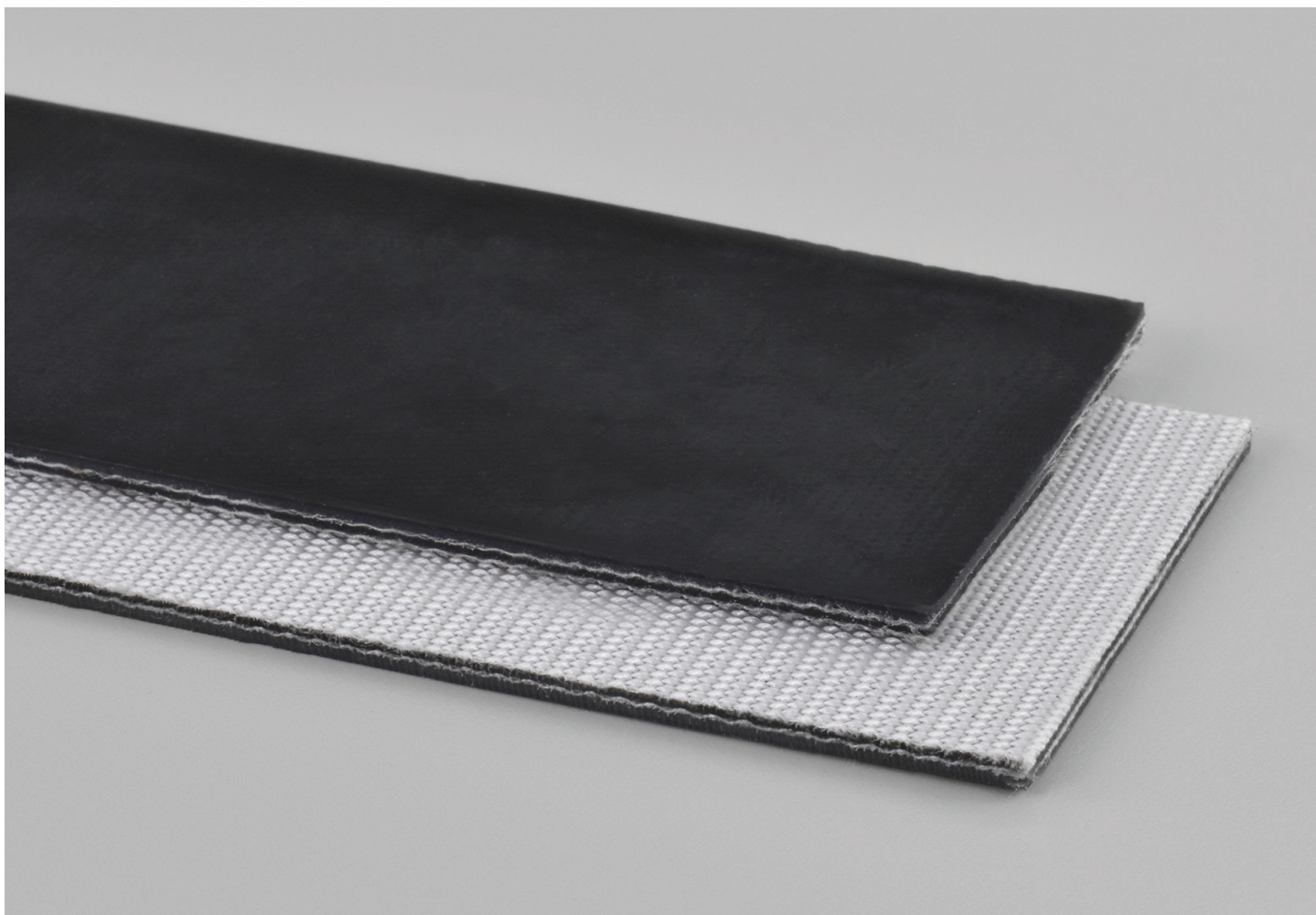
INTERNATIONAL DESIGNATION: EM12/2 0/V6 BLACK AS FR

**134**

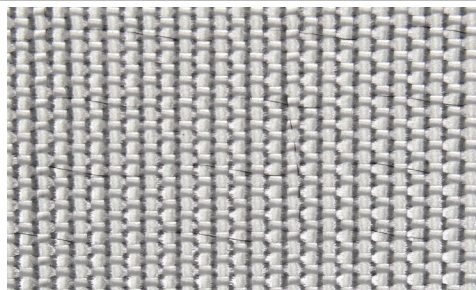
Catalog Number

**20781**

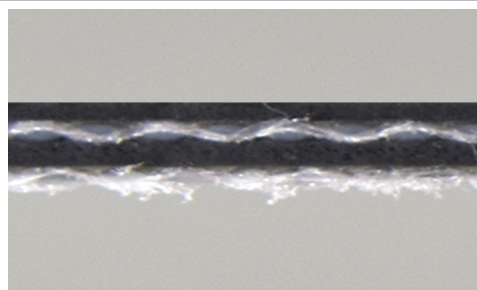
Part Number



Top Cover View



Bottom Cover View



Ply View



**BELTSERVICE**  
CORPORATION

[beltservice.com](http://beltservice.com)

REV 3/23