

Catalog # **133**
Item number: **10864**
Description:

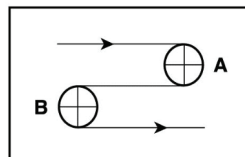
2 Ply Poly 69 Black PVC IP AS FR

International Designation:

EM12/2 U0/V6 Black IP AS FR

Construction:

| | |
|------------------------------|---------------------|
| Compound Top Cover | Black PVC |
| Top Cover Thickness (in) | (0.60 mm) 0.0236 in |
| Top Cover Description | Inverted Pyramid |
| Top Cover Shore | 35 |
| Compound Bottom Cover | Polyester |
| Bottom Cover Thickness (in) | (0.00 mm) 0.0000 in |
| Bottom Cover Description | Bare |
| Bottom Cover Shore | N/A |
| Number of Plies | 2 |
| Anti Static | Yes |
| Overall Gauge (in) | (2.60 mm) 0.1023 in |
| Unit Weight- lb/PIW | 0.0495 lbs/PIW |
| Material Between Plies | PVC |
| Maximum Width (in) | 102 in |
| Temperature Range (°F)- High | 176 °F |
| Temperature Range (°F)- Low | -4 °F |

Pulley Diameter, Minimum


A) Normal Flex (50.00 mm) 1.9685 in

B) Back Flex (75.00 mm) 2.9528 in

Belt Strength:

Pull for 1% Elongation (12 N/mm) 69 lbs/sq in

Splice Instructions:

| | |
|------------------------|--------------|
| Foil | Yes |
| Splice Process | Finger |
| Press Temperature (°F) | 330 °F |
| Press Pressure (psi) | 25 lbs/sq in |

Note: Listed above is a guideline only. Every vulcanizer is different and will show different results. We recommend that you do a test splice with your press before attempting the actual belt splice.

Other:

| | |
|----------------|-----|
| Cross Rigid | No |
| Impression Top | Yes |
| Oil Resistant | No |
| Fire Resistant | Yes |
| FDA Approved | No |

Special Characteristics:

A featured belt for Power Turn conveyors in airports and package distribution centers. This belt has an inverted pyramid PVC top cover that increases grip, making it excellent for slight incline/decline conveyor systems. This belt is antistatic and flame retardant.

*****All Values are nominal and subject to change without notice.*****

| | | | | | | | | |
|----------------------|------------------|----------------------|--------------------------|-------------------------|-----------------------|----------------------|---------------------------|------------------------------|
| St. Louis, MO | Boise, ID | Charlotte, NC | Grand Prairie, TX | Philadelphia, PA | Sacramento, CA | Vancouver, WA | Beltservice Canada | Beltservice de Mexico |
| 800-727-2358 | 800-423-4469 | 800-849-2358 | 800-727-2358 | 800-777-1314 | 800-289-2358 | 800-234-2358 | 877-210-7423 | +52 55 53620434 |
| 314-344-8500 | 208-342-4681 | 704-949-2100 | 314-344-8555 | 215-295-1900 | 916-419-7191 | 360-567-4280 | 905-565-9217 | +44 2980 3266 |

POWER TURN REPLACEMENT BELTS

2 DNFP 05/LB2 IM M

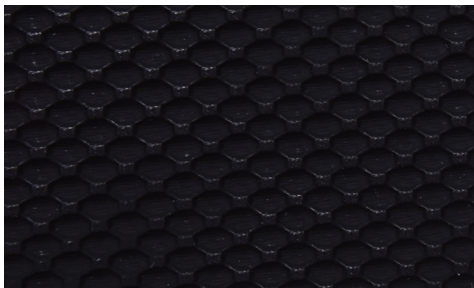
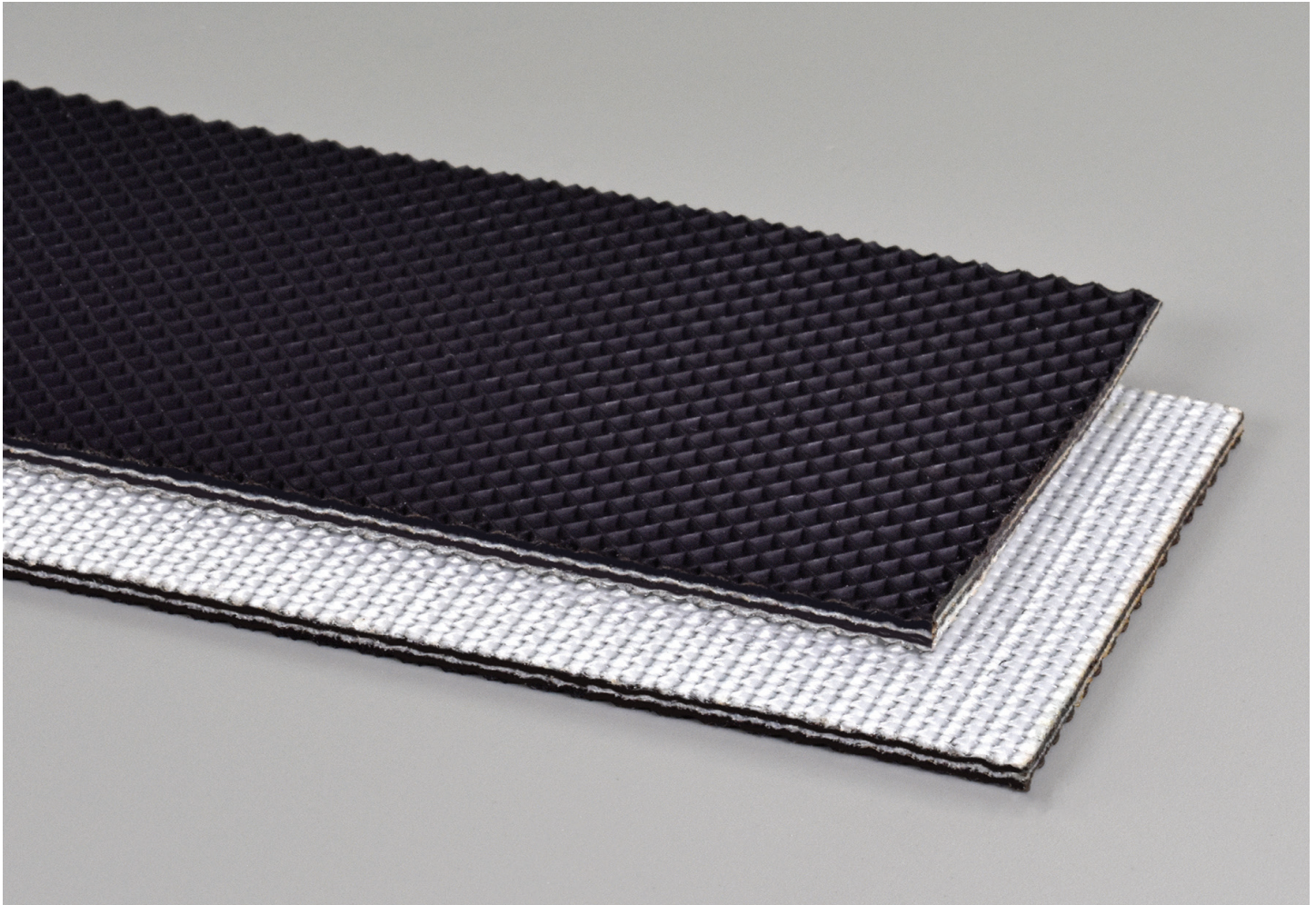
INTERNATIONAL DESIGNATION: EM12/2 U0/V6 BLACK IP AS FR

133

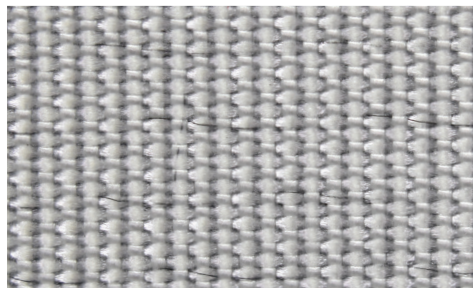
Catalog Number

10864

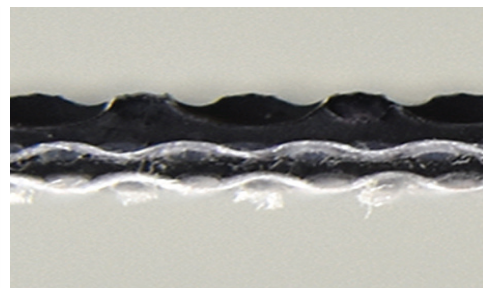
Part Number



Top Cover View



Bottom Cover View



Ply View



BELTSERVICE
CORPORATION

beltservice.com

REV 3/23