

**Catalog #**                      **201**
**Item number:**                **29974**
**Description:**

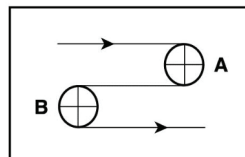
ZL Blue Carbox Nitrile Rough Top x B

**International Designation:**

Blue Carbox Nitrile Rough Top x B

**Construction:**

Compound Top Cover	Blue Nitrile
Top Cover Thickness (in)	(4.80 mm) 0.1890 in
Top Cover Description	Roughtop
Top Cover Shore	65
Compound Bottom Cover	Polyester
Bottom Cover Thickness (in)	(0.00 mm) 0.0000 in
Bottom Cover Description	Bare
Bottom Cover Shore	N/A
Number of Plies	1
Anti Static	No
Overall Gauge (in)	(6.38 mm) 0.2510 in
Unit Weight- lb/PIW	0.0975 lbs/PIW
Material Between Plies	Spiral Polyester
Maximum Width (in)	72 in
Temperature Range (°F)- High	250 °F
Temperature Range (°F)- Low	0 °F

**Pulley Diameter, Minimum**


A) Normal Flex                                      (76.20 mm) 3.0000 in

B) Back Flex                                        (152.40 mm) 6.0000 in

**Belt Strength:**

Pull for 1% Elongation                                      (26 N/mm) 150 lbs/sq in

**Splice Instructions:**

Foil	No
Splice Process	n/a
Press Temperature (°F)	0 °F
Press Pressure (psi)	0 lbs/sq in

Note: Listed above is a guideline only. Every vulcanizer is different and will show different results. We recommend that you do a test splice with your press before attempting the actual belt splice.

**Other:**

Cross Rigid	Yes
Impression Top	Yes
Oil Resistant	Yes
Fire Resistant	No
FDA Approved	No

**Special Characteristics:**

ZipLink is a breakthrough in belting design that combines time tested rubber cover materials with a structured spiral mesh than can be easily spliced at any length into a continuous belt without the need for special tools. ZipLink's construction eliminates points of weakness because there is no loss of strength at the splice area. The recommended working tension of all ZipLink belts is 150lbs/in with very little stretch to the polyester mesh. This belt is stocked at 72" wide and can easily ship within 3 working days.

\*\*\*\*\*All Values are nominal and subject to change without notice.\*\*\*\*\*

<b>St. Louis, MO</b> 800-727-2358 314-344-8500	<b>Boise, ID</b> 800-423-4469 208-342-4681	<b>Charlotte, NC</b> 800-849-2358 704-949-2100	<b>Grand Prairie, TX</b> 800-727-2358 314-344-8555	<b>Philadelphia, PA</b> 800-777-1314 215-295-1900	<b>Sacramento, CA</b> 800-289-2358 916-419-7191	<b>Vancouver, WA</b> 800-234-2358 360-567-4280	<b>Beltservice Canada</b> 877-210-7423 905-565-9217	<b>Beltservice de Mexico</b> +52 55 53620434 +44 2980 3266
--	--	--	--	---	---	--	---	--

# INDUSTRIAL & FOOD GRADE BELTING

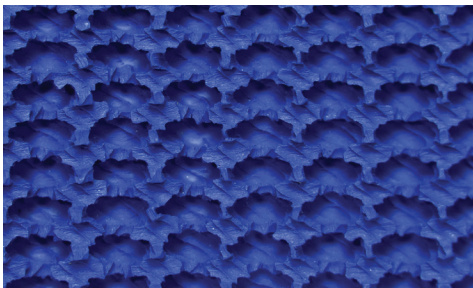
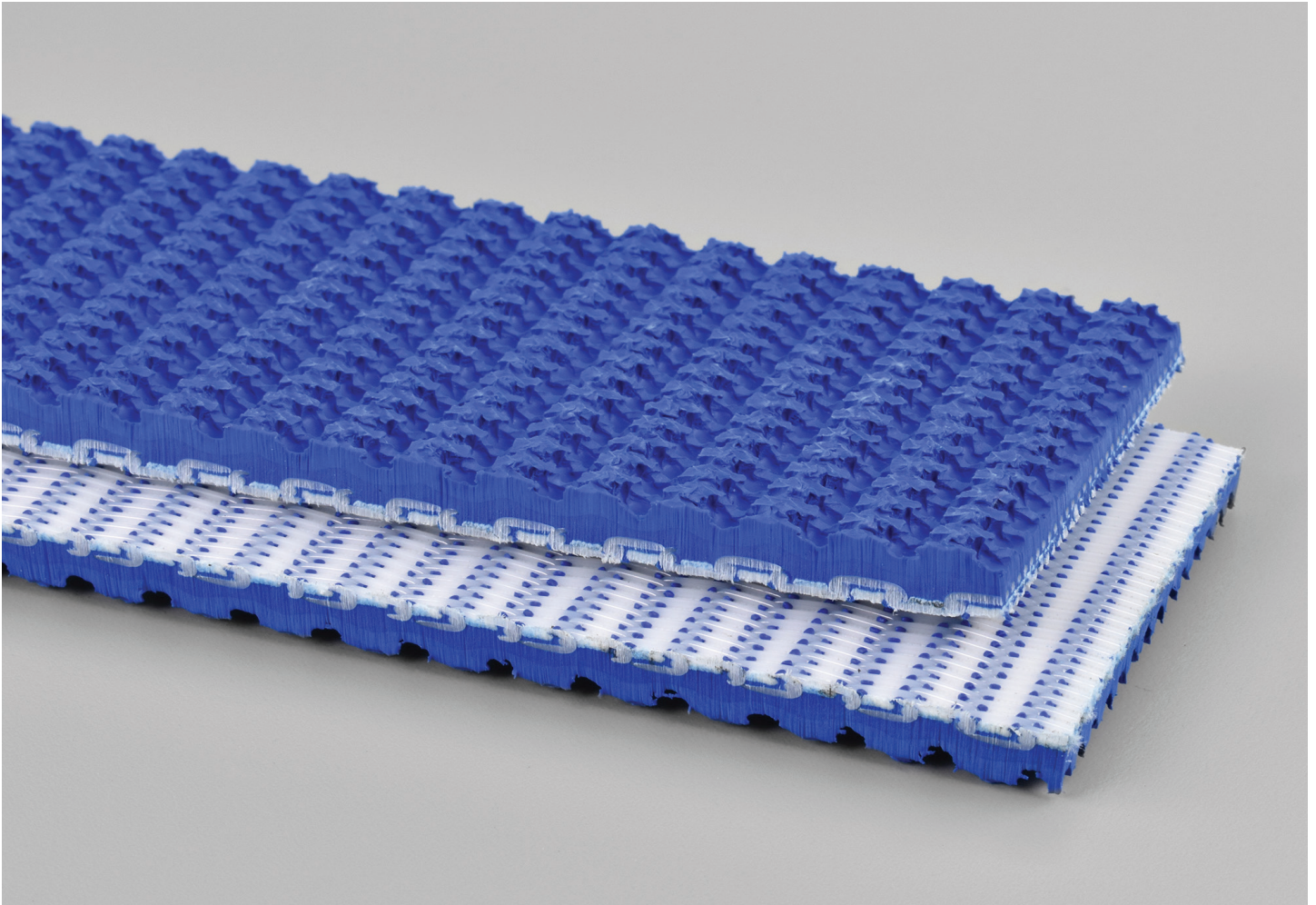
ZL BLUE CARBOX NITRILE ROUGH TOP X B FDA

**201**

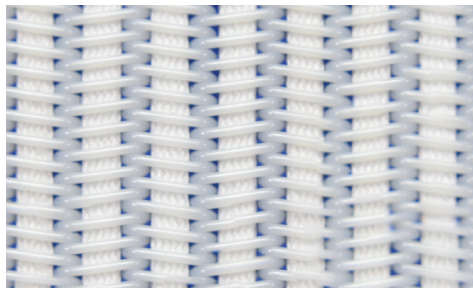
Catalog Number

**29974**

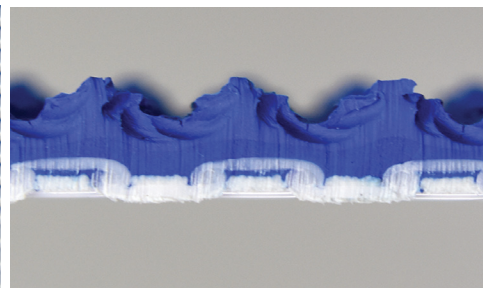
Part Number



Top Cover View



Bottom Cover View



Ply View



**BELTSERVICE**  
CORPORATION

[beltservice.com](http://beltservice.com)

REV 3/23