

Catalog # 178
Item number: 49996
Description:

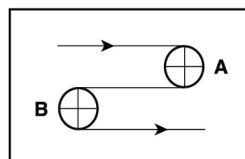
4 Ply 170 Grey 50A 3/8in Square x Bare

International Designation:

EMQP CB50 SP110

Construction:

Compound Top Cover	Grey NR/SBR
Top Cover Thickness (in)	(8.03 mm) 0.3160 in
Top Cover Description	SP110 10mm Square
Top Cover Shore	50A
Compound Bottom Cover	None
Bottom Cover Thickness (in)	(0.00 mm) 0.0000 in
Bottom Cover Description	Bare
Bottom Cover Shore	N/A
Number of Plies	4
Anti Static	No
Overall Gauge (in)	(13.72 mm) 0.5400 in
Unit Weight- lb/PIW	0.2400 lbs/PIW
Material Between Plies	SBR
Maximum Width (in)	65 in
Temperature Range (°F)- High	220 °F
Temperature Range (°F)- Low	20 °F

Pulley Diameter, Minimum


A) Normal Flex (152.40 mm) 6.0000 in

B) Back Flex (177.80 mm) 7.0000 in

Belt Strength:

Pull for 1% Elongation (30 N/mm) 170 lbs/sq in

Splice Instructions:

Foil	No
Splice Process	Step Hot
Press Temperature (°F)	0 °F
Press Pressure (psi)	0 lbs/sq in

Note: Listed above is a guideline only. Every vulcanizer is different and will show different results. We recommend that you do a test splice with your press before attempting the actual belt splice.

Other:

Cross Rigid	No
Impression Top	Yes
Oil Resistant	No
Fire Resistant	No
FDA Approved	No

Special Characteristics:

Non-Marking. Good grip and surface calibration accuracy for longer wood finishing machine belts. Shore A 50 durometer maintains good tack for sheet puller belts or light incline applications.

*****All Values are nominal and subject to change without notice.*****

St. Louis, MO 800-727-2358 314-344-8500	Boise, ID 800-423-4469 208-342-4681	Charlotte, NC 800-849-2358 704-949-2100	Grand Prairie, TX 800-727-2358 314-344-8555	Philadelphia, PA 800-777-1314 215-295-1900	Sacramento, CA 800-289-2358 916-419-7191	Vancouver, WA 800-234-2358 360-567-4280	Beltservice Canada 877-210-7423 905-565-9217	Beltservice de Mexico +52 55 53620434 +44 2980 3266
--	--	--	--	---	---	--	---	--

WOOD SFMB

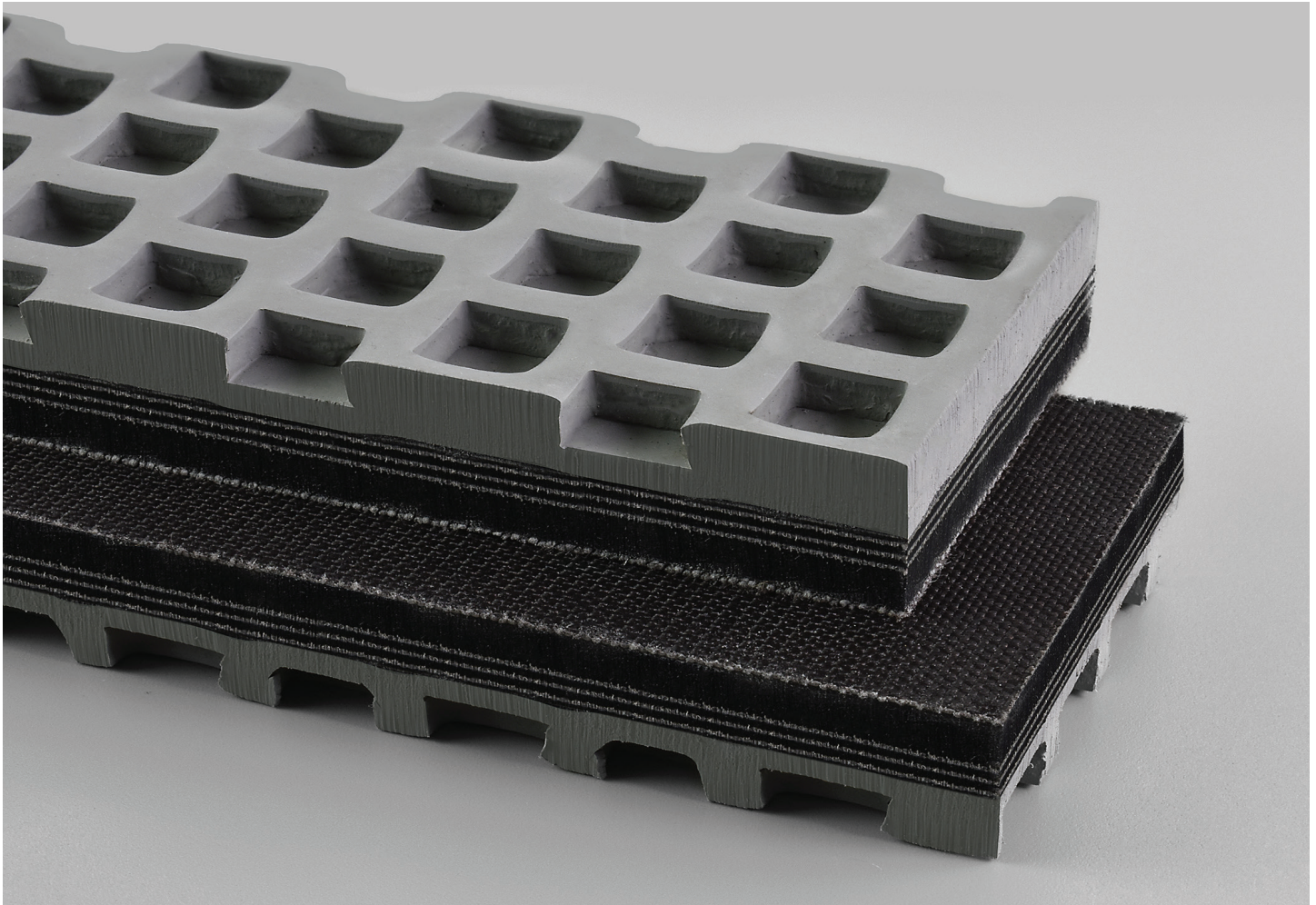
4 PLY 170 GREY 50A 3/8IN SQUARE X BARE

178

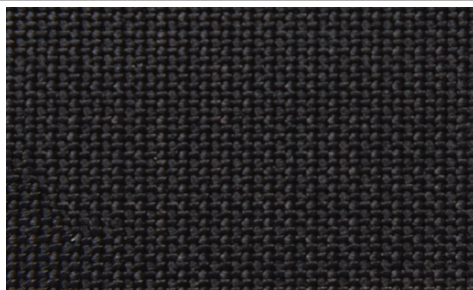
Catalog Number

49996

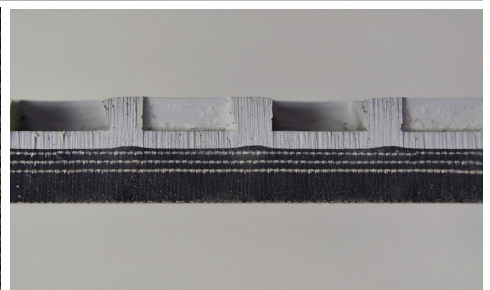
Part Number



Top Cover View



Bottom Cover View



Ply View



BELTSERVICE
CORPORATION

beltservice.com

REV 3/23