

Catalog # 177

Item number: 50230

Description:

3 Ply 120 Grey 50A 3/8in Square x Bare

International Designation:

EMQ CB50 SP110

Pulley Diameter, Minimum

Min. Pulley Dia. - Head @ 80 - 100% Tension 6.00 in

Min. Pulley Dia. - Head @ 60 - 79% Tension 5.00 in

Min. Pulley Dia. - Head @ 59% Tension or Below 4.00 in

Minimum Pulley Diameter- Tail 6.00 in

Construction:

Compound Top Cover Gray SBR

Color Black

Top Cover Thickness (in) (8.03 mm) 5/16 in

Top Cover Description SP110 10mm Square

Compound Bottom Cover None

Bottom Cover Thickness (in) (0.00 mm) 0.00 in

Bottom Cover Description Bare

Number of Plies 3

Overall Gauge (in) (13.00 mm) 1/2 in

Unit Weight- lb/PIW 0.1950 lbs/PIW

Carcass Type Polyester

Compound Black SBR

Temperature Range (°F)- High 220 °F

Temperature Range (°F)- Low 20 °F

Splice Instructions:

Splice Step Size 4.00 in

Splice Process Step Hot

Other:

Static Conducting Yes

Cross Rigid No

High Heat No

Impression Top No

Oil Resistant No

Fire Resistant No

FDA Approved No

Suggested Fasteners:

Flexco Plate/Rivet N/A

Flexco Hinged N/A

Alligator Staple #125

Clipper Lace #1

Alligator Lace #7

Belt Strength:

Tension Rating (PIW) 120 PIW

Special Characteristics:

Non-Marking. Good grip and surface calibration accuracy for longer wood finishing machine belts. Shore A 50 durometer maintains good tack for sheet puller belts or light incline applications.

*****All Values are nominal and subject to change without notice.*****

St. Louis, MO	Boise, ID	Charlotte, NC	Grand Prairie, TX	Philadelphia, PA	Sacramento, CA	Vancouver, WA	Beltservice Canada	Beltservice de Mexico
800-727-2358	800-423-4469	800-849-2358	800-727-2358	800-777-1314	800-289-2358	800-234-2358	877-210-7423	+52 55 53620434
314-344-8500	208-342-4681	704-949-2100	314-344-8555	215-295-1900	916-419-7191	360-567-4280	905-565-9217	+44 2980 3266

WOOD SFMB

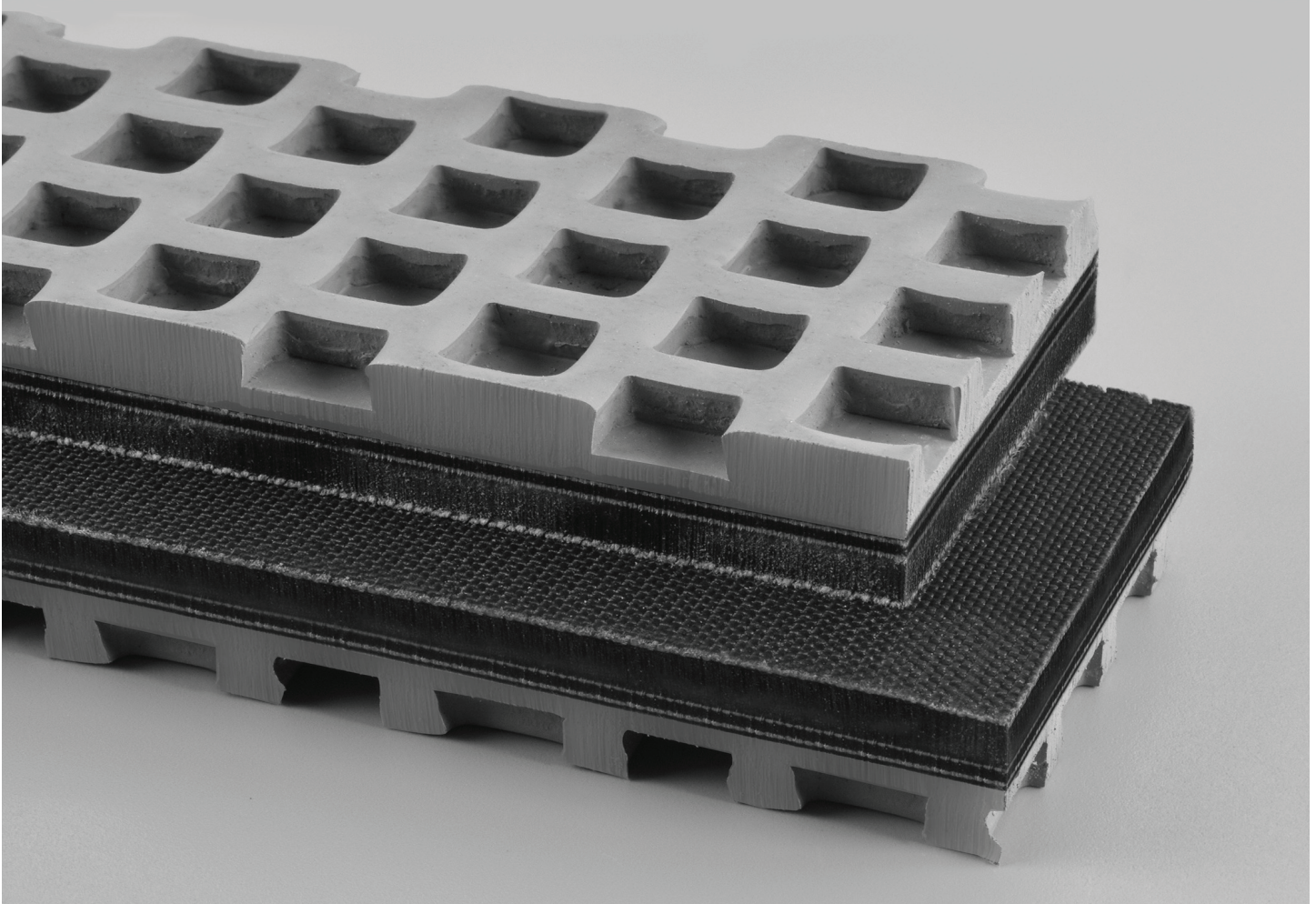
3 PLY 120 GREY 50A 3/8IN SQUARE X BARE

177

Catalog Number

50230

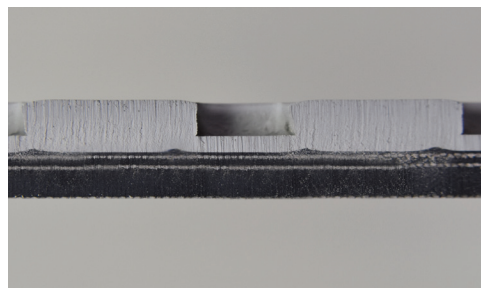
Part Number



Top Cover View



Bottom Cover View



Ply View



BELTSERVICE
CORPORATION

beltservice.com

REV 3/23