

Catalog # **172B**
Item number: **49047**
Description:

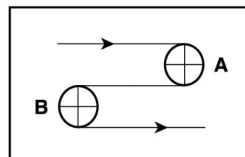
3 Ply 120 Black 57A 1/2in Diamond x Bare

International Designation:

EPQ CS57 SP111

Construction:

Compound Top Cover	Black NR/SBR
Top Cover Thickness (in)	(8.03 mm) 0.3160 in
Top Cover Description	SP111 12mm Diamond
Top Cover Shore	57A
Compound Bottom Cover	n/a
Bottom Cover Thickness (in)	(0.00 mm) 0.0000 in
Bottom Cover Description	Bare
Bottom Cover Shore	N/A
Number of Plies	3
Anti Static	Yes
Overall Gauge (in)	(10.87 mm) 0.4280 in
Unit Weight- lb/PIW	0.1800 lbs/PIW
Material Between Plies	SBR
Maximum Width (in)	65 in
Temperature Range (°F)- High	220 °F
Temperature Range (°F)- Low	20 °F

Pulley Diameter, Minimum


A) Normal Flex (120.65 mm) 4.7500 in

B) Back Flex (146.05 mm) 5.7500 in

Belt Strength:

Pull for 1% Elongation (21 N/mm) 120 lbs/sq in

Splice Instructions:

Foil	No
Splice Process	Step Hot
Press Temperature (°F)	0 °F
Press Pressure (psi)	0 lbs/sq in

Note: Listed above is a guideline only. Every vulcanizer is different and will show different results. We recommend that you do a test splice with your press before attempting the actual belt splice.

Other:

Cross Rigid	No
Impression Top	Yes
Oil Resistant	No
Fire Resistant	No
FDA Approved	No

Special Characteristics:

Anti-Static and mark resistant. Good grip and surface calibration accuracy.

*****All Values are nominal and subject to change without notice.*****

St. Louis, MO	Boise, ID	Charlotte, NC	Grand Prairie, TX	Philadelphia, PA	Sacramento, CA	Vancouver, WA	Beltservice Canada	Beltservice de Mexico
800-727-2358	800-423-4469	800-849-2358	800-727-2358	800-777-1314	800-289-2358	800-234-2358	877-210-7423	+52 55 53620434
314-344-8500	208-342-4681	704-949-2100	314-344-8555	215-295-1900	916-419-7191	360-567-4280	905-565-9217	+44 2980 3266

WOOD SFMB

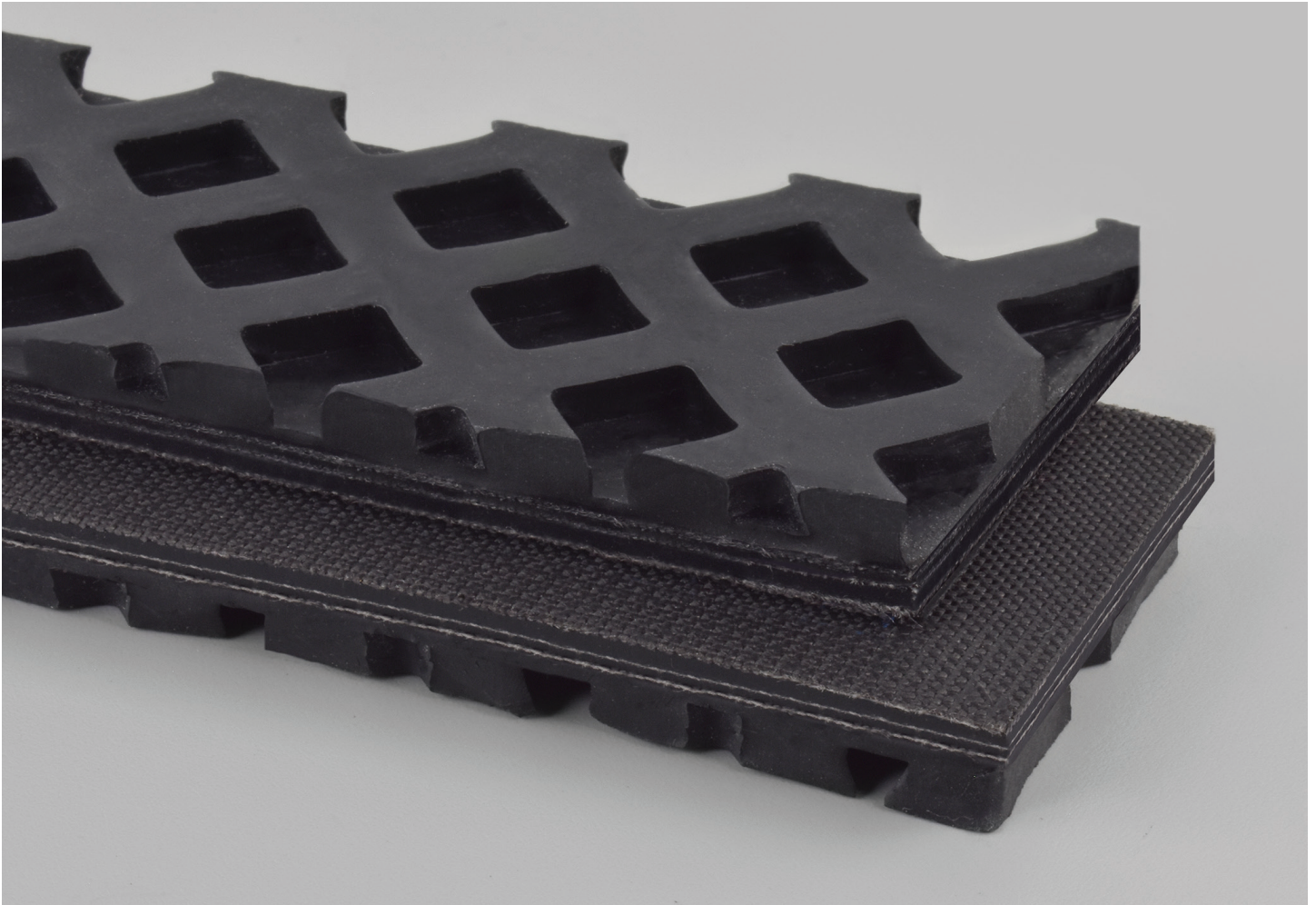
3 PLY 120 BLACK 57A 1/2IN DIAMOND X BARE AS

172B

Catalog Number

49047

Part Number



Top Cover View



Bottom Cover View



Ply View



BELTSERVICE
CORPORATION

beltservice.com

REV 3/23