

**Catalog #**                      **170**
**Item number:**                **42200**
**Description:**

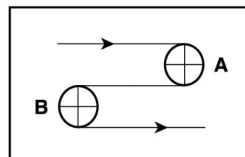
3 Ply 120 Grey 50A 20mm Diamond x Bare

**International Designation:**

EPQ CB50 SP108

**Construction:**

|                              |                      |
|------------------------------|----------------------|
| Compound Top Cover           | Grey NR/SBR          |
| Top Cover Thickness (in)     | (6.35 mm) 0.2500 in  |
| Top Cover Description        | SP108 20mm Diamond   |
| Top Cover Shore              | 50A                  |
| Compound Bottom Cover        | n/a                  |
| Bottom Cover Thickness (in)  | (0.00 mm) 0.0000 in  |
| Bottom Cover Description     | Bare                 |
| Bottom Cover Shore           | N/A                  |
| Number of Plies              | 3                    |
| Anti Static                  | No                   |
| Overall Gauge (in)           | (10.41 mm) 0.4100 in |
| Unit Weight- lb/PIW          | 0.1800 lbs/PIW       |
| Material Between Plies       | SBR                  |
| Maximum Width (in)           | 65 in                |
| Temperature Range (°F)- High | 220 °F               |
| Temperature Range (°F)- Low  | 20 °F                |

**Pulley Diameter, Minimum**


A) Normal Flex                      (120.65 mm) 4.7500 in

B) Back Flex                        (146.05 mm) 5.7500 in

**Belt Strength:**

Pull for 1% Elongation                      (21 N/mm) 120 lbs/sq in

**Splice Instructions:**

|                        |              |
|------------------------|--------------|
| Foil                   | No           |
| Splice Process         | Step Hot     |
| Press Temperature (°F) | 300 °F       |
| Press Pressure (psi)   | 75 lbs/sq in |

Note: Listed above is a guideline only. Every vulcanizer is different and will show different results. We recommend that you do a test splice with your press before attempting the actual belt splice.

**Other:**

|                |     |
|----------------|-----|
| Cross Rigid    | No  |
| Impression Top | Yes |
| Oil Resistant  | No  |
| Fire Resistant | No  |
| FDA Approved   | No  |

**Special Characteristics:**

Non-Marking. Good grip and surface calibration accuracy for wood finishing machine belts. Shore A 50 durometer maintains a a high friction contact surface for sheet puller belts or light incline applications.

\*\*\*\*\*All Values are nominal and subject to change without notice.\*\*\*\*\*

|                      |                  |                      |                          |                         |                       |                      |                           |                              |
|----------------------|------------------|----------------------|--------------------------|-------------------------|-----------------------|----------------------|---------------------------|------------------------------|
| <b>St. Louis, MO</b> | <b>Boise, ID</b> | <b>Charlotte, NC</b> | <b>Grand Prairie, TX</b> | <b>Philadelphia, PA</b> | <b>Sacramento, CA</b> | <b>Vancouver, WA</b> | <b>Beltservice Canada</b> | <b>Beltservice de Mexico</b> |
| 800-727-2358         | 800-423-4469     | 800-849-2358         | 800-727-2358             | 800-777-1314            | 800-289-2358          | 800-234-2358         | 877-210-7423              | +52 55 53620434              |
| 314-344-8500         | 208-342-4681     | 704-949-2100         | 314-344-8555             | 215-295-1900            | 916-419-7191          | 360-567-4280         | 905-565-9217              | +44 2980 3266                |

# WOOD SFMB

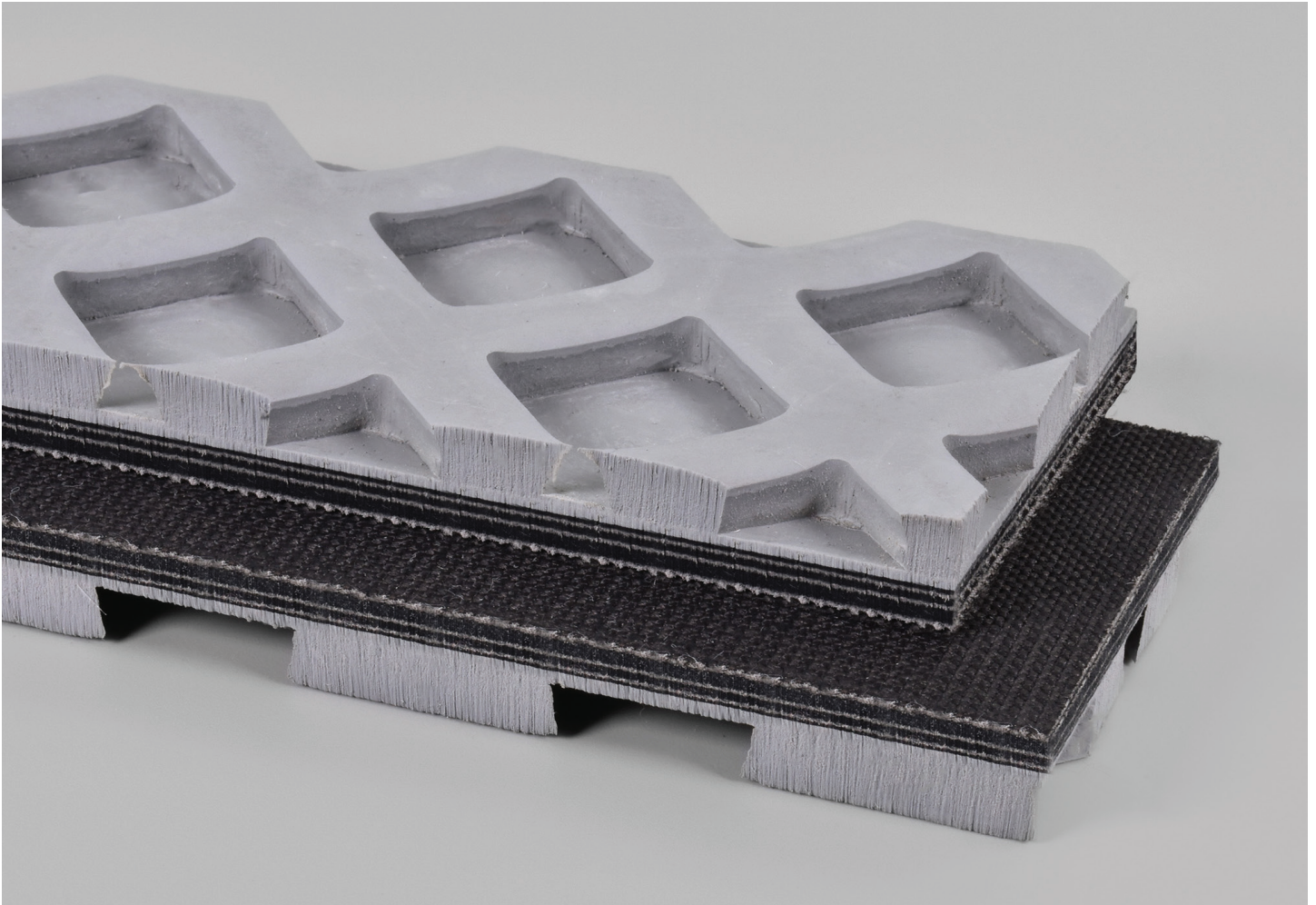
3 PLY 120 GREY 50A 20MM DIAMOND X BARE

**170**

Catalog Number

**42200**

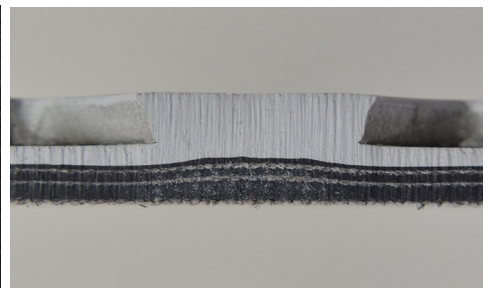
Part Number



Top Cover View



Bottom Cover View



Ply View



**BELTSERVICE**  
CORPORATION

[beltservice.com](http://beltservice.com)

REV 3/23