

Catalog # 175
Item number: 49046
Description:

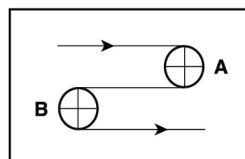
2 Ply 80 Black 57A 1/2in Diamond x Bare

International Designation:

ELG CS57 SP111

Construction:

Compound Top Cover	Black NR/SBR
Top Cover Thickness (in)	(5.99 mm) 0.2360 in
Top Cover Description	SP111 12mm Diamond
Top Cover Shore	57A
Compound Bottom Cover	n/a
Bottom Cover Thickness (in)	(0.00 mm) 0.0000 in
Bottom Cover Description	Bare
Bottom Cover Shore	N/A
Number of Plies	2
Anti Static	Yes
Overall Gauge (in)	(8.13 mm) 0.3200 in
Unit Weight- lb/PIW	0.1000 lbs/PIW
Material Between Plies	SBR
Maximum Width (in)	65 in
Temperature Range (°F)- High	220 °F
Temperature Range (°F)- Low	20 °F

Pulley Diameter, Minimum


A) Normal Flex (88.90 mm) 3.5000 in

B) Back Flex (101.60 mm) 4.0000 in

Belt Strength:

Pull for 1% Elongation (14 N/mm) 80 lbs/sq in

Splice Instructions:

Foil	No
Splice Process	Step Hot
Press Temperature (°F)	0 °F
Press Pressure (psi)	0 lbs/sq in

Note: Listed above is a guideline only. Every vulcanizer is different and will show different results. We recommend that you do a test splice with your press before attempting the actual belt splice.

Other:

Cross Rigid	No
Impression Top	Yes
Oil Resistant	No
Fire Resistant	No
FDA Approved	No

Special Characteristics:

Anti-Static and mark resistant. Good grip and surface calibration accuracy. For surface finishing machines, this belt offers a premium alternative to rougtop belts due to the carcass engineered for transverse stability and ability to apply precision finishing on the flat plane of the diamond cover.

*****All Values are nominal and subject to change without notice.*****

St. Louis, MO	Boise, ID	Charlotte, NC	Grand Prairie, TX	Philadelphia, PA	Sacramento, CA	Vancouver, WA	Beltservice Canada	Beltservice de Mexico
800-727-2358	800-423-4469	800-849-2358	800-727-2358	800-777-1314	800-289-2358	800-234-2358	877-210-7423	+52 55 53620434
314-344-8500	208-342-4681	704-949-2100	314-344-8555	215-295-1900	916-419-7191	360-567-4280	905-565-9217	+44 2980 3266

LIGHT DUTY SFMB

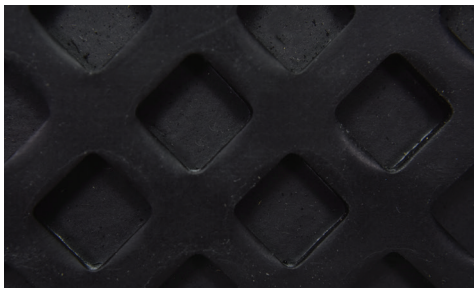
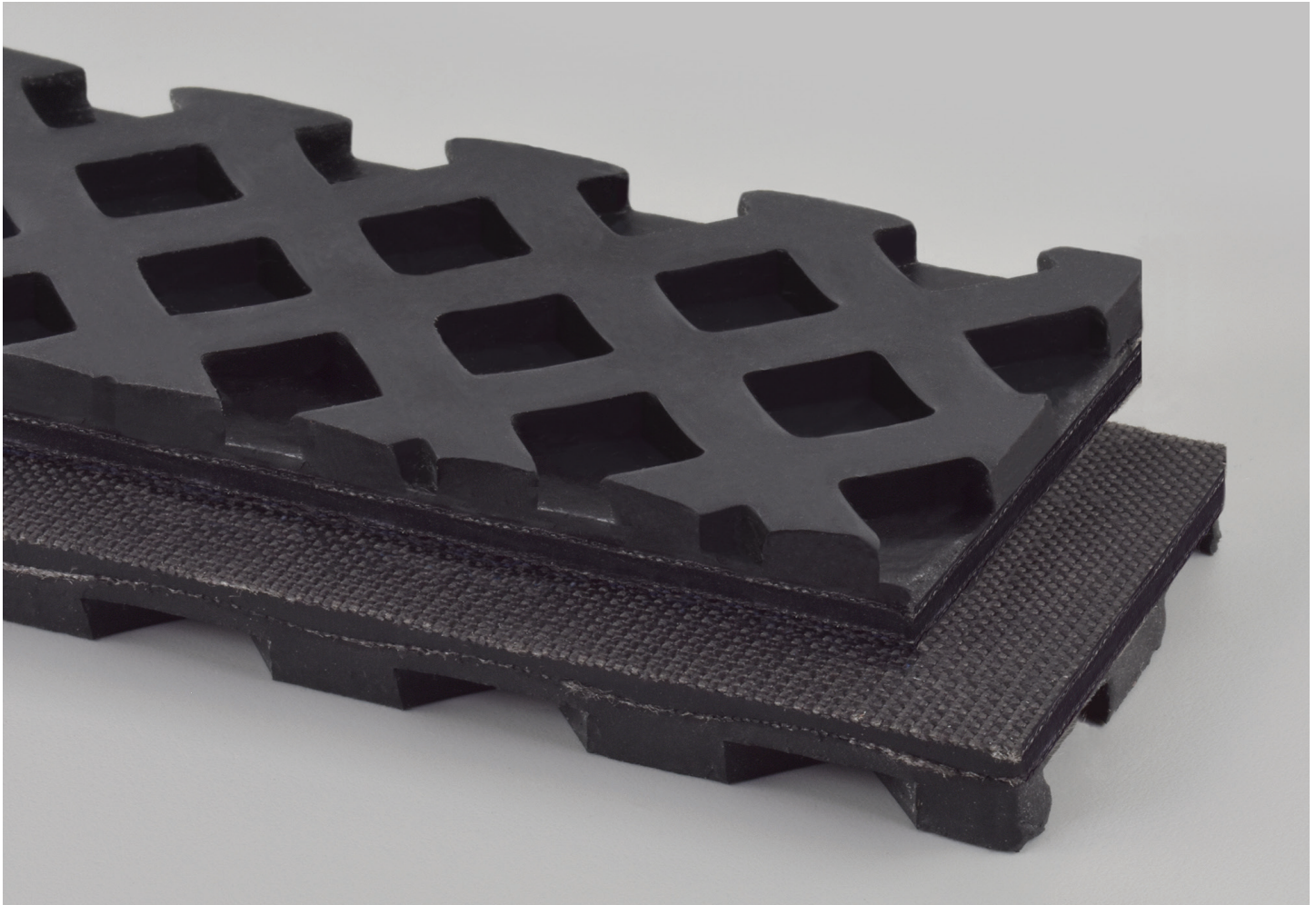
2 PLY 80 BLACK 57A 1/2IN DIAMOND X BARE AS

175

Catalog Number

49046

Part Number



Top Cover View



Bottom Cover View



Ply View