

**Catalog #** **139**
**Item number:** **30633**
**Description:**

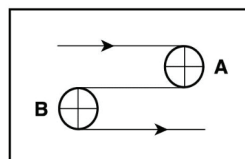
3 Ply CR135 Tan Wedgrip AS SFMB

**International Designation:**

E24/3 0/N31 TWG SBR AS

**Construction:**

Compound Top Cover	Tan Nitrile
Top Cover Thickness (in)	(4.24 mm) 0.1670 lbs/PIW
Top Cover Description	Wedgrip
Top Cover Shore	45
Compound Bottom Cover	Treated Duck
Bottom Cover Thickness (in)	(0.00 mm) 0.0000 in
Bottom Cover Description	Bare
Bottom Cover Shore	N/A
Number of Plies	3
Anti Static	Yes
Overall Gauge (in)	(7.87 mm) 0.3100 in
Unit Weight- lb/PIW	0.1208 lbs/PIW
Material Between Plies	Nitrile
Maximum Width (in)	72 in
Temperature Range (°F)- High	212 °F
Temperature Range (°F)- Low	-6 °F

**Pulley Diameter, Minimum**


A) Normal Flex (152.40 mm) 6.0000 in

B) Back Flex (304.80 mm) 12.0000 in

**Belt Strength:**

Pull for 1% Elongation (24 N/mm) 135 lbs/sq in

**Splice Instructions:**

Foil	No
Splice Process	Step Cold
Press Temperature (°F)	300 °F
Press Pressure (psi)	30 lbs/sq in

Note: Listed above is a guideline only. Every vulcanizer is different and will show different results. We recommend that you do a test splice with your press before attempting the actual belt splice.

**Other:**

Cross Rigid	Yes
Impression Top	Yes
Oil Resistant	Yes
Fire Resistant	No
FDA Approved	No

**Special Characteristics:**

The 139 belt has a special construction designed for SFMB (Surface Finishing Machine Belt) applications. This belt has a 3 ply highly cross rigid monofilament carcass that will maintain the integrity across the width and lay completely flat for sanding applications, the end result is NO EDGE CURL. The high friction positive diamond wedge grip profile is ideal for perforated vacuum sanding systems, top cover is non-marking and oil resistant with a low friction treated duck bottom fabric. Developed specifically for use on machines finishing wood and wood products.

\*\*\*\*\*All Values are nominal and subject to change without notice.\*\*\*\*\*

<b>St. Louis, MO</b> 800-727-2358 314-344-8500	<b>Boise, ID</b> 800-423-4469 208-342-4681	<b>Charlotte, NC</b> 800-849-2358 704-949-2100	<b>Grand Prairie, TX</b> 800-727-2358 314-344-8555	<b>Philadelphia, PA</b> 800-777-1314 215-295-1900	<b>Sacramento, CA</b> 800-289-2358 916-419-7191	<b>Vancouver, WA</b> 800-234-2358 360-567-4280	<b>Beltservice Canada</b> 877-210-7423 905-565-9217	<b>Beltservice de Mexico</b> +52 55 53620434 +44 2980 3266
--	--	--	--	---	---	--	---	--

# LIGHT DUTY SFMB

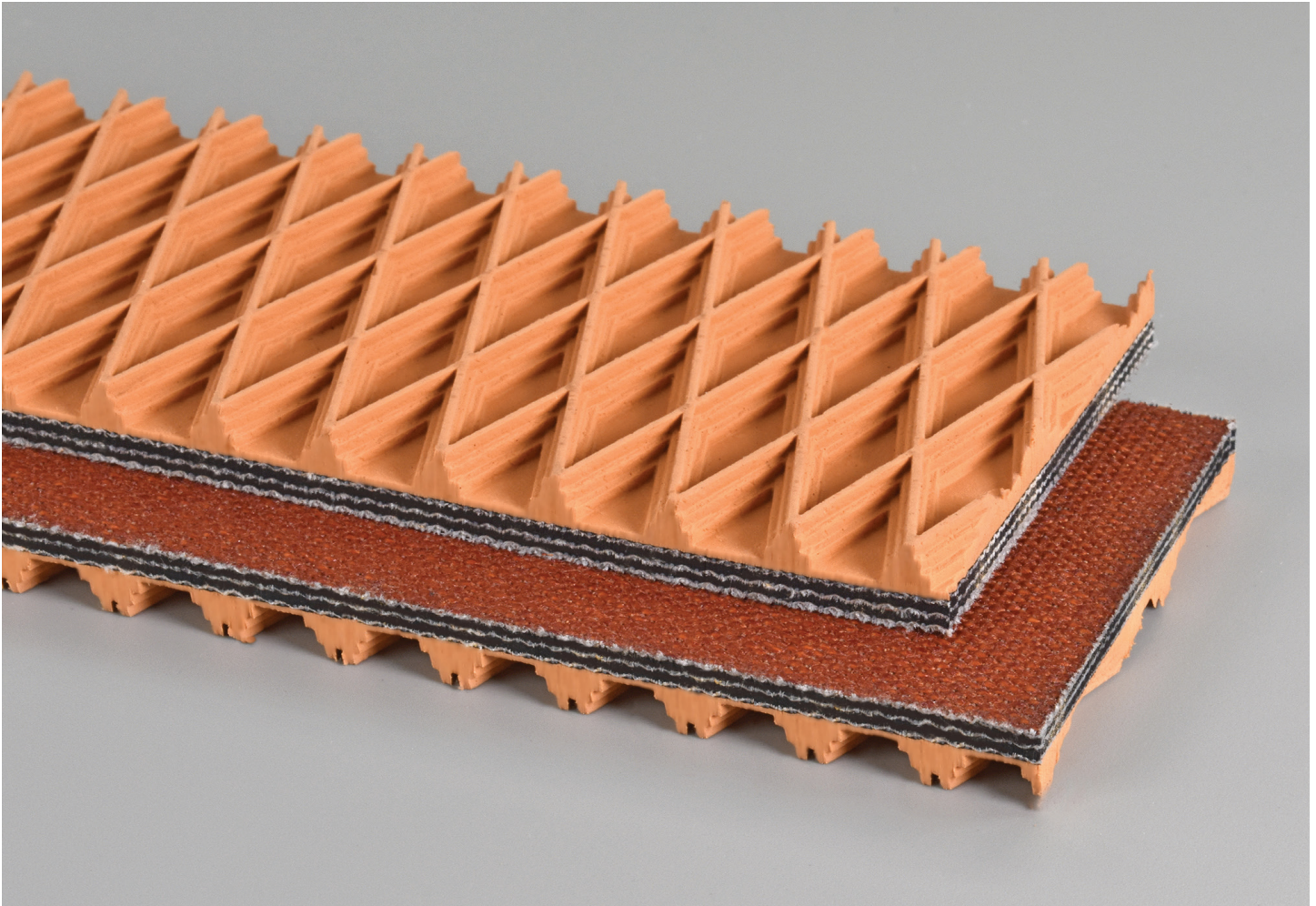
3 PLY CR135 TWG SFMB

**139**

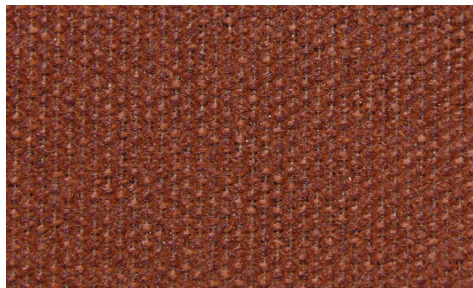
Catalog Number

**30633**

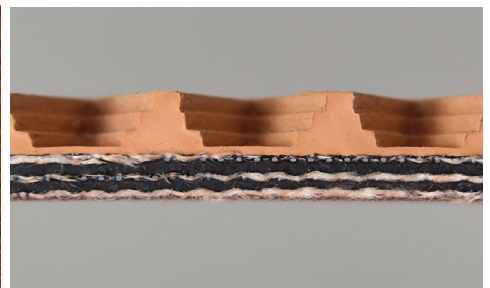
Part Number



Top Cover View



Bottom Cover View



Ply View



**BELTSERVICE**  
CORPORATION

[beltservice.com](http://beltservice.com)

REV 3/23