

Catalog # 136W
Item number: 10966
Description:

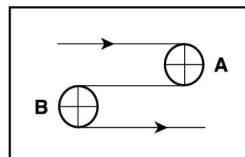
3 Ply CR135 WST AS SFMB

International Designation:

E24/3 0/N31 ST White AS

Construction:

Compound Top Cover	White Nitrile
Top Cover Thickness (in)	(3.18 mm) 0.1250 in
Top Cover Description	Smooth
Top Cover Shore	55
Compound Bottom Cover	Polyester
Bottom Cover Thickness (in)	(0.00 mm) 0.0000 in
Bottom Cover Description	Bare
Bottom Cover Shore	N/A
Number of Plies	3
Anti Static	No
Overall Gauge (in)	(6.60 mm) 0.2600 in
Unit Weight- lb/PIW	0.1401 lbs/PIW
Material Between Plies	Nitrile
Maximum Width (in)	72 in
Temperature Range (°F)- High	212 °F
Temperature Range (°F)- Low	20 °F

Pulley Diameter, Minimum


A) Normal Flex (152.40 mm) 6.0000 in

B) Back Flex (304.80 mm) 12.0000 in

Belt Strength:

Pull for 1% Elongation (24 N/mm) 135 lbs/sq in

Splice Instructions:

Foil	No
Splice Process	Step Cold
Press Temperature (°F)	300 °F
Press Pressure (psi)	30 lbs/sq in

Note: Listed above is a guideline only. Every vulcanizer is different and will show different results. We recommend that you do a test splice with your press before attempting the actual belt splice.

Other:

Cross Rigid	Yes
Impression Top	No
Oil Resistant	Yes
Fire Resistant	No
FDA Approved	No

Special Characteristics:

The 136W has a special 3 ply highly cross rigid construction designed for SFMB (Surface Finishing Machine Belt) applications. The belt features a high friction, non-marking, oil resistant cover and low friction bottom fabric. Developed specifically for use on machines finishing metal parts

*****All Values are nominal and subject to change without notice.*****

St. Louis, MO	Boise, ID	Charlotte, NC	Grand Prairie, TX	Philadelphia, PA	Sacramento, CA	Vancouver, WA	Beltservice Canada	Beltservice de Mexico
800-727-2358	800-423-4469	800-849-2358	800-727-2358	800-777-1314	800-289-2358	800-234-2358	877-210-7423	+52 55 53620434
314-344-8500	208-342-4681	704-949-2100	314-344-8555	215-295-1900	916-419-7191	360-567-4280	905-565-9217	+44 2980 3266

LIGHT DUTY SFMB

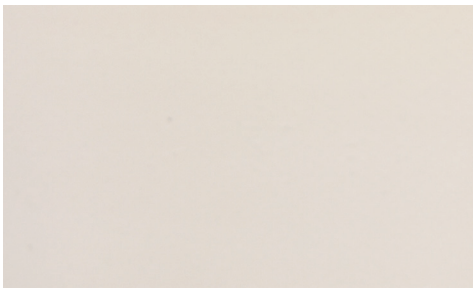
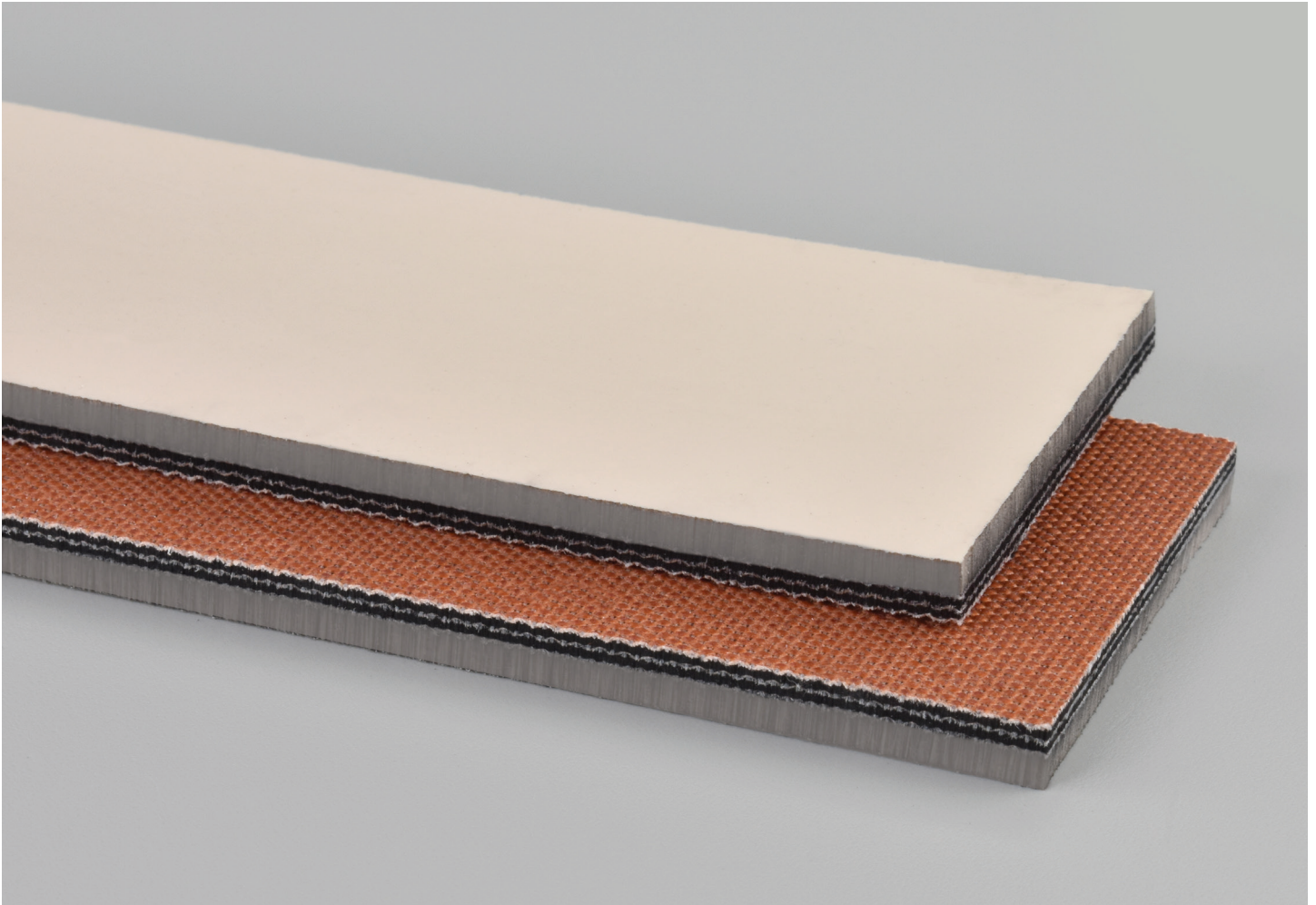
3 PLY CR135 WST SFMB

136W

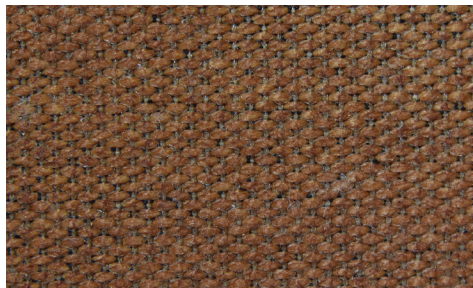
Catalog Number

10966

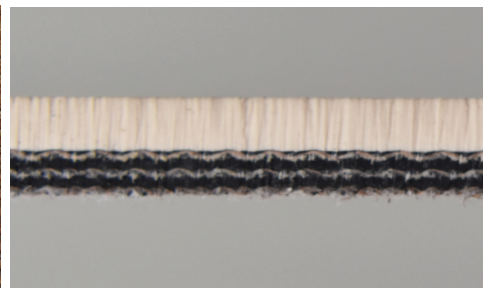
Part Number



Top Cover View



Bottom Cover View



Ply View



BELTSERVICE
CORPORATION

beltservice.com

REV 3/23