

Catalog # **16c**
Item number: **10204**
Description:

WPLP Solid Woven Polyester

International Designation:

N/A

Pulley Diameter, Minimum

Minimum Pulley Diameter 0.00 in

Belt Strength:

Tension Rating (PIW) 180 PIW

Construction:

Compound Top Cover None

Color White

Top Cover Thickness (in) (0.00 mm) 0.00 in

Top Cover Description Woven

Compound Bottom Cover None

Bottom Cover Thickness (in) (0.00 mm) 0.00 in

Bottom Cover Description Woven

Number of Plies 5

Overall Gauge (in) (5.84 mm) 7/32 in

Unit Weight- lb/PIW 0.0600 lbs/PIW

Carcass Type Interwoven Polyester

Compound None

Temperature Range (°F)- High 310 °F

Temperature Range (°F)- Low -60 °F

Splice Instructions:

Splice Step No

Splice Finger No

Other:

Static Conducting No

Cross Rigid No

High Heat No

Impression Top No

Oil Resistant No

Fire Resistant No

FDA Approved No

Suggested Fasteners:

Flexco Plate/Rivet N/A

Flexco Hinged N/A

Alligator Staple N/A

Clipper Lace N/A

Alligator Lace N/A

Special Characteristics:

These fabrics are used in pneumatic conveyors to transport fluidized dry bulk powders such as: cement, barite, silica, alumina and chemical or plastic resins. Like needled polyester fabrics, they are used for air gravity conveyors, silos, rail cars, barges, ships and tank trailers that are designed for the storage and transport of dry bulk powders.

*****All Values are nominal and subject to change without notice.*****

St. Louis, MO	Boise, ID	Charlotte, NC	Grand Prairie, TX	Philadelphia, PA	Sacramento, CA	Vancouver, WA	Beltservice Canada	Beltservice de Mexico
800-727-2358	800-423-4469	800-849-2358	800-727-2358	800-777-1314	800-289-2358	800-234-2358	877-210-7423	+52 55 53620434
314-344-8500	208-342-4681	704-949-2100	314-344-8555	215-295-1900	916-419-7191	360-567-4280	905-565-9217	+44 2980 3266

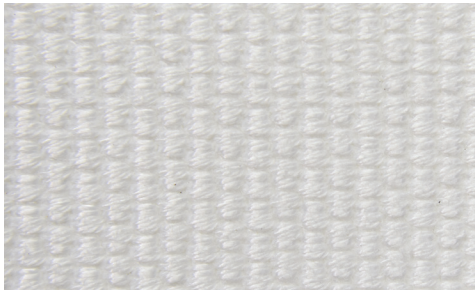
AIR PERMEABLE FABRIC
WPLP SOLID WOVEN POLYESTER

16c

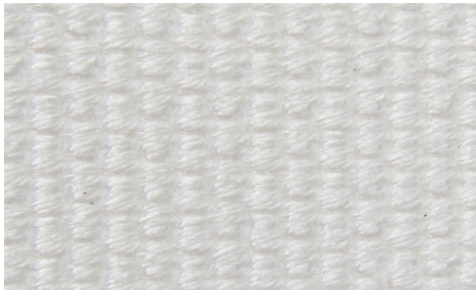
Catalog Number

10204

Part Number



Top Cover View



Bottom Cover View



Ply View



BELTSERVICE
CORPORATION

beltservice.com