

Catalog # **94**
Item number: **10906**
Description:
 PVC 150 Blk C x Brushed
International Designation:
 N/A

Pulley Diameter, Minimum

Minimum Pulley Diameter 3.00 in

Belt Strength:

Tension Rating (PIW) 150 PIW

Construction:

Compound Top Cover Black PVC
 Color Black

Top Cover Description Smooth

Compound Bottom Cover Woven Poly

Bottom Cover Description Brushed

Number of Plies 1

Overall Gauge (in) (3.97 mm) 5/32 in

Unit Weight- lb/PIW 0.0750 lbs/PIW

Carcass Type Interwoven Polyester

Compound Black PVC

Temperature Range (°F)- High 180 °F

Temperature Range (°F)- Low 0 °F

Splice Instructions:

Splice Step No
 Splice Finger Yes

Other:

Static Conducting No
 Cross Rigid No
 High Heat No
 Impression Top No
 Oil Resistant Yes
 Fire Resistant No
 FDA Approved No

Suggested Fasteners:

Flexco Plate/Rivet N/A
 Flexco Hinged N/A
 Alligator Staple #125
 Clipper Lace #2
 Alligator Lace #15

Special Characteristics:

Has proven to be the longest wearing, best performing, most problem free package handling belt available today. Economical, general purpose specifications ideal for a variety of slider bed, applications. Offer low stretch, high fastener holding ability and superior rip, tear, and gouge resistance

*****All Values are nominal and subject to change without notice.*****

St. Louis, MO 800-727-2358 314-344-8500	Boise, ID 800-423-4469 208-342-4681	Charlotte, NC 800-849-2358 704-949-2100	Grand Prairie, TX 800-727-2358 314-344-8555	Philadelphia, PA 800-777-1314 215-295-1900	Sacramento, CA 800-289-2358 916-419-7191	Vancouver, WA 800-234-2358 360-567-4280	Beltservice Canada 877-210-7423 905-565-9217	Beltservice de Mexic +52 55 53620434 +44 2980 3266
--	--	--	--	---	---	--	---	---

PVC GENERAL

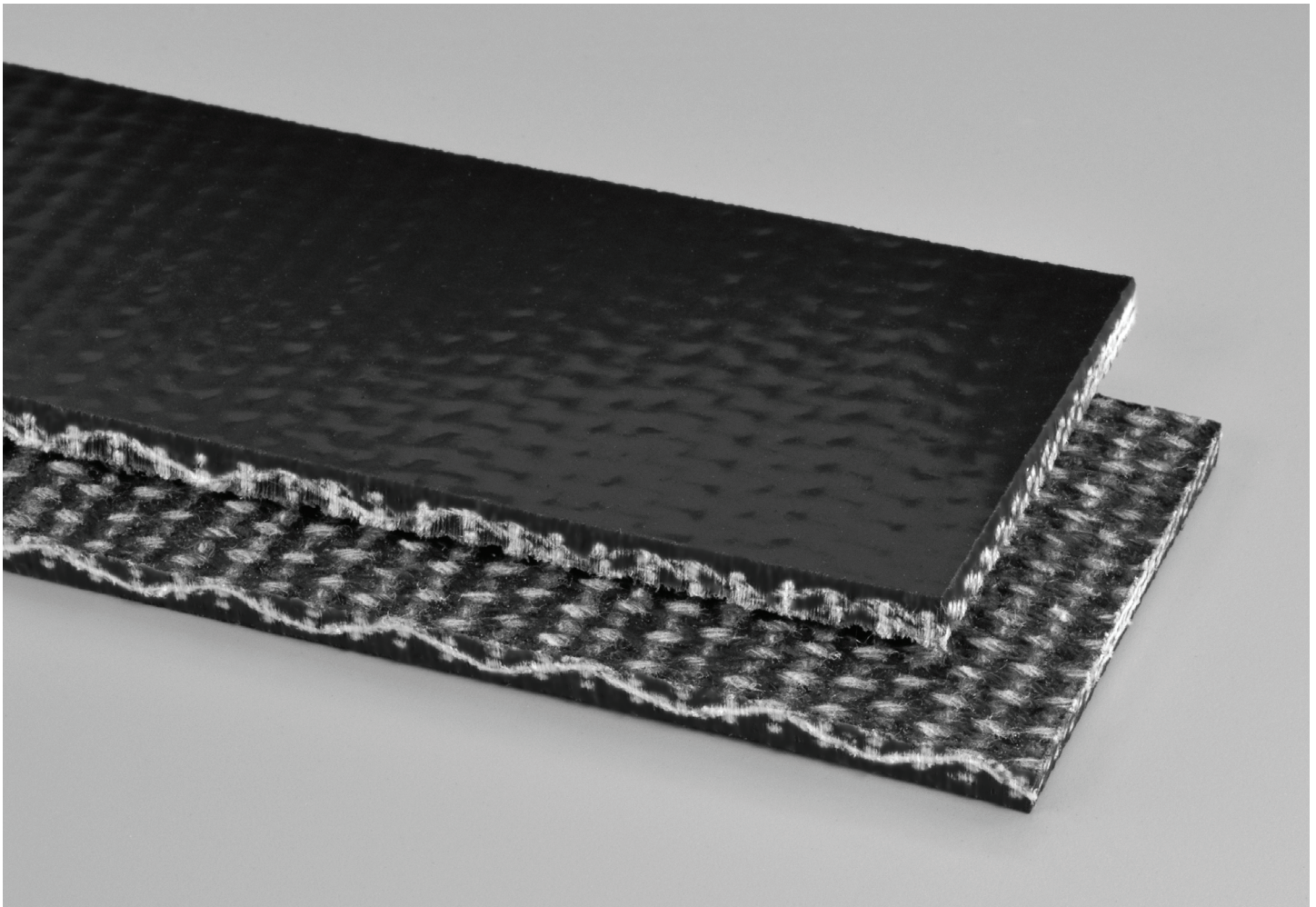
PVC 150 BLK C X BRUSHED

94

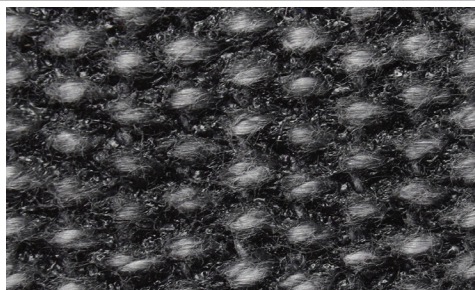
Catalog Number

10906

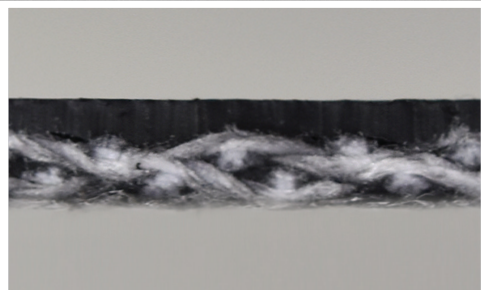
Part Number



Top Cover View



Bottom Cover View



Ply View



BELTSERVICE
CORPORATION

beltservice.com

REV 3/23