

**Catalog #**                      **92**  
**Item number:**                **10901**  
**Description:**  
 PVC 120 Blk FS x Brushed FR  
**International Designation:**  
 N/A

**Pulley Diameter, Minimum**

Minimum Pulley Diameter                      2.00 in

**Belt Strength:**

Tension Rating (PIW)                                      120 PIW

**Construction:**

Compound Top Cover                      Woven Poly  
 Color    Black

Top Cover Description                      Friction Surface

Compound Bottom Cover                      Woven Poly

Bottom Cover Description                      Brushed

Number of Plies                                      1

Overall Gauge (in)                      (2.78 mm) 7/64 in

Unit Weight- lb/PIW                      0.0600 lbs/PIW

Carcass Type                                      Interwoven Polyester

Compound    Black PVC

Temperature Range (°F)- High                      180 °F

Temperature Range (°F)- Low                      0 °F

**Splice Instructions:**

Splice Step    No  
 Splice Finger    Yes

**Other:**

Static Conducting                                      No  
 Cross Rigid    No  
 High Heat    No  
 Impression Top    No  
 Oil Resistant    Yes  
 Fire Resistant    Yes  
 FDA Approved    No

**Suggested Fasteners:**

Flexco Plate/Rivet                                      N/A  
 Flexco Hinged    N/A  
 Alligator Staple    #125  
 Clipper Lace    #1  
 Alligator Lace    #7

**Special Characteristics:**

Has proven to be the longest wearing, best performing, most problem free package handling belt available today. Economical, general purpose specifications ideal for a variety of slider bed, applications. Offer low stretch, high fastener holding ability and superior rip, tear, and gouge resistance. FS Coefficient of Friction, Steel: 0.24 Nominal. Brushed Coefficient of Friction, Steel: 0.23 Nominal

\*\*\*\*\*All Values are nominal and subject to change without notice.\*\*\*\*\*

<b>St. Louis, MO</b>	<b>Boise, ID</b>	<b>Charlotte, NC</b>	<b>Grand Prairie, TX</b>	<b>Philadelphia, PA</b>	<b>Sacramento, CA</b>	<b>Vancouver, WA</b>	<b>Beltservice Canada</b>	<b>Beltservice de Mexico</b>
800-727-2358	800-423-4469	800-849-2358	800-727-2358	800-777-1314	800-289-2358	800-234-2358	877-210-7423	+52 55 53620434
314-344-8500	208-342-4681	704-949-2100	314-344-8555	215-295-1900	916-419-7191	360-567-4280	905-565-9217	+44 2980 3266

# PVC GENERAL

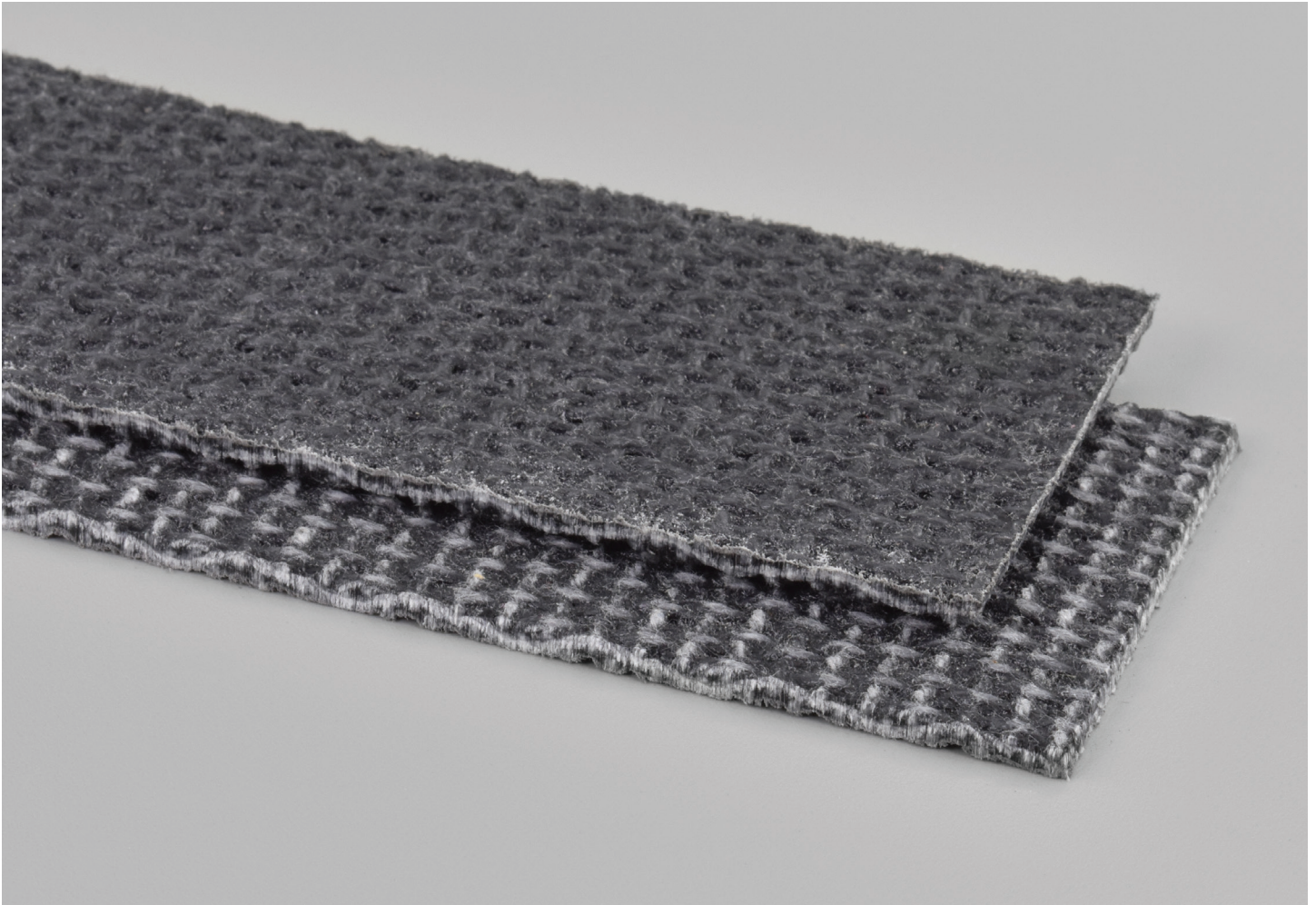
PVC 120 BLK FS X BRUSHED FR

**92**

Catalog Number

**10901**

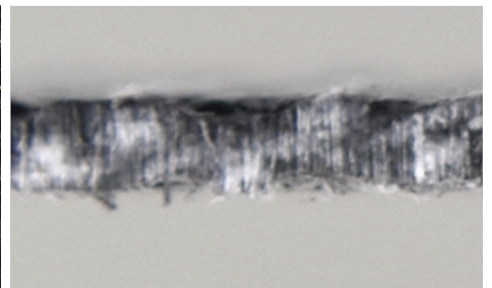
Part Number



Top Cover View



Bottom Cover View



Ply View



**BELTSERVICE**  
CORPORATION

[beltservice.com](http://beltservice.com)

REV 3/23