

Catalog # **77a**
Item number: **10498**
Description:

3 Ply 330 3/16in x 1/16in MOR/SC

International Designation:

N/A

Pulley Diameter, Minimum

Min. Pulley Dia. - Head @ 80 - 100% Tension 18.00 in

Min. Pulley Dia. - Head @ 60 - 79% Tension 16.00 in

Min. Pulley Dia. - Head @ 59% Tension or Below 12.00 in

Minimum Pulley Diameter- Tail 12.00 in

Construction:

Compound Top Cover Black MOR

Color Black

Top Cover Thickness (in) (4.83 mm) 3/16 in

Top Cover Description Smooth

Compound Bottom Cover Black MOR

Bottom Cover Thickness (in) (1.60 mm) 1/16 in

Bottom Cover Description Smooth

Number of Plies 3

Overall Gauge (in) (10.41 mm) 13/32 in

Unit Weight- lb/PIW 0.2130 lbs/PIW

Carcass Type Poly/Nylon

Compound Black MOR

Temperature Range (°F)- High 225 °F

Temperature Range (°F)- Low -25 °F

Splice Instructions:

Splice Step Size 8.00 in

Splice Process Step Hot

Other:

Static Conducting Yes

Cross Rigid No

High Heat No

Impression Top No

Oil Resistant Yes

Fire Resistant No

FDA Approved No

Suggested Fasteners:

Flexco Plate/Rivet #190/R5-1/2

Flexco Hinged #550

Alligator Staple N/A

Clipper Lace N/A

Alligator Lace N/A

Belt Strength:

Tension Rating (PIW) 330 PIW

Special Characteristics:

Medium oil resistant belt used to resist light traces of oils and terpenes. Widely used in the lumber, recycling and waste water industries. Can be used for some whole grains.

*****All Values are nominal and subject to change without notice.*****

St. Louis, MO	Boise, ID	Charlotte, NC	Grand Prairie, TX	Philadelphia, PA	Sacramento, CA	Vancouver, WA	Beltservice Canada	Beltservice de Mexic
800-727-2358	800-423-4469	800-849-2358	800-727-2358	800-777-1314	800-289-2358	800-234-2358	877-210-7423	+52 55 53620434
314-344-8500	208-342-4681	704-949-2100	314-344-8555	215-295-1900	916-419-7191	360-567-4280	905-565-9217	+44 2980 3266

OIL RESISTANT SC-MOR

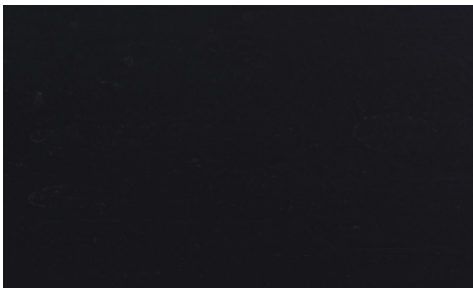
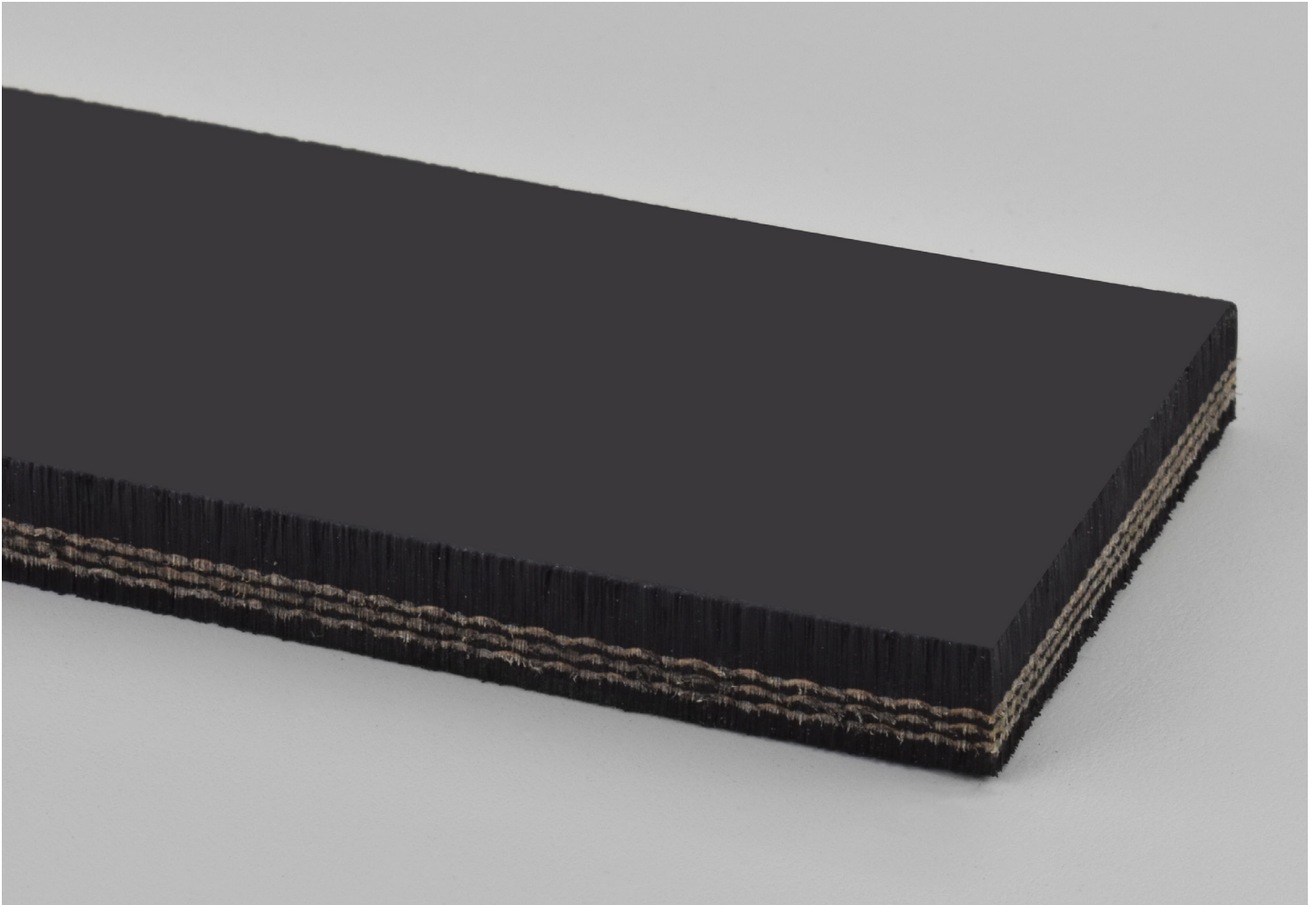
3 PLY 330 PIW 3/16 X 1/16 MOR/SC

77a

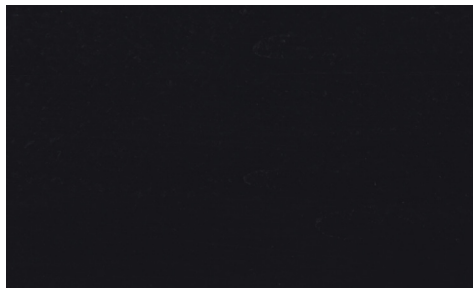
Catalog Number

10498

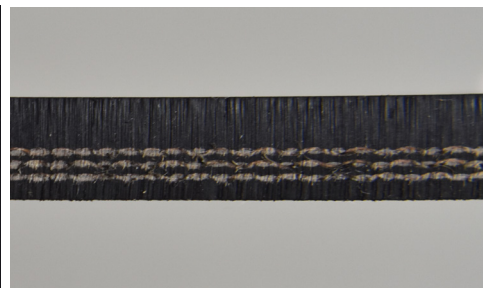
Part Number



Top Cover View



Bottom Cover View



Ply View



BELTSERVICE
CORPORATION

beltservice.com

REV 3/23