

| | | | |
|---|--|---|--|
| Catalog # 80f Item number: 47777 Description: 3 Ply 600 1/4in x Bare MOR International Designation: N/A | | Pulley Diameter, Minimum Min. Pulley Dia. - Head @ 80 - 100% Tension 24.00 in Min. Pulley Dia. - Head @ 60 - 79% Tension 20.00 in Min. Pulley Dia. - Head @ 59% Tension or Below 18.00 in Minimum Pulley Diameter- Tail 16.00 in | |
| Construction: Compound Top Cover Black MOR Color Black Top Cover Thickness (in) (6.35 mm) 1/4 in Top Cover Description Smooth Compound Bottom Cover None Bottom Cover Thickness (in) (0.00 mm) 0.00 in Bottom Cover Description Bare Number of Plies 3 Overall Gauge (in) (12.70 mm) 1/2 in Unit Weight- lb/PIW 0.2450 lbs/PIW Carcass Type Poly/Nylon Compound Black MOR Temperature Range (°F)- High 225 °F Temperature Range (°F)- Low -25 °F | | Splice Instructions: Splice Step Size 16.00 in Splice Process Step Hot | |
| Belt Strength: Tension Rating (PIW) 600 PIW | | Other: Static Conducting No Cross Rigid No High Heat No Impression Top No Oil Resistant Yes Fire Resistant No FDA Approved No | |
| | | Suggested Fasteners: Flexco Plate/Rivet BR-10/R5-1/2 Flexco Hinged N/A Alligator Staple N/A Clipper Lace N/A Alligator Lace N/A | |

| |
|---|
| Special Characteristics: This high strength, abuse resistant MOR belt with excellent fastener holding ability provides an outstanding service life. |
|---|

*****All Values are nominal and subject to change without notice.*****

| | | | | | | | | |
|--|--|--|--|---|---|--|---|---|
| St. Louis, MO 800-727-2358 314-344-8500 | Boise, ID 800-423-4469 208-342-4681 | Charlotte, NC 800-849-2358 704-949-2100 | Grand Prairie, TX 800-727-2358 314-344-8555 | Philadelphia, PA 800-777-1314 215-295-1900 | Sacramento, CA 800-289-2358 916-419-7191 | Vancouver, WA 800-234-2358 360-567-4280 | Beltservice Canada 877-210-7423 905-565-9217 | Beltservice de Mexic +52 55 53620434 +44 2980 3266 |
|--|--|--|--|---|---|--|---|---|

OIL RESISTANT MOR

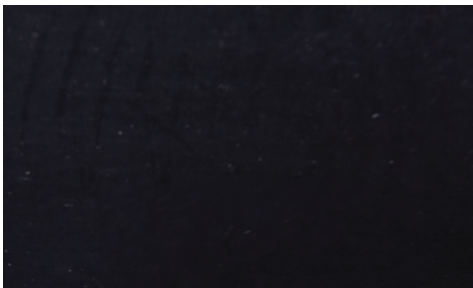
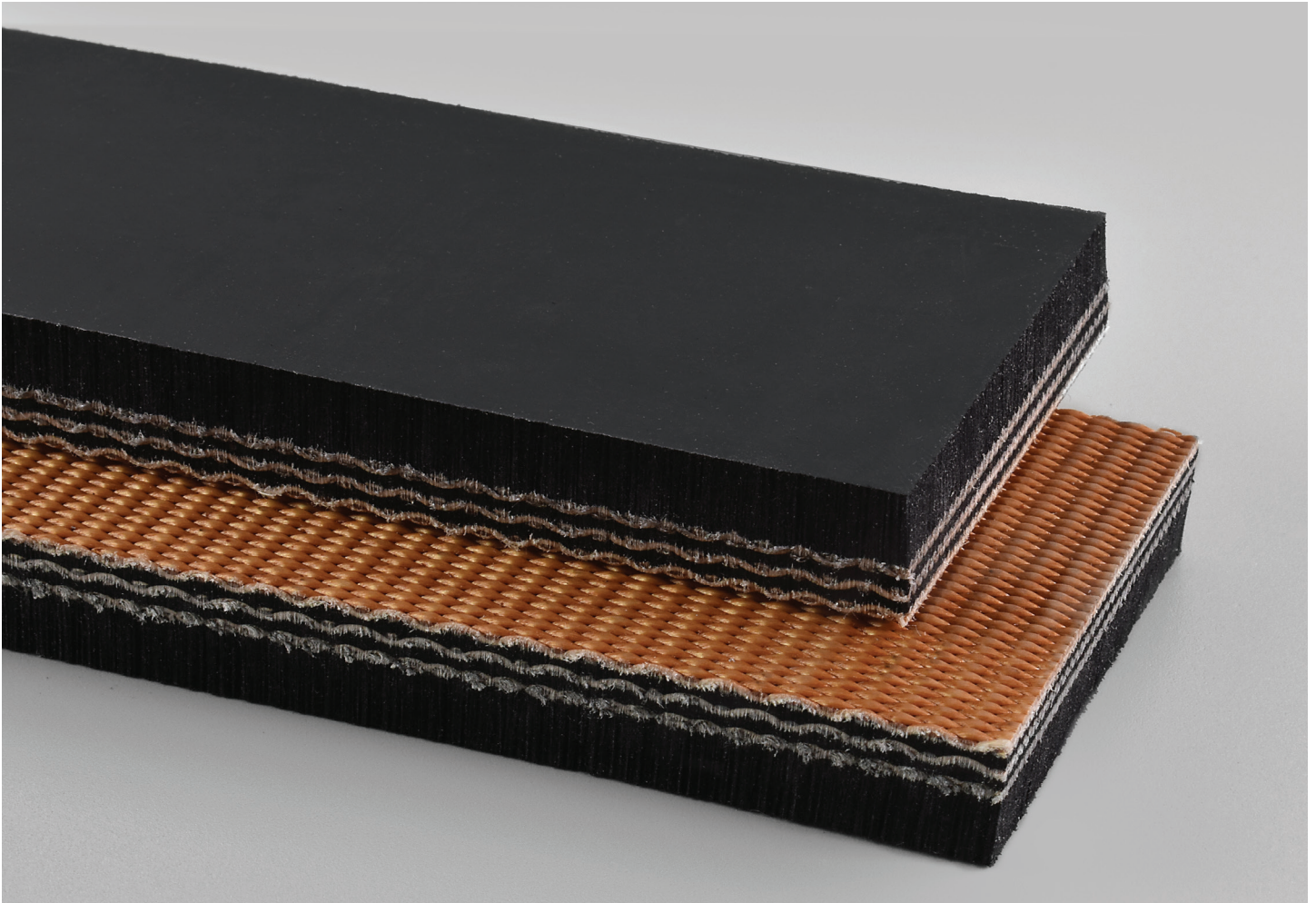
3 PLY 600 1/4IN X BARE MOR

80f

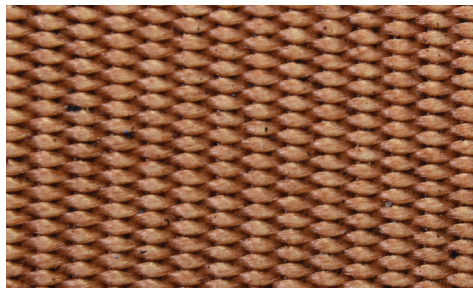
Catalog Number

47777

Part Number



Top Cover View



Bottom Cover View



Ply View



BELTSERVICE
CORPORATION

beltservice.com

REV 3/23