

**Catalog #**                      **53c**
**Item number:**                **10448**
**Description:**

2 Ply 220 3/16in x Bare MOR

**International Designation:**

N/A

**Pulley Diameter, Minimum**

Min. Pulley Dia. - Head @ 80 - 100% Tension                      14.00 in

Min. Pulley Dia. - Head @ 60 - 79% Tension                      12.00 in

Min. Pulley Dia. - Head @ 59% Tension or Below                      10.00 in

Minimum Pulley Diameter- Tail                      10.00 in

**Construction:**

Compound Top Cover                      Black MOR

Color                      Black

Top Cover Thickness (in)                      (4.76 mm) 3/16 in

Top Cover Description                      Smooth

Compound Bottom Cover                      Polyester

Bottom Cover Thickness (in)                      (0.00 mm) 0.00 in

Bottom Cover Description                      Bare

Number of Plies                      2

Overall Gauge (in)                      (7.37 mm) 9/32 in

Unit Weight- lb/PIW                      0.1700 lbs/PIW

Carcass Type                      Poly/Nylon

Compound                      Black MOR

Temperature Range (°F)- High                      225 °F

Temperature Range (°F)- Low                      -25 °F

**Splice Instructions:**

Splice Step Size                      8.00 in

Splice Process                      Step Hot

**Other:**

Static Conducting                      No

Cross Rigid                      No

High Heat                      No

Impression Top                      No

Oil Resistant                      Yes

Fire Resistant                      No

FDA Approved                      No

**Suggested Fasteners:**

Flexco Plate/Rivet                      #140/R5

Flexco Hinged                      #375 or 550

Alligator Staple                      N/A

Clipper Lace                      N/A

Alligator Lace                      N/A

**Belt Strength:**

Tension Rating (PIW)                      220 PIW

**Special Characteristics:**

This belt is designed for medium-duty uses. Ideal for slider bed applications. It features a MOR compound for applications where some oil or wood terpenes are present.

\*\*\*\*\*All Values are nominal and subject to change without notice.\*\*\*\*\*

<b>St. Louis, MO</b>	<b>Boise, ID</b>	<b>Charlotte, NC</b>	<b>Grand Prairie, TX</b>	<b>Philadelphia, PA</b>	<b>Sacramento, CA</b>	<b>Vancouver, WA</b>	<b>Beltservice Canada</b>	<b>Beltservice de Mexic</b>
800-727-2358	800-423-4469	800-849-2358	800-727-2358	800-777-1314	800-289-2358	800-234-2358	877-210-7423	+52 55 53620434
314-344-8500	208-342-4681	704-949-2100	314-344-8555	215-295-1900	916-419-7191	360-567-4280	905-565-9217	+44 2980 3266

# OIL RESISTANT MOR

2 PLY 220 PIW 3/16 X BARE MOR

**53c**

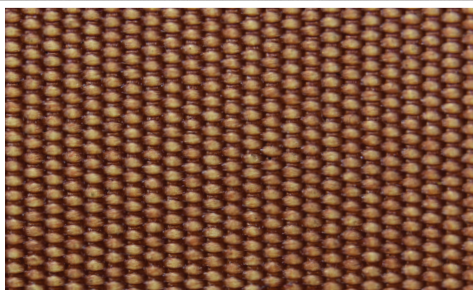
Catalog Number

**10448**

Part Number



Top Cover View



Bottom Cover View



Ply View



**BELTSERVICE**  
CORPORATION

[beltservice.com](http://beltservice.com)

REV 3/23