

Catalog # 80a Item number: 10536 Description: 4 Ply 440 3/8in x 3/32in International Designation: N/A		Pulley Diameter, Minimum Min. Pulley Dia. - Head @ 80 - 100% Tension 24.00 in Min. Pulley Dia. - Head @ 60 - 79% Tension 20.00 in Min. Pulley Dia. - Head @ 59% Tension or Below 16.00 in Minimum Pulley Diameter- Tail 16.00 in	
Construction: Compound Top Cover Black SBR Color Black Top Cover Thickness (in) (9.53 mm) 3/8 in Top Cover Description Smooth Compound Bottom Cover Black SBR Bottom Cover Thickness (in) (2.38 mm) 3/32 in Bottom Cover Description Smooth Number of Plies 4 Overall Gauge (in) (17.53 mm) 11/16 in Unit Weight- lb/PIW 0.3440 lbs/PIW Carcass Type Poly/Nylon Compound Black SBR Temperature Range (°F)- High 225 °F Temperature Range (°F)- Low -25 °F		Splice Instructions: Splice Step Size 8.00 in Splice Process Step Hot	
		Other: Static Conducting No Cross Rigid No High Heat No Impression Top No Oil Resistant No Fire Resistant No FDA Approved No	
Belt Strength: Tension Rating (PIW) 440 PIW		Suggested Fasteners: Flexco Plate/Rivet BR-10/R6 Flexco Hinged N/A Alligator Staple N/A Clipper Lace N/A Alligator Lace N/A	

Special Characteristics:

This belt offers high strength and impact resistance, coupled with abrasion resistance and long flex life. Used primarily on high-tension conveyors with long centers or in abusive situations.

***** All Values are nominal and subject to change without notice. *****

St. Louis, MO 800-727-2358 314-344-8500	Boise, ID 800-423-4469 208-342-4681	Charlotte, NC 800-849-2358 704-949-2100	Grand Prairie, TX 800-727-2358 314-344-8555	Philadelphia, PA 800-777-1314 215-295-1900	Sacramento, CA 800-289-2358 916-419-7191	Vancouver, WA 800-234-2358 360-567-4280	Beltservice Canada 877-210-7423 905-565-9217	Beltservice de Mexic +52 55 53620434 +44 2980 3266
--	--	--	--	---	---	--	---	---

GRADE 2

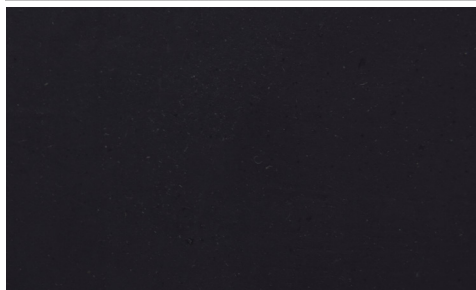
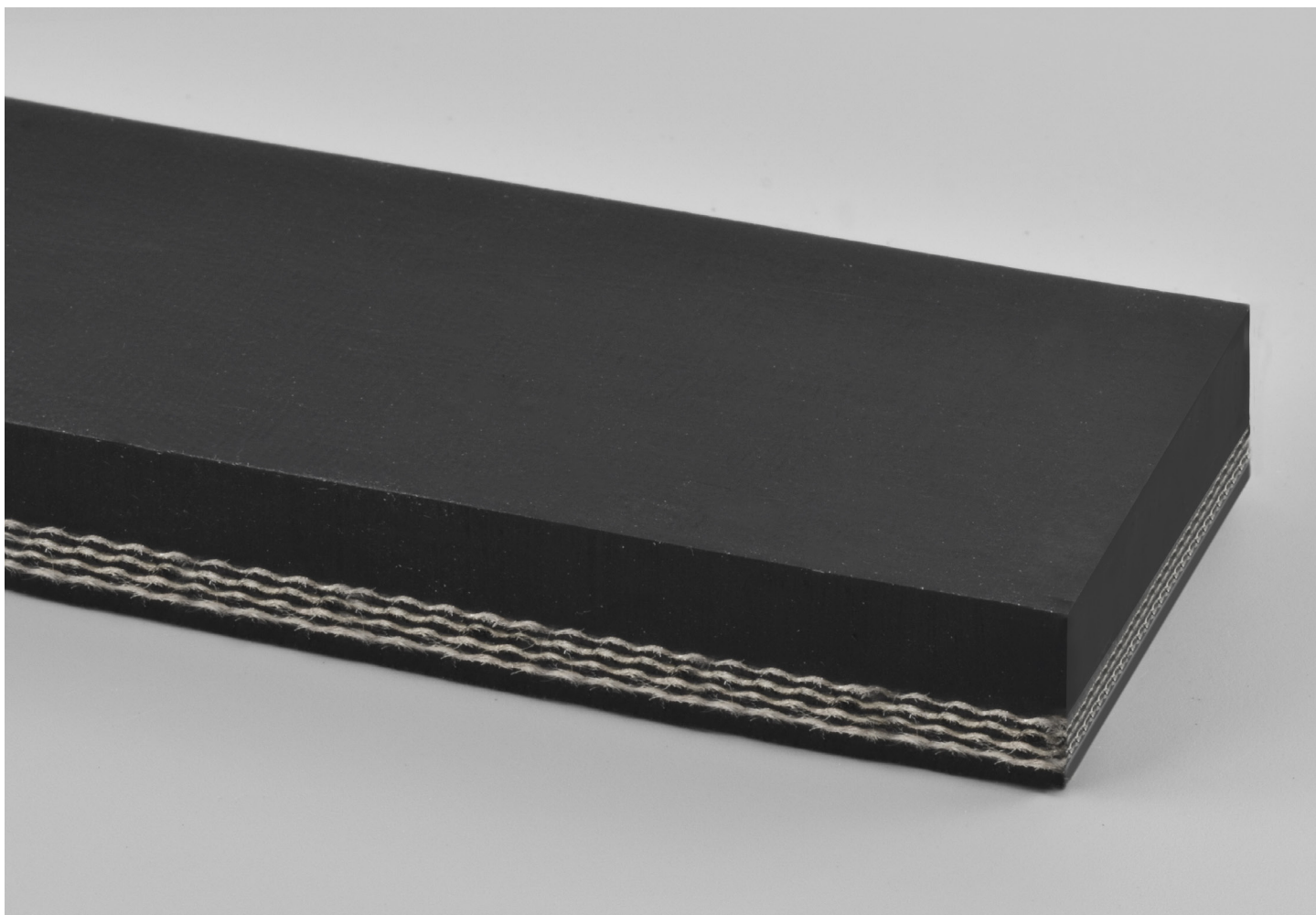
4 PLY 440 PIW 3/8 X 3/32

80a

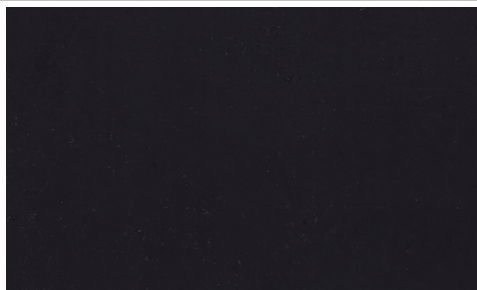
Catalog Number

10536

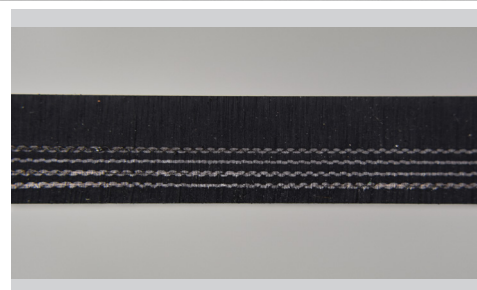
Part Number



Top Cover View



Bottom Cover View



Ply View



BELTSERVICE
CORPORATION

beltservice.com

REV 3/23