

Catalog # 79XT
Item number: 50232
Description:

3 Ply 170 7/16in Grey Diamond x Bare

International Designation:

TED300/3 PA50 SP213

Pulley Diameter, Minimum

Min. Pulley Dia. - Head @ 80 - 100% Tension	14.00 in
Min. Pulley Dia. - Head @ 60 - 79% Tension	12.00 in
Min. Pulley Dia. - Head @ 59% Tension or Below	8.00 in
Minimum Pulley Diameter- Tail	6.00 in

Construction:

Compound Top Cover	Grey NR/BR
Color	Gray
Top Cover Thickness (in)	(11.00 mm) 27/64 in
Top Cover Description	Grey 2" x 3" Diamond
Compound Bottom Cover	None
Bottom Cover Thickness (in)	(0.00 mm) 0.00 in
Bottom Cover Description	Bare
Number of Plies	3
Overall Gauge (in)	(14.99 mm) 37/64 in
Unit Weight- lb/PIW	0.3260 lbs/PIW
Carcass Type	Polyester
Compound	Black Grade 1
Temperature Range (°F)- High	200 °F
Temperature Range (°F)- Low	-40 °F

Splice Instructions:

Splice Step Size	8.00 in
Splice Process	Step Hot

Other:

Static Conducting	No
Cross Rigid	No
High Heat	No
Impression Top	Yes
Oil Resistant	No
Fire Resistant	No
FDA Approved	No

Suggested Fasteners:

Flexco Plate/Rivet	N/A
Flexco Hinged	N/A
Alligator Staple	#125
Clipper Lace	#1
Alligator Lace	#15

Belt Strength:

Tension Rating (PIW)	170 PIW
----------------------	---------

Special Characteristics:

Non-Marking. Good grip and abrasion resistance. Shore A 50 durometer maintains long-lasting grip for planer outfeed systems and light incline applications. Cold Temp -40C

*****All Values are nominal and subject to change without notice.*****

St. Louis, MO 800-727-2358 314-344-8500	Boise, ID 800-423-4469 208-342-4681	Charlotte, NC 800-849-2358 704-949-2100	Grand Prairie, TX 800-727-2358 314-344-8555	Philadelphia, PA 800-777-1314 215-295-1900	Sacramento, CA 800-289-2358 916-419-7191	Vancouver, WA 800-234-2358 360-567-4280	Beltservice Canada 877-210-7423 905-565-9217	Beltservice de Mexic +52 55 53620434 +44 2980 3266
--	--	--	--	---	---	--	---	---

GRADE 2

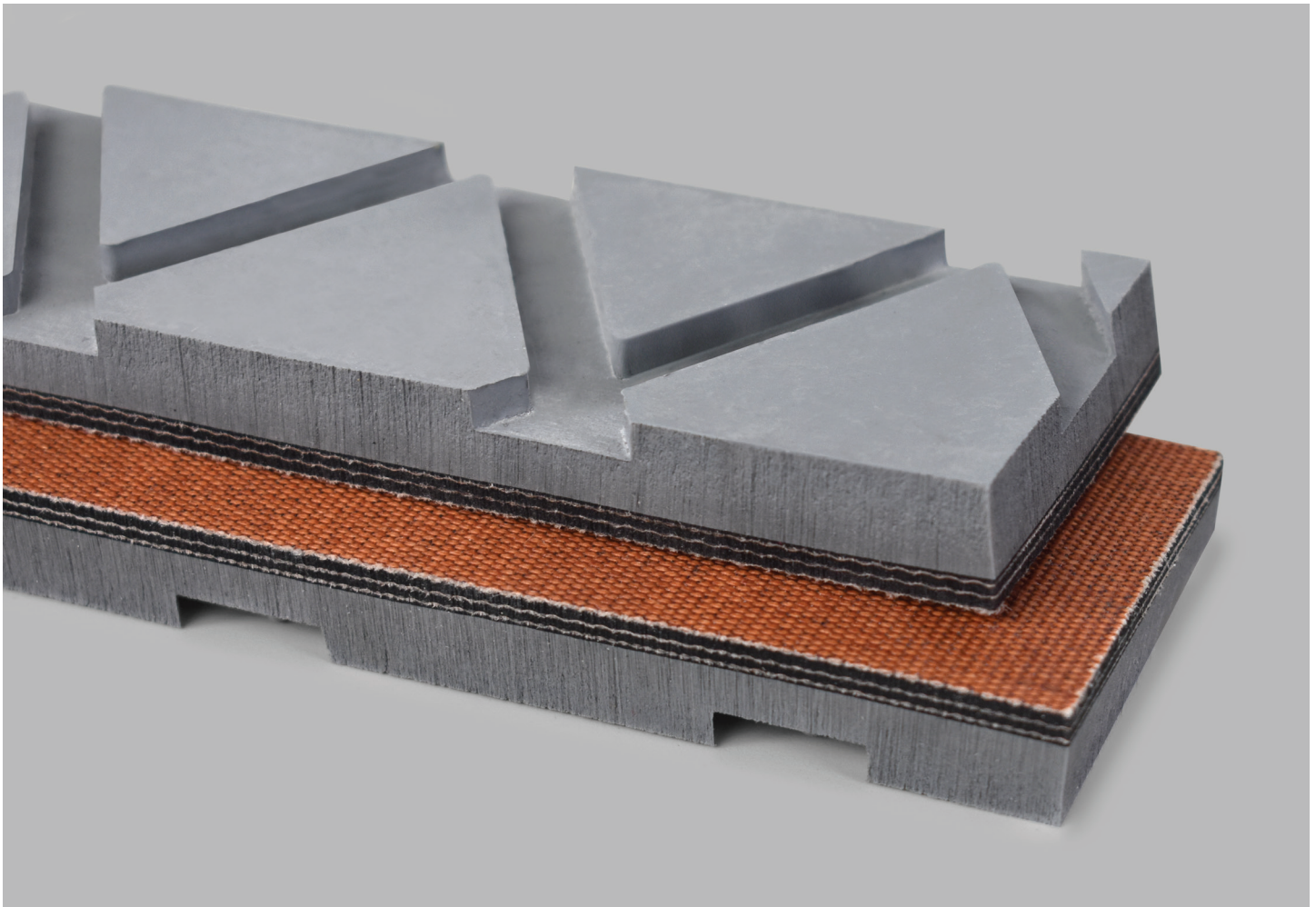
3 PLY 170 7/16 GREY DIAMOND X BARE

79xt

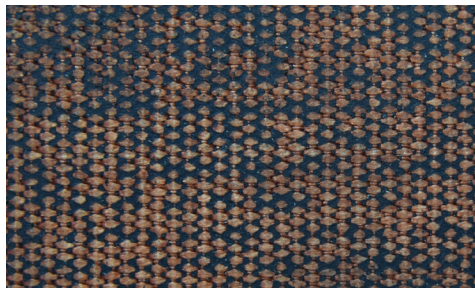
Catalog Number

50232

Part Number



Top Cover View



Bottom Cover View



Ply View