

Catalog # **70**
Item number: **10406**
Description:
 2 Ply 150 1/32in x 1/32in
International Designation:
 N/A

Pulley Diameter, Minimum

Min. Pulley Dia. - Head @ 80 - 100% Tension	6.00 in
Min. Pulley Dia. - Head @ 60 - 79% Tension	6.00 in
Min. Pulley Dia. - Head @ 59% Tension or Below	6.00 in
Minimum Pulley Diameter- Tail	6.00 in

Construction:

Compound Top Cover	Black SBR
Color	Black
Top Cover Thickness (in)	(0.80 mm) 1/32 in
Top Cover Description	Smooth
Compound Bottom Cover	Black SBR
Bottom Cover Thickness (in)	(0.80 mm) 1/32 in
Bottom Cover Description	Smooth
Number of Plies	2
Overall Gauge (in)	(3.97 mm) 5/32 in
Unit Weight- lb/PIW	0.0880 lbs/PIW
Carcass Type	Poly/Nylon
Compound	Black SBR
Temperature Range (°F)- High	225 °F
Temperature Range (°F)- Low	-25 °F

Splice Instructions:

Splice Step Size	8.00 in
Splice Process	Step Hot

Other:

Static Conducting	No
Cross Rigid	No
High Heat	No
Impression Top	No
Oil Resistant	No
Fire Resistant	No
FDA Approved	No

Suggested Fasteners:

Flexco Plate/Rivet	N/A
Flexco Hinged	N/A
Alligator Staple	#125
Clipper Lace	N/A
Alligator Lace	N/A

Belt Strength:

Tension Rating (PIW)	150 PIW
----------------------	---------

Special Characteristics:

This belt is compounded to provide excellent abrasion resistance and flex life and is the best buy for the majority of conveyor belt applications. Its high-tension synthetic fabrics result in minimum stretch, great fastener holding ability, impact resistance and the highest adhesion between plies and cover.

*****All Values are nominal and subject to change without notice.*****

St. Louis, MO 800-727-2358 314-344-8500	Boise, ID 800-423-4469 208-342-4681	Charlotte, NC 800-849-2358 704-949-2100	Grand Prairie, TX 800-727-2358 314-344-8555	Philadelphia, PA 800-777-1314 215-295-1900	Sacramento, CA 800-289-2358 916-419-7191	Vancouver, WA 800-234-2358 360-567-4280	Beltservice Canada 877-210-7423 905-565-9217	Beltservice de Mexic +52 55 53620434 +44 2980 3266
------------------------------------------------------	--------------------------------------------------	------------------------------------------------------	----------------------------------------------------------	---------------------------------------------------------	-------------------------------------------------------	------------------------------------------------------	-----------------------------------------------------------	-----------------------------------------------------------------

GRADE 2

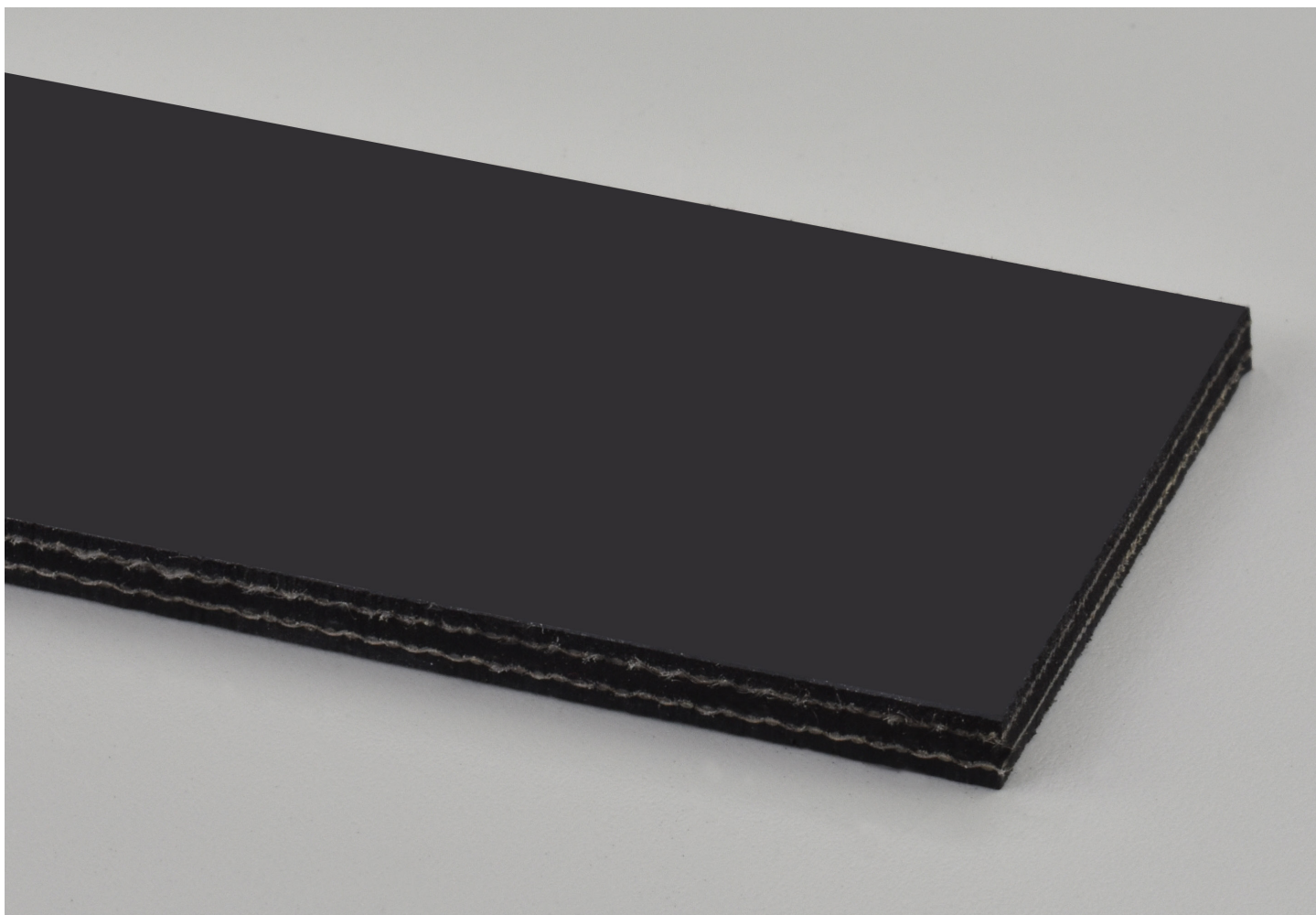
2 PLY 150 PIW 1/32 X 1/32

70

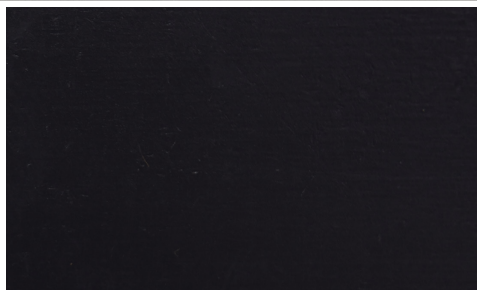
Catalog Number

10406

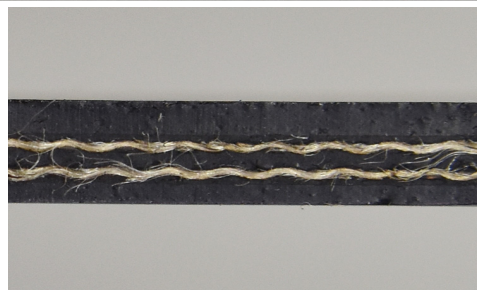
Part Number



Top Cover View



Bottom Cover View



Ply View



BELTSERVICE
CORPORATION

beltservice.com

REV 3/23