

**FABFLEX**<sup>®</sup>  
A DIVISION OF BELTSERVICE CORPORATION

**FABFLEX**<sup>®</sup>



*A PROBLEM SOLVER FOR TOUGH APPLICATIONS*



**BELTSERVICE**  
CORPORATION

# INTEGRALLY MOLDED CLEAT PATTERNS



## FABCLIMB

ABRASION RESISTANT CLEATS WITH "Y" CENTER PATTERN



- Cleats molded into belt cover
- No cleat separation
- Increased flexibility
- Excellent abrasion resistance
- Strong fastener holding ability
- Inclines up to 45 degrees

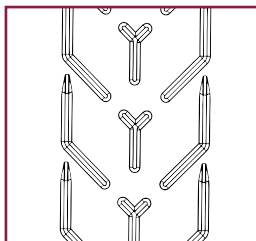
### CLEAT SPECIFICATIONS

Height	1-1/4"
Thickness	3/4" Tapered to 3/8"
Spacing	12" and 13" Centers
Type	Center Y Cleat
Cover Hardness	45 ± 5 (Shore A)

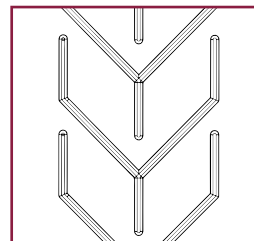
### BELT SPECIFICATIONS

Base Fabric	Synthetic
Cover Compound	SBR
Temp. Range	-20° / 180°F
Min. Pulley Dia.	Per Application
Working Strength	225 lbs

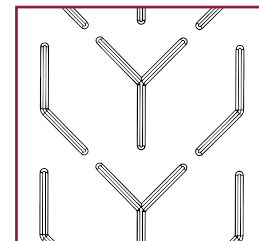
### 3 STYLES AVAILABLE



17" Pattern



23" Pattern



31" Pattern

## BIGHORN

SMOOTH, RELIABLE PRODUCT DELIVERY



### CLEAT SPECIFICATIONS

Height	3/4" (Rounded Top)
Thickness	3/4"
Spacing	9" Centers
Type	Parallel Overlap
Cover Hardness	60 ± 5 (Shore A)

### BELT SPECIFICATIONS

Base Fabric	Synthetic
Cover Compound	SBR
Temp. Range	-20 / 180°F
Min Pulley Dia.	8"
Working Strength	150 - 400 lbs

## BULLHORN

*MAINTAINS CONSTANT CONTACT WITH RETURN IDLERS*



### CLEAT SPECIFICATIONS

Height	1/2"
Thickness	1/2" (Square)
Spacing	6" Centers
Type	Parallel Overlap
Cover Hardness	60 ± 5 (Shore A)

### BELT SPECIFICATIONS

Base Fabric	Synthetic
Cover Compound	SBR
Temp. Range	-20 / 180°F
Min. Pulley Dia.	8"
Working Strength	150 - 400 lbs

## FABLIFT

*EASILY MOVES LARGE ROCK & RECYCLED ASPHALT*



### CLEAT SPECIFICATIONS

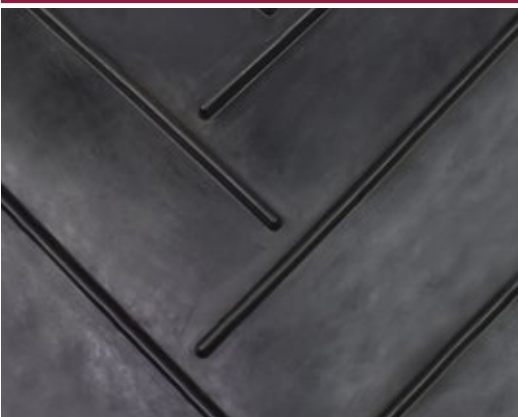
Height	1" (Square)
Thickness	1"
Spacing	10" Centers
Type	Parallel Overlap
Cover Hardness	60 ± 5 (Shore A)

### BELT SPECIFICATIONS

Base Fabric	Synthetic
Cover Compound	SBR
Temp. Range	-20 / 180°F
Min. Pulley Dia.	8"
Working Strength	150 - 400 lbs

## LONGHORN

*DESIGNED TO HANDLE HEAVY AND WET MATERIALS*



### CLEAT SPECIFICATIONS

Height	1"
Thickness	3/4" - 7/16" Gumdrop
Spacing	12" Centers
Type	Staggered Herringbone
Cover Hardness	60 ± 5 (Shore A)

### BELT SPECIFICATIONS

Base Fabric	Synthetic
Cover Compound	SBR
Temp. Range	-20 / 180°F
Min Pulley Dia.	8"
Working Strength	150 - 400 lbs

# FABTOUGH

LONGER PERFORMANCE AND EXTENDED SERVICE LIFE

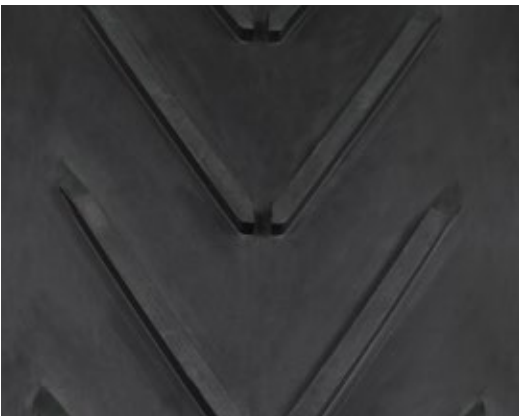


## FEATURES & BENEFITS

- Greater Belt Strength
- Decreased Belt Stretch
- Wear Resistance
- Lower Cost
- Less Replacement Labor
- Increased Productivity
- Less Down Time
- Cleats Guaranteed To Never Separate

# STONE SLINGER

ACCURACY FOR HARD TO REACH AREAS WITH FOCUS ON DESIGN



## CLEAT SPECIFICATIONS

Height	1/2"
Thickness	1/2"
Spacing	6" Centers
Type	Open Chevron
Cover Hardness	60 ± 5 (Shore A)

## BELT SPECIFICATIONS

Base Fabric	Synthetic
Cover Compound	SBR
Temp. Range	-20 / 180°F
Min. Pulley Dia.	8"
Working Strength	150 - 400 lbs

# FABFLEX®

A DIVISION OF BELTSERVICE CORPORATION

Compatible with Top Manufacturers, Including:

Roadtec | Wirtgen | Caterpillar | CMI | Bomag | Dynapac



4143 Rider Trail North | Earth City, MO 63045  
314-344-8500 | 800-727-2358 | Fax: 314-344-8511  
beltservice.com | info@beltservice.com

