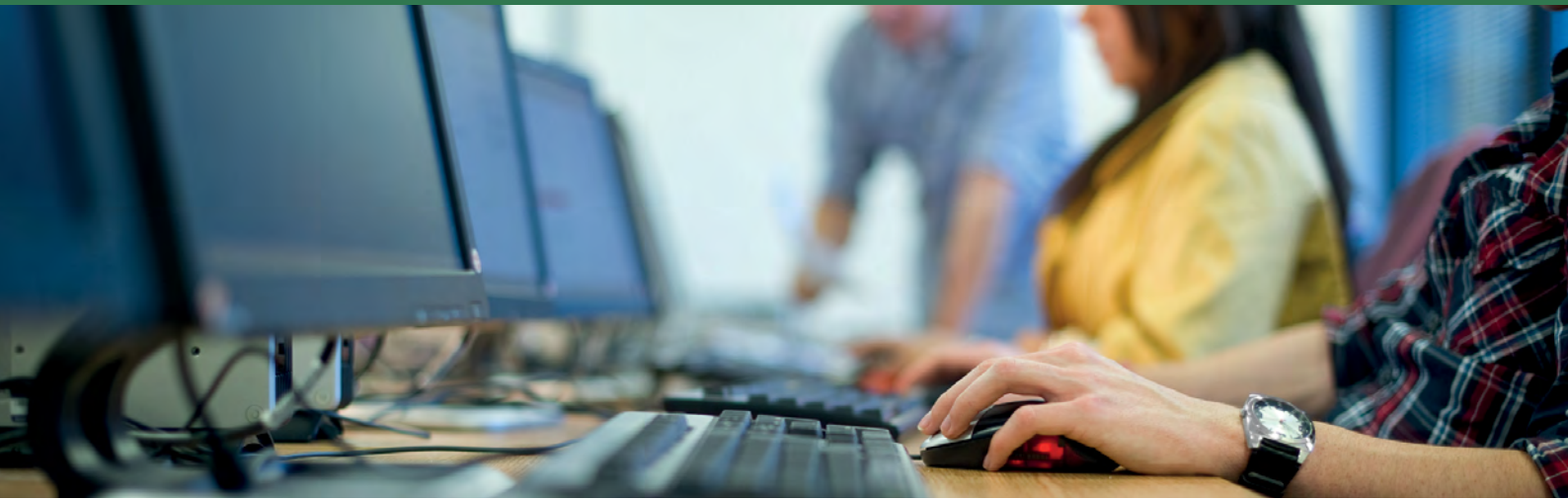


## TRAINING COURSE OUTLINE:

# FYB PATHWAY2CM



### Course Duration

1 ½ hours

### Delivery Mode

Remote training session via Microsoft Teams

Training is delivered within your environment to contextualise the training to your setup and build version

The training session will be recorded and provided upon conclusion of training for your reference

### Pre-requisites

Content Manager Proactive Administration and Maintenance

### Audience

Suitable for Content Manager Administrators and Pathway Administrators.

This training course allows you to have up to a maximum of 10 trainees to attend.

### Overview

This training course provides attendees with an understanding of how FYB's Pathway2CM can be used as a two way integration for information in Pathway and Content Manager.

Attendees will learn how to map and setup rules for how the integration between Content Manager and FYB's Pathway2CM is defined.

### Topics

This training course will cover the following within Pathway2CM:

- ▶ Providing an understanding on how Content Manager Record Types can be selected
- ▶ Providing an understanding on how record titling conventions can be applied for information generated into Content Manager from Pathway
- ▶ Mapping Pathway metadata to Additional Fields within Content Manager
- ▶ Adjusting configurations for each individual Pathway Module and corresponding object types within
- ▶ Providing an understanding of attachment options
- ▶ Accessing Pathway Information from within Content Manager

Please note that the provision of training materials or digital handouts are not included in the training. However, online help guides are available to reference and quotes for custom training materials can be provided upon request.

**TO BOOK NOW [CLICK HERE](#) OR CALL 1800 392 392**



1800 392 392 | [info@fyb.com.au](mailto:info@fyb.com.au) | [www.fyb.com.au](http://www.fyb.com.au)



Delivering the best Information Governance, Systems and Solutions to our customers.

**opentext™**



**PATHWAY2CM**  
BY FYB PTY LTD