

P Class North Island Championships

22nd & 23rd October 2022

The Organising Authority is the *Plimmerton Boating Club (PLBC)*
66 Moana Road, Plimmerton | Porirua, 5026

NOTICE OF RACE

NB: The notation '[DP]' in a rule in the Notice of Race means that the penalty for a breach of that rule may, at the discretion of the protest committee, be less than disqualification.

1 RULES

- 1.1 The regatta will be governed by the rules as defined in *The Racing Rules of Sailing*.
- 1.2 The Yachting New Zealand Safety Regulations Part 1 shall apply.
- 1.3 Racing rules are changed as follows:
 - RRS 40, *Personal Flotation Devices*, will be changed to require personal flotation devices to be worn at all times while afloat,
 - RRSs A4, *Low Points System*, and A5, *Scores Determined by the Race Committee*, will be changed to state that a boat starting later than 4 minutes after her starting signal will be scored Did Not Start
 - Racing Rule 61.1(a) will be changed to state that "A competitor intending to protest is required to inform the race committee at the finish line of their intention to protest immediately after finishing"
The change will appear in the Sailing Instructions. The Sailing Instructions may also change other racing rules.
- 1.4 The sailing instructions will consist of the instructions in RRS Appendix S, Standard Sailing Instructions, and Supplementary Sailing Instructions (SSI's) that will be on the official notice board located outside the slipway shed
- 1.5 Appendix T, Arbitration, will apply.
- 1.6 Appendix P shall apply as amended in the SSI's.

2 ADVERTISING

- 2.1 Boats may be required to display advertising chosen and supplied by the organising authority. [DP]

3 ELIGIBILITY AND ENTRY

- 3.1 The regatta is open to all boats of the P Class that comply with the PClass constitution and class rules.
- 3.2 To be eligible to compete in this event each competitor shall be a financial member of a club recognised by the competitor's national authority. Proof of affiliated club membership may be requested.

3.3

Eligible boats may enter by completing the online entry form and paying the entry fee by midnight Thursday 20th October 2022. Enter at <https://www.registernow.com.au/secure/Register.aspx?E=48017>

3.4 No Late registrations will be accepted

4 FEES

4.1 Required fees are as follows: \$85.00

5 COVID-19

5.1 The event will not go ahead during a Covid lockdown or other gathering restrictions are in force for the Wellington region. Refunds will be organised for those who have paid in advance in the event of a COVID related cancellation.

6 SCHEDULE

6.1 Briefing is at 09:00 on the first day of sailing outside the Plimmerton Boating Club clubrooms. This may change depending on the Covid-19 Alert Level and restrictions/guidelines in place at the time.

6.2 Racing is scheduled for Saturday 22nd and Sunday 23rd October 2022.

- Saturday 23rd 4 races for all fleets
Time of first warning 10:25 hours
- Sunday 24th 3 races for all fleets
Time of first warning 09:55 hours

6.3 A total of up to seven races are scheduled

6.4 One extra race per day may be sailed, provided that no fleet becomes more than one race ahead of schedule.

6.5 No warning signal will be made after 14:00 hours on Sunday 27th.

7 MEASUREMENT

7.1 No formal measuring will take place except that a boat may be inspected for compliance with the class rules at any time.

7.2 Each boat shall comply with Yachting NZ safety regulations Part 1. In particular this includes a rudder/tiller lock, a towing eye or fairlead, a centreboard lanyard, a suitable bailer tied on, the sail number written on the side of the hull in figures 50 mm high.

8 SAILING INSTRUCTIONS

8.1 The supplementary sailing instructions will be made available online at the Plimmerton Boating Club website www.plimmertonboatingclub.org.nz on or before 12pm 21st October 2022.

9 VENUE

9.1 Attachment A shows the location of the regatta venue.

9.2 Attachment B shows the location of the racing area.

10 THE COURSES

10.1 The courses to be sailed will be windward-leeward and/or triangle

11 SCORING

- 11.1** There are seven races scheduled.
- 11.2** Three races are required to be completed to constitute a series.
- 11.3** When fewer than four races have been completed, a boat's series score will be the total of her race scores.
- 11.4** When four races have been completed, a boat's series score will be the total of her race scores excluding her worst score

12 SUPPORT VESSELS

- 12.1** Support vessels must register with the Organizing Authority at Registration/Check-in.

13 HAUL-OUT RESTRICTIONS

- 13.1** All boats must launch and retrieve from Plimmerton Boating Club
- 13.2** Beach trolleys should be in a compact area either side of the launching ramp and kept clear of the thoroughfare to the main launching ramps
Note: There will be no security overnight at the club

14 RADIO COMMUNICATION

- 14.1** Except in an emergency, a boat that is racing shall not make voice or data transmissions and shall not receive voice or data communication that is not available to all boats. This restriction also applies to mobile telephones.

15 PRIZES

- 16** The North Island Championship trophy shall be awarded to the highest ranked Youth Sailor.
Other prizes may be awarded at the discretion of the Organising Authority

17 INSURANCE

- 17.1** Each participating boat shall be responsible for their own insurance. As a minimum a current 3rd party policy should be held.

18 DISCLAIMER OF LIABILITY

- 18.1** Competitors participate in the regatta entirely at their own risk. See RRS 4, Decision to Race. The organising authority will not accept any liability for material damage or personal injury or death sustained in conjunction with or prior to, during, or after the regatta.

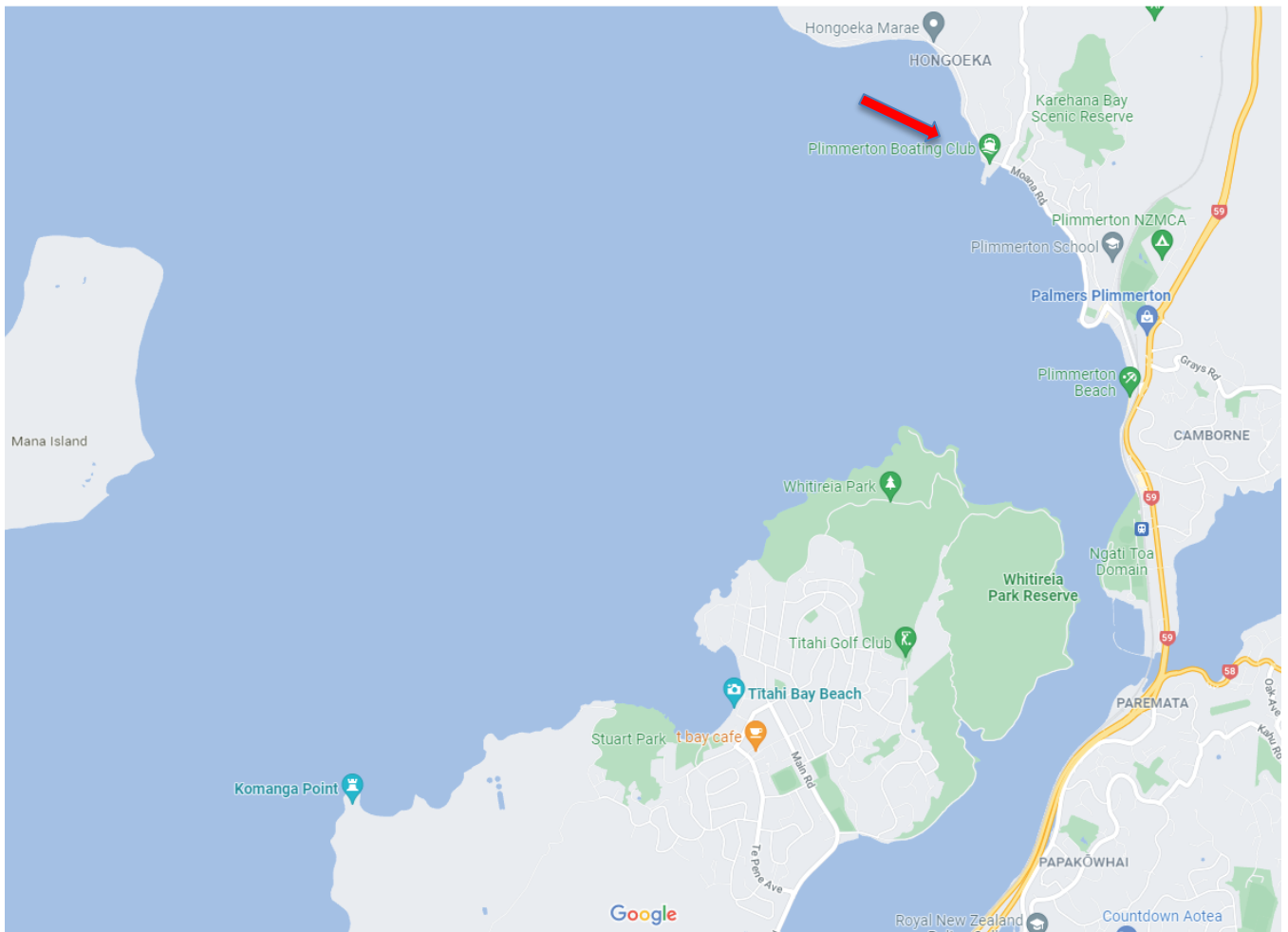
19 RIGHTS TO USE NAME AND LIKENESS

- 19.1** By participating in this event competitors automatically grant to the Organising Authority and the event sponsors the right, in perpetuity, to make, use, and show, at their discretion, any photography, audio and video recordings, and other reproductions of them made at the venue or on the water from the time of their arrival at the venue, until their final departure, without compensation.

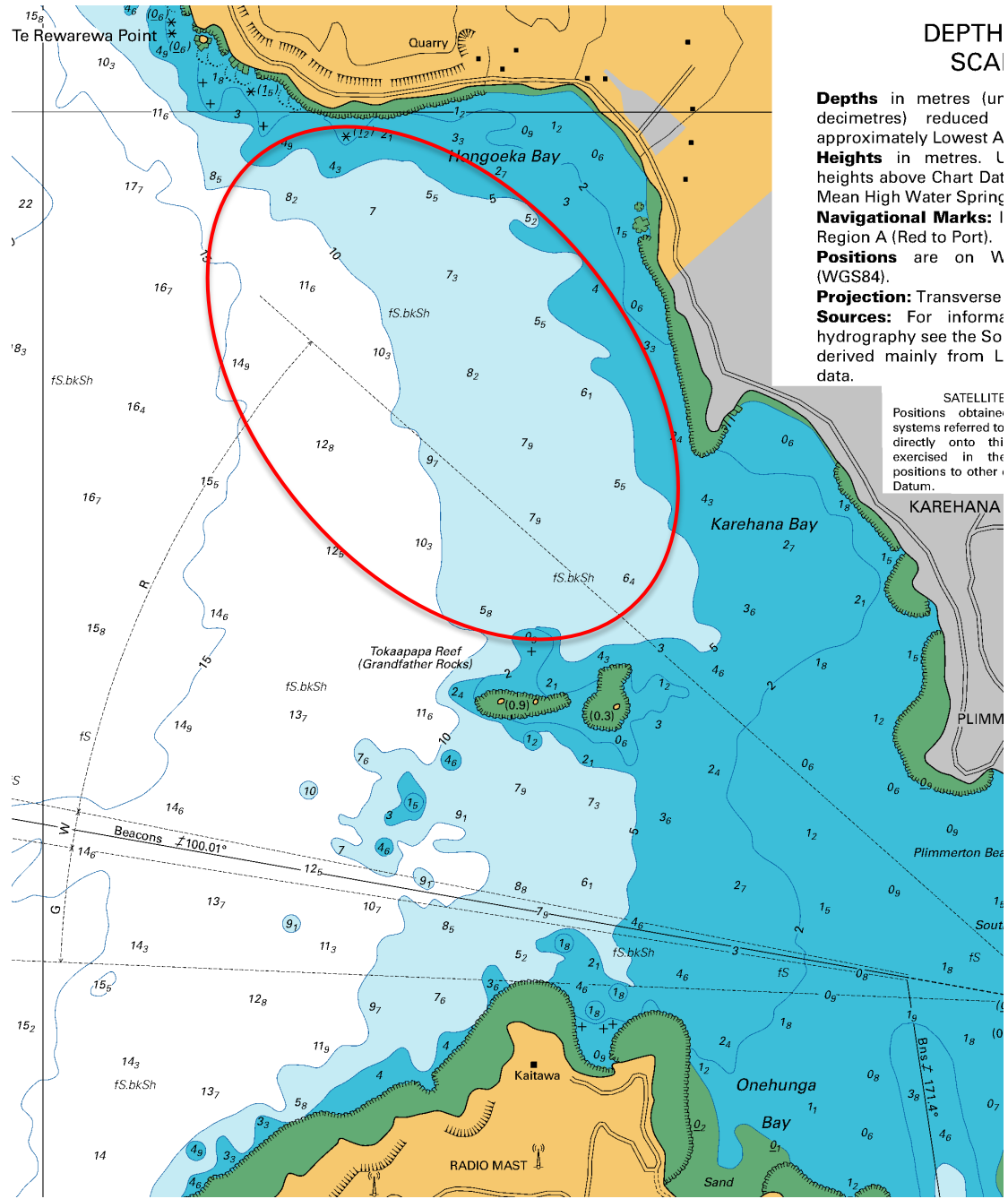
20 FURTHER INFORMATION

20.1 For further information please contact:
Todd Olson
sailing@plimmertonboatingclub.org.nz
021 612 004

ATTACHMENT A – Regatta Venue



ATTACHMENT B – Approximate Racing Area



DEPTH SCALE

Depths in metres (or decimetres) reduced approximately Lowest A

Heights in metres. U heights above Chart Dat Mean High Water Spring

Navigational Marks: I Region A (Red to Port).

Positions are on W (WGS84).

Projection: Transverse

Sources: For inform hydrography see the So derived mainly from L data.

SATELLITE Positions obtained systems referred to directly onto this exercised in the positions to other Datum.