

Starling North Island Championships,
incorporating Starling Association Traveller (South) Series

26th-27th March 2022

The Organising Authority is the *Plimmerton Boating Club (PLBC)*
66 Moana Road, Plimmerton | Porirua, 5026

SUPPLEMENTARY SAILING INSTRUCTIONS (SSI)

This sheet and Addendum A are supplements to Appendix S of the Racing Rules of Sailing
(page 146 RRS 2021-2024).

NOTICES TO COMPETITORS (SI 2)

SSI 1 The race office is located at PLBC Clubrooms
The official notice board is located beside the slipway shed at the PLBC Clubrooms.

SIGNALS MADE ASHORE (SI 4)

SSI 2 Signals ashore will be displayed on the flagstaff located at the PLBC start tower.

SSI 3 When flag AP is displayed ashore, '1 minute' is replaced with 'not less than 30 minutes' in Race Signals AP.

SSI 4 [DP] Flag D with one sound means 'Boats shall not leave the shore until this signal is made. The warning signal will not be made before the scheduled time or less than 30 minutes after flag D is displayed.'

SCHEDULE OF RACES AND CLASS FLAGS (SI 5 & 6)

Day/Date	Fleet/Class	Number of Races	Time of first warning signal	Class Flag
Sat 26 th March	Development Fleet	4	10:25	Class insignia (green star) on a white background.
Sat 26 th March	Open Fleet	4	10:30	Class insignia (red star) on a white background.
Sun 27 th March	Development Fleet	3	09:55	Class insignia (green star) on a white background.
Sun 27 th March	Open Fleet	3	10:00	Class insignia (red star) on a white background.

SSI 5 On Sunday 27th March no warning signal will be made after 14:00.

COURSES (SI 7)

SSI 6 The approximate race area and courses to be sailed, the order in which the marks are to be passed, and the side on which each mark is to be left are shown in Addendum A.

SSI 7 In the event that a gate mark is missing and has not been replaced with an object displaying flag M, the remaining mark shall be rounded to port.

MARKS (SI 8)

SSI 8 The description of the marks is below each course diagram shown in Addendum A.

THE START (SI 9)

SSI 9 To alert boats that a race or sequence of races will begin soon, the orange starting line flag will be displayed with one sound at least five minutes before a warning signal is made.

SSI 10 When a starting sequence is in progress, boats whose warning signal has not been made shall avoid the starting area. The starting area is defined as the area 50 metres from the starting line and marks in all directions.

SSI 11 A boat starting later than four minutes after her starting signal will be scored Did Not Start without a hearing. This changes RRS A5.1 and 5.2.

TIME LIMITS (SI 12)

Target time for first finisher	Finish Window	Race time limit
45 minutes	20 minutes	70 minutes

There is no prescribed time limit for the first boat to pass mark 1.

PENALTY SYSTEM

SSI 12 Appendix P is changed by SSI 14 and SSI 15

SSI 13 RRS P2.2 and P2.3 are deleted and RRS P2.1 is amended to “When a boat is penalised under RRS P1 her penalty shall be a Two-Turns Penalty under RRS 44.2. If she fails to take it she shall be disqualified without a hearing.”

SSI 14 If a boat is penalized under Appendix P2.1 after she has finished, she shall be given a scoring penalty of 10%, scored in accordance with RRS 44.3© without a hearing.

CHECK OUT AND CHECK IN

SSI 15 Boats shall comply with the following check out and check in procedure:

- a. Competitors shall individually check out before racing by personally signing the check-out sheets located at the launching ramp. (DP)
- b. Competitors shall individually check-in immediately on returning to shore after racing, by personally signing the check-in sheets located at the launching ramp. (DP)
- c. A boat that retires from a race or returns to the launching area before she finished shall notify the Race Office as soon as possible. (DP)

REPLACEMENT OF CREW OR EQUIPMENT

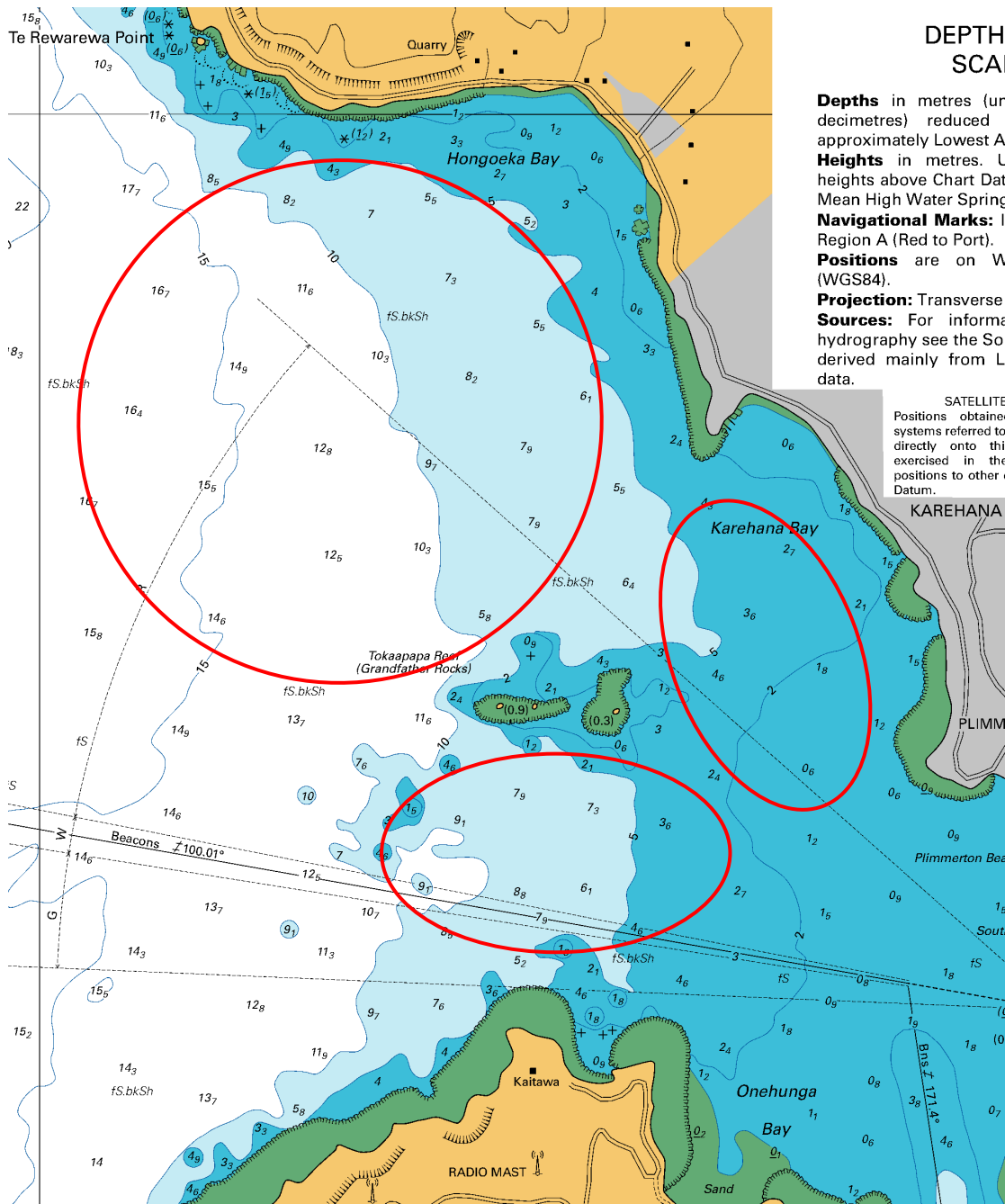
SSI 16 Substitution of competitors will not be allowed.

SSI 17 Substitution of damaged or lost equipment is not allowed unless authorized in writing by the Principal Race Officer. Requests for substitution shall be made to the committee at the first reasonable opportunity, which may be after the race. (DP)

SUPPORT VESSELS

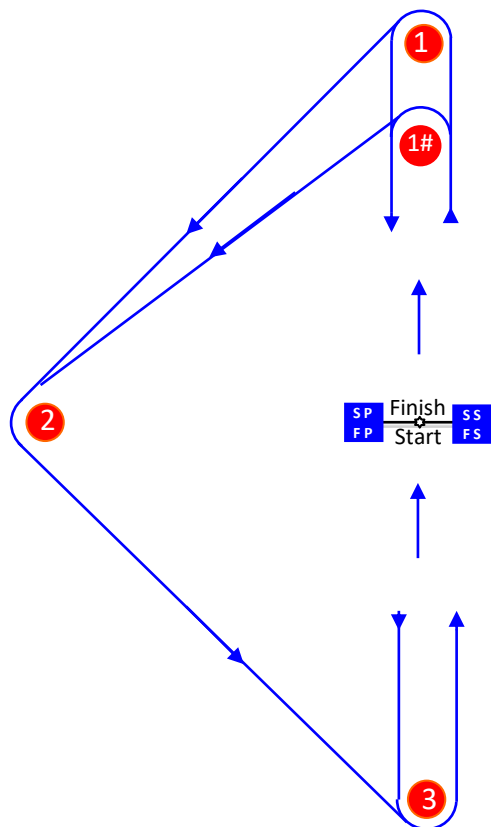
SSI 18 All official and support vessels shall always have an engine safety cut out switch (kill cord) attached to the driver while the engine is running unless prior written exemption has been provided by the Organising Authority.

Addendum A – Approximate Course Area



Course Illustration – Triangular course with start finish middle of beat

T



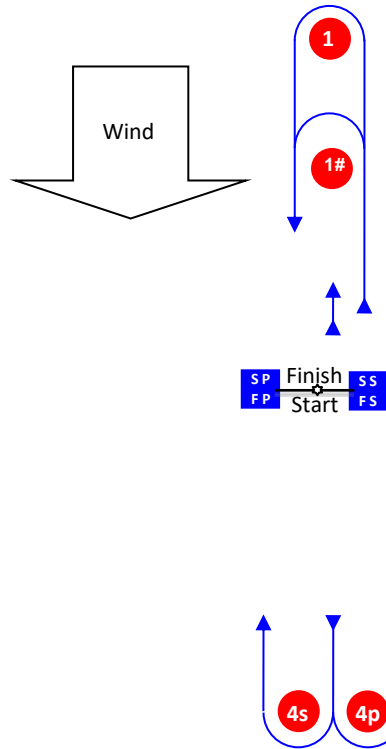
Course: Triangular course start finish middle of beat

Signal	Mark Rounding Order	Signal	Mark Rounding Order
T1	Start – 1 – 2 – 3 – Finish	T1#	Start – 1 – 2 – 3 – Finish
T2	Start – 1 – 2 – 3 – 1 – 3 – Finish	T2#	Start – 1 – 2 – 3 – 1 – 3 – Finish
T3	Start – 1 – 2 – 3 – 1 – 3 – 1 – 2 – 3 – Finish	T3#	Start – 1 – 2 – 3 – 1 – 3 – 1 – 2 – 3 – Finish

Mark	Description
1	Orange cylindrical buoy
1#	Yellow cylindrical buoy
2	Orange cylindrical buoy
3	Orange cylindrical buoy
SS Starting mark starboard end	Staff flying orange flag on committee boat
SP Starting mark port end	Orange flag dan buoy
FS Finishing mark starboard end	Staff flying blue flag on committee boat
FP Finishing mark port end	Orange flag dan buoy

Course Illustrations – Windward course with start finish middle of beat

W



Course: Windward course start finish middle of beat

Signal	Mark Rounding Order	Signal	Mark Rounding Order
W1	Start – 1 – 4s/4p – Finish	W1#	Start – 1# – 4s/4p – Finish
W2	Start – 1 – 4s/4p – 1 – 4s/4p – Finish	W2#	Start – 1# – 4s/4p – 1# – 4s/4p – Finish
W3	Start – 1 – 4s/4p – 1 – 4s/4p – 1 – 4s/4p – Finish	W3#	Start – 1# – 4s/4p – 1# – 4s/4p – 1# – 4s/4p – Finish

Mark	Description
1	Orange cylindrical buoy
1#	Yellow cylindrical buoy
4s 4p	Orange cylindrical buoys
SS Starting mark starboard end	Staff flying orange flag on committee boat
SP Starting mark port end	Orange flag dan buoy
FS Finishing mark starboard end	Staff flying orange flag on committee boat
FP Finishing mark port end	Orange flag dan buoy