

# Starling North Island Championships, incorporating Starling Association Traveller (South) Series

26<sup>th</sup>-27<sup>th</sup> March 2022

The Organising Authority is the *Plimmerton Boating Club (PLBC)*  
*66 Moana Road, Plimmerton | Porirua, 5026*

## NOTICE OF RACE

NB: The notation '[DP]' in a rule in the Notice of Race means that the penalty for a breach of that rule may, at the discretion of the protest committee, be less than disqualification.

### 1 RULES

- 1.1 The regatta will be governed by the rules as defined in *The Racing Rules of Sailing*.
- 1.2 The Yachting New Zealand Safety Regulations Part 1 shall apply.
- 1.3 Racing rules are changed as follows:
  - RRS 40, *Personal Flotation Devices*, will be changed to require personal flotation devices to be worn at all times while afloat,
  - RRSs A4, *Low Points System*, and A5, *Scores Determined by the Race Committee*, will be changed to state that a boat starting later than 4 minutes after her starting signal will be scored Did Not Start
  - Racing Rule 61.1(a) will be changed to state that "A competitor intending to protest is required to inform the race committee at the finish line of their intention to protest immediately after finishing"  
The change will appear in the Sailing Instructions. The Sailing Instructions may also change other racing rules.
- 1.4 The sailing instructions will consist of the instructions in RRS Appendix S, Standard Sailing Instructions, and Supplementary Sailing Instructions (SSI's) that will be on the official notice board located outside the slipway shed
- 1.5 Appendix T, Arbitration, will apply.
- 1.6 Appendix P shall apply as amended in the SSI's.

### 2 ADVERTISING

- 2.1 Boats may be required to display advertising chosen and supplied by the organising authority. [DP]

### 3 ELIGIBILITY AND ENTRY

- 3.1 The regatta is open to all boats of the Starling Class that comply with the Starling Class constitution and class rules.
- 3.2 All competitors shall be current financial members of the Starling Class Association (SCA).

- 3.3** To be eligible to compete in this event each competitor shall be a financial member of a club recognised by the competitor's national authority. Proof of affiliated club membership may be requested.
- 3.4** The Development Fleet is to encourage less experienced and less confident Starling sailors to sail and participate at major Starling regattas. To be eligible to race in the Development Fleet a competitor shall not have previously raced in Open Fleet except where no Development Fleet was offered.

Eligible boats may enter by completing the online entry form and paying the entry fee by midnight Thursday 24<sup>th</sup> March 2022. Enter at <https://www.registernow.com.au/secure/Register.aspx?E=46171>

**3.5** No Late registrations will be accepted

#### **4 FEES**

**4.1** Required fees are as follows:

Starling and Starling Development Fleet \$80

#### **5 COVID-19**

- 5.1** The event will not go ahead during a Covid lockdown or other gathering restrictions are in force for the Wellington region. Refunds will be organised for those who have paid in advance in the event of a COVID related cancellation.
- 5.2** This event, due to the relative small size is classified as a Gathering, for which active participants must be fully vaccinated.
- 5.3** You will be required to have and show your vaccination certificate and be scanned in to be part of the Gathering. A wrist band will be issued and will be required to be worn by all sailors, coaches, volunteers and support personnel. If you lose your wrist band a new one will be made available.
- 5.4** Please use the contact tracing app while at the event. Scan in upon arrival each day using one of the QR codes around the club, turn on your Bluetooth for contact tracing purposes. There are manual sign-in forms available in the clubhouse if you do not have the app on your phone (although we do recommend you download it).
- 5.5** Ensure that all sailors, supporters and family record your attendance at this event each day
- 5.6** Utilise the 1m physical distancing and wearing of a mask at all practical times
- 5.7** DO NOT attend if you are feeling unwell or have been in close contact with someone confirmed with COVID-19 in the past 14 days
- 5.8** Practice good hygiene and ensure your sailors practice good hygiene, use soap to wash your hands thoroughly and there will be hand sanitiser around the club for your use as well
- 5.9** Alert race officials if you become unwell during or soon after the event so we can implement our Covid-19 response plan.
- 5.10** For the avoidance of doubt any person who does not present a vaccination certificate may not enter any part of the PLBC club and areas immediately surrounding the club. Such that those persons do not form any part of the Gathering. All sailors 12 years 3 month old or younger are deemed to be vaccinated.

#### **6 SCHEDULE**

- 6.1** Competitor check-in 08:00 – 09:00 hours at Plimmerton Boating Club on the first day of sailing.
- 6.2** Briefing is at 09:00 on the first day of sailing outside the Plimmerton Boating Club clubrooms. This may change depending on the Covid-19 Alert Level and restrictions/guidelines in place at the time.
- 6.3** Racing is scheduled for Saturday 26<sup>th</sup> and Sunday 27<sup>th</sup> March 2022.
- Saturday 26<sup>th</sup>           4 races for all fleets  
                                  Time of first warning 10:25 hours
  - Sunday 27<sup>th</sup>            3 races for all fleets  
                                  Time of first warning 09:55 hours
- 6.4** A total of up to seven races are scheduled
- 6.5** One extra race per day may be sailed, provided that no fleet becomes more than one race ahead of schedule.
- 6.6** No warning signal will be made after 14:00 hours on Sunday 27<sup>th</sup>.

## **7 MEASUREMENT**

- 7.1** Each boat shall be registered on the Starling Class Association measurement list.
- 7.2** No formal measuring will take place except that a boat may be inspected for compliance with the class rules at any time.
- 7.3** Each boat shall comply with Yachting NZ safety regulations Part 1. In particular this includes a rudder/tiller lock, a towing eye or fairlead, a centreboard lanyard, a suitable bailer tied on, the sail number written on the side of the hull in figures 50 mm high.

## **8 SAILING INSTRUCTIONS**

- 8.1** The supplementary sailing instructions will be made available online at the Plimmerton Boating Club website [www.plimmertonboatingclub.org.nz](http://www.plimmertonboatingclub.org.nz) on or before 12pm 19<sup>th</sup> March.

## **9 VENUE**

- 9.1** Attachment A shows the location of the regatta venue.
- 9.2** Attachment B shows the location of the racing area.

## **10 THE COURSES**

- 10.1** The courses to be sailed will be windward-leeward and/or triangle

## **11 SCORING**

- 11.1** There are seven races scheduled.
- 11.2** Three races are required to be completed to constitute a series.
- 11.3** When fewer than four races have been completed, a boat's series score will be the total of her race scores.
- 11.4** When four races have been completed, a boat's series score will be the total of her race scores excluding her worst score

## **12 SUPPORT VESSELS**

- 12.1** Support vessels must register with the Organizing Authority at Registration/Check-in.

## **13 HAUL-OUT RESTRICTIONS**

- 13.1** All boats must launch and retrieve from Plimmerton Boating Club
- 13.2** Beach trolleys should be in a compact area either side of the launching ramp and kept clear of the thoroughfare to the main launching ramps  
Note: There will be no security overnight at the club

**14 RADIO COMMUNICATION**

- 14.1** Except in an emergency, a boat that is racing shall not make voice or data transmissions and shall not receive voice or data communication that is not available to all boats. This restriction also applies to mobile telephones.

**15 PRIZES**

- 16** The North Island Championship trophy shall be awarded to the highest ranked Youth Sailor.  
Other prizes may be awarded at the discretion of the Starling Association and Organising Authority

**17 INSURANCE**

- 17.1** Each participating boat shall be responsible for their own insurance. As a minimum a current 3rd party policy should be held.

**18 DISCLAIMER OF LIABILITY**

- 18.1** Competitors participate in the regatta entirely at their own risk. See RRS 4, Decision to Race. The organising authority will not accept any liability for material damage or personal injury or death sustained in conjunction with or prior to, during, or after the regatta.

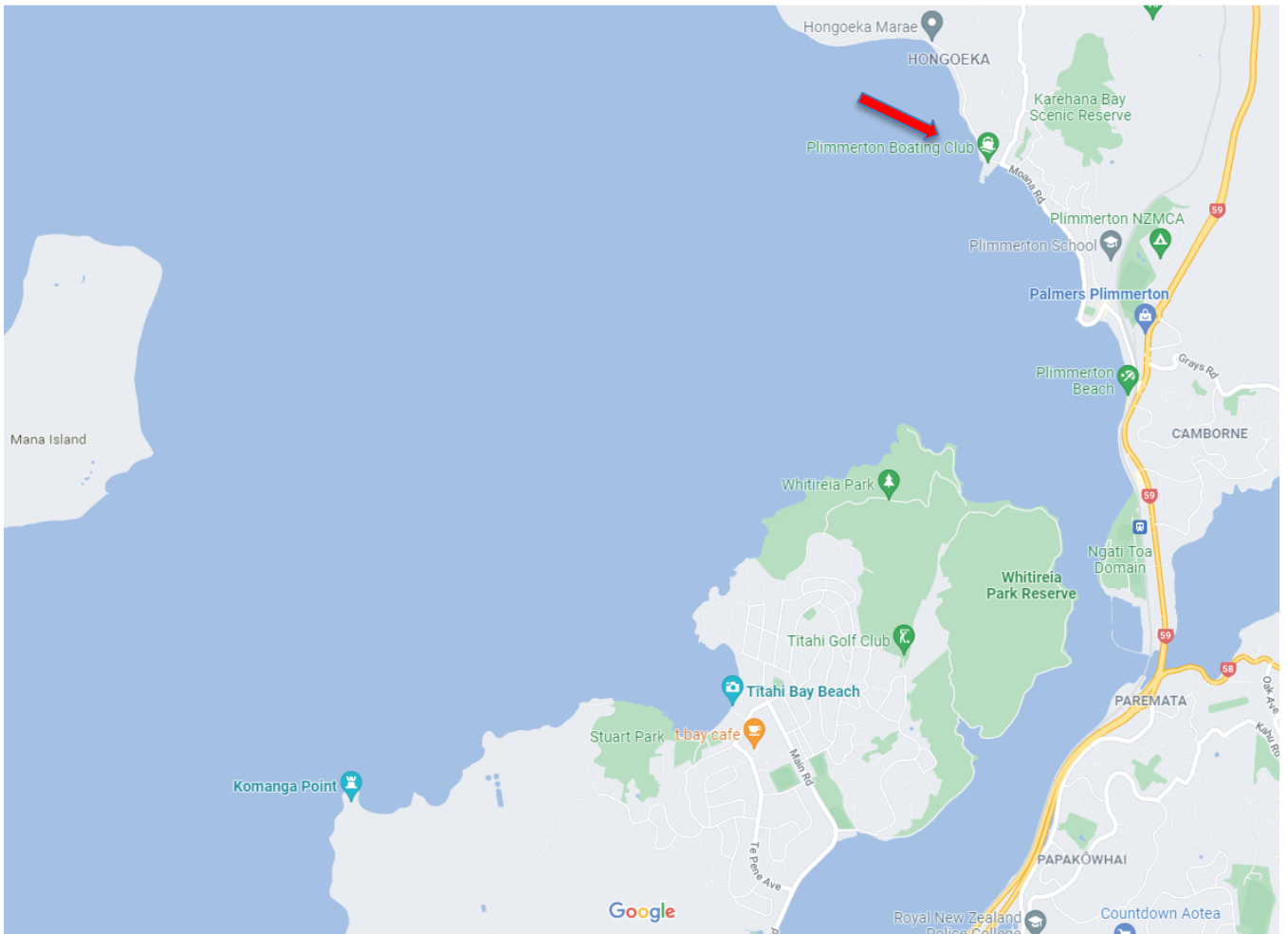
**19 RIGHTS TO USE NAME AND LIKENESS**

- 19.1** By participating in this event competitors automatically grant to the Organising Authority and the event sponsors the right, in perpetuity, to make, use, and show, at their discretion, any photography, audio and video recordings, and other reproductions of them made at the venue or on the water from the time of their arrival at the venue, until their final departure, without compensation.

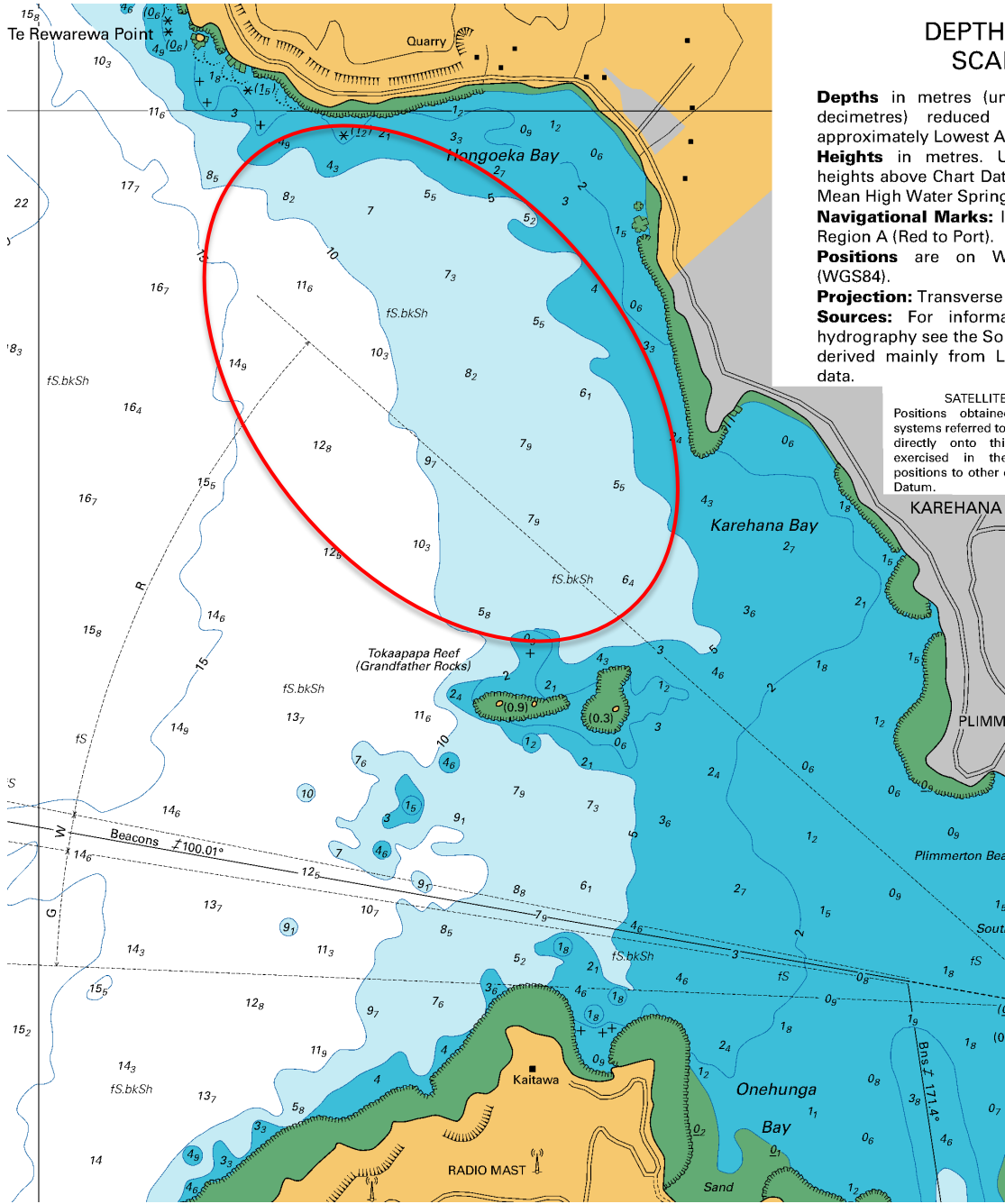
**20 FURTHER INFORMATION**

- 20.1** For further information please contact:  
Todd Olson  
[sailing@plimmertonboatingclub.org.nz](mailto:sailing@plimmertonboatingclub.org.nz)  
021 612 004

# ATTACHMENT A – Regatta Venue



# ATTACHMENT B – Approximate Racing Area



## DEPTH SCALE

**Depths** in metres (or decimetres) reduced approximately Lowest A

**Heights** in metres. U heights above Chart Dat Mean High Water Spring

**Navigational Marks:** I Region A (Red to Port).

**Positions** are on W (WGS84).

**Projection:** Transverse

**Sources:** For inform hydrography see the So derived mainly from L data.

SATELLITE Positions obtained systems referred to directly onto this exercised in the positions to other Datum.

KAREHANA

PLIMM

Plimmerton Bay

Sout

Bus 171.4