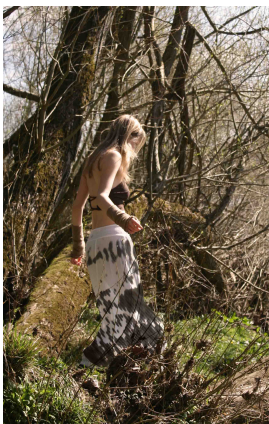


# ELLEN BERRY

BA (H) TEXTILE DESIGN



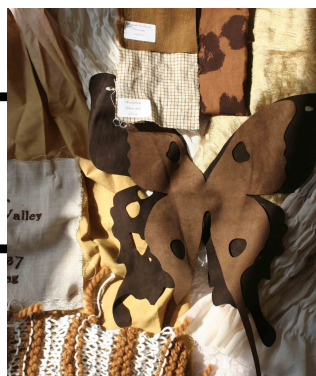
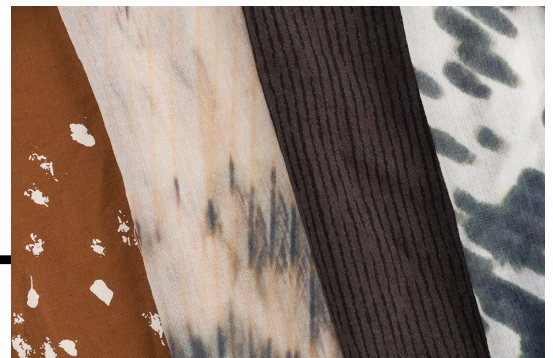
'Fae' tells a story of woman and nature. Through use of organic, recycled, and second-hand materials, I aim to create a collection that is environmentally conscious and texturally beautiful. Using natural plant dyes as an alternative to harsh chemical dyes, I highlight the array of rich colours that can be achieved without excessively damaging the environment. Through my collection, I hope to seamlessly intertwine the earthy textures found in forests with the ethereal patterns found on butterflies, a creature symbolic of femininity.



CONTACT

INSTAGRAM

LINKEDIN



GRADUATED 2021  
#WEARECREATIVESNTU