

BECKY SHERWIN

BA (H) PHOTOGRAPHY



Wrasse explores how outward expression is tied to gender identity, via fashion portraits. The continuity between the subjects is the age they are; a period between adolescence and adulthood where often we find the character we are really are. Named after the species of fish that changes gender across its life cycle, Wrasse explores gender identity as a notion that is completely isolated from an individual's biological sex. With some fashion imagery becoming intertwined within gender politics, this book looks at the performance of gender in relation to fashion. By making the connection between one's identity and clothing preference, Wrasse is synonymous with the concept of gender as something that can never be static. Instead, gender is illustrated here as something that consists of a set of external, unstable characteristics – in this case clothing.

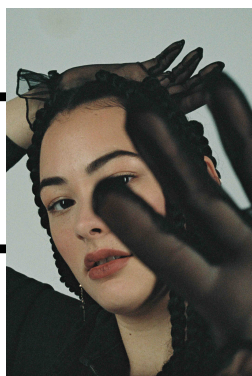
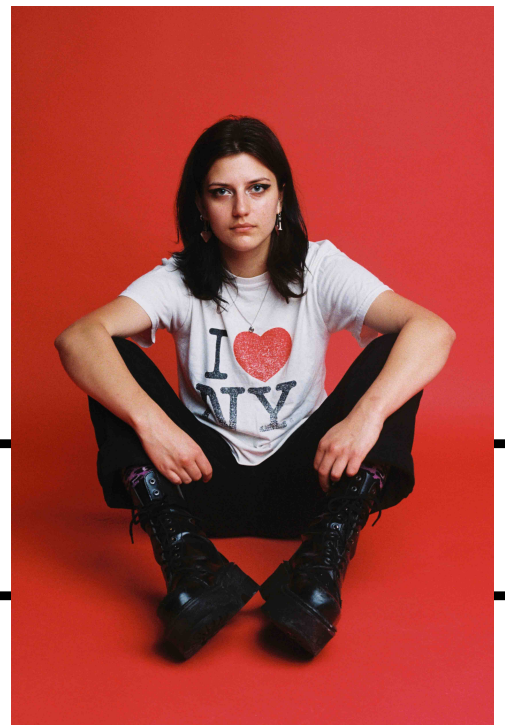


CONTACT

WEBSITE

INSTAGRAM

LINKEDIN



NTU

GRADUATED 2021
#WEARECREATIVESNTU