

We Now Offer

Available  
In Rectangle  
& Square  
Designs

# BLANK Laminated\* Wood PLAQUES

(Maximum Size  
Up To: 20" x 25")

*CUSTOMIZE & PERSONALIZE*  
*Your Customers' Plaques*

*Available Grains, Textures, & Color Backgrounds:*



Mahogany



Oak



Walnut



Camouflage



Burl



Pearl



White



Black



Yellow



Red



Blue



Green



Orange



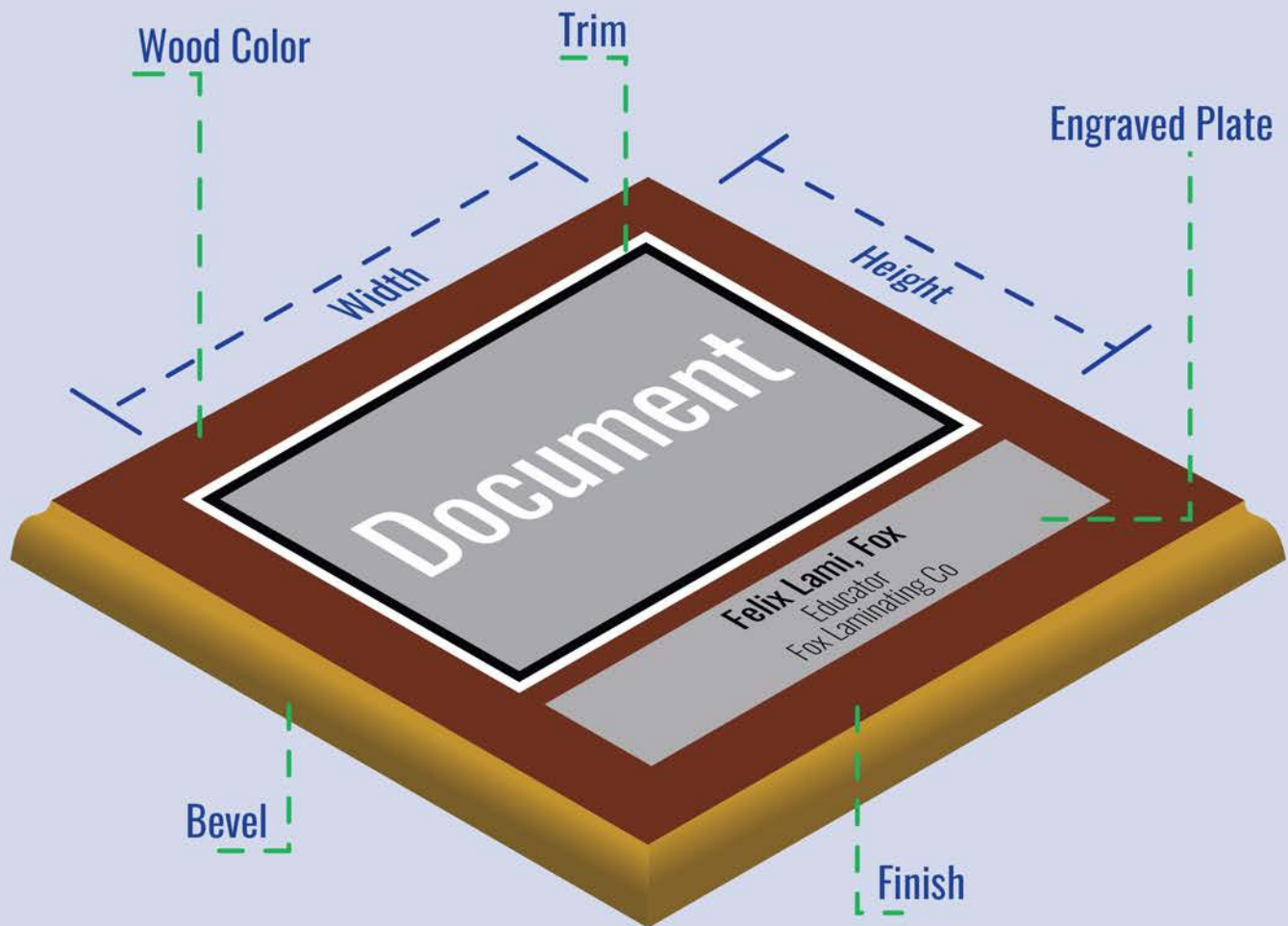
Purple

*Laminating Finishing Options: Gloss, Matte, Linen*

*\*Non-Laminating Background Options: Mahogany, Black, Walnut*

**CALL TODAY FOR A QUOTE**

# WHAT'S WHAT



Above is a diagram of everything that you might need to know or understand before moving forward with placing your order. For instance, the **Bevel** is the outside edge of the Plaque. The **Engraved Plate** is the metallic recognition piece, containing text that is typically below the **Document**. The plate can be provided by you or we can make you one on site. The Trim is the colored border that surrounds your Document. The **Wood Color**, shown as **Mahogany** above, is the visible area of the plaque between the Document and the Bevel. The **Width** and the **Height** are the dimensions of the Document needed to make the custom sizing of the Plaque. The **Finish** determines whether your document will shine in the light, be matte, or resemble a canvas.



## DETERMINING SIZE

So you have your document, but how does one measure it? The measurements determine the cost of the final product. If you're only using one document on your plaque, perhaps to showcase a diploma or a degree, or a wedding photo, measure the height and width of the document, then multiply those numbers.

The calculator on your phone or computer can do it for you quite easily.

### HEIGHT X WIDTH = AREA IN SQUARE INCHES

All pricing is based on the total square inches of your document(s).

If you're considering using multiple documents, such as a newspaper article with a mast head cutout and a separate article from that newspaper, or a picture collage, here's our suggestion: Find an empty tabletop or space to lay your documents out. The layout is completely up to you, but make sure to leave 1" of space between documents. Take a picture of your layout to send to us for reference. Lastly, measure your completed layout's height and width, and use the same formula as above. Don't forget to send your layout with your documents upon ordering, and in all instances, the document cannot be larger than 20" x 25".

## BOARD BACKGROUNDS

We have seven standard **colors**\*:  
GREEN, RED, BLACK, BLUE, WHITE, ORANGE & PEARL

We have four **wood grain backgrounds**:  
WALNUT, OAK, BURL & MAHOGANY



*\*Don't see a color? Please let us know. We also carry a variety of custom backgrounds, like purple, pink, yellow, orange, & camouflage, to name a few.*

## TRIM COLORS



The **trim** is the border around the document or picture on any Deluxe or Slimline Bevel Plaque. By default, the trim matches the beveled edge.

It comes at a standard 3/16", but can be upped to 1/8" for an additional charge.

**Double trim** is a second border around your image or document, which is also available at an additional charge.

### Single Trim



### Double Trim





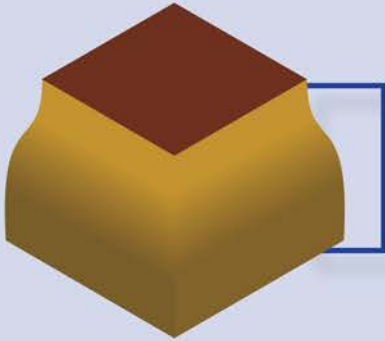
---

## BEVELED EDGE

---

### Deluxe

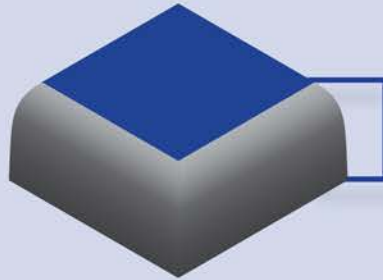
3/4" wood board



HIGH QUALITY HARDWOOD WITH PRECISION,  
BEVELED EDGE CUT

### Slimline

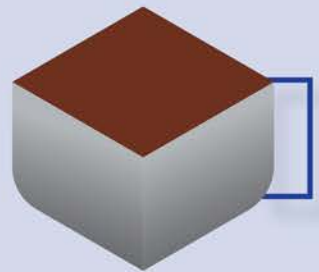
1/2" wood board



HIGH QUALITY HARDWOOD WITH PRECISION,  
BEVELED EDGE CUT

### Clean Cut

1/2" wood board

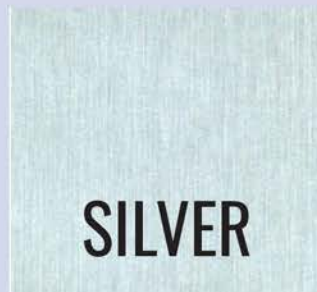


HIGH QUALITY HARDWOOD,  
STRAIGHT EDGE CUT & MOST ECONOMICAL  
**NO BOARD COLOR OR TRIM OPTION.**

---

## BEVEL COLORS

---

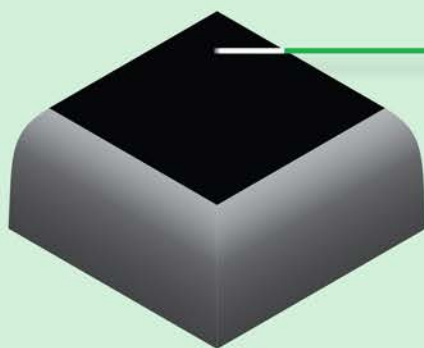


# BOARD FINISH

The finish may be one of the laminations we have available, or you may choose to have no lamination altogether.

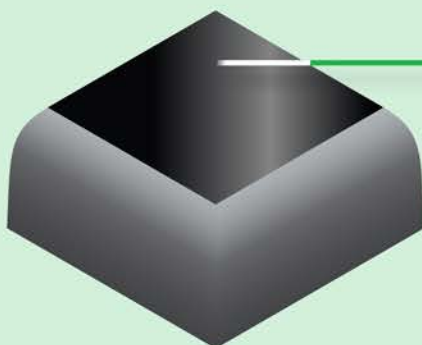
The choice is yours.

We have several finishing options to compliment your documents and/or images for your plaque to shine and stand-out above the rest.



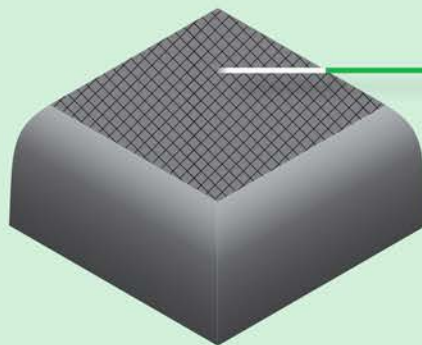
## Matte

NON-REFLECTIVE TO LIGHT



## Glossy

SMOOTH & SHINY AS GLASS



## Linen

CANVAS-LIKE TEXTURE

# CUSTOM OPTIONS

*Additional fees may apply*

## Engraved Plate

AVAILABLE IN BRASS & SILVER

*Michael Williams, PhD*  
*DEAN*  
*Thomas Edison State College*

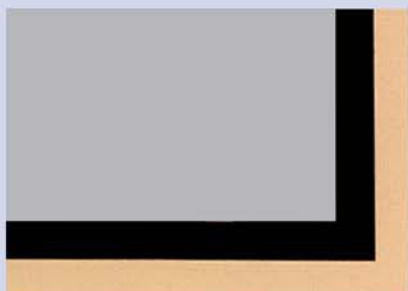
## Grain Direction

VERTICAL OR HORIZONTAL



## Double Trim

DOCUMENT BORDER WITH 2 COLORS



## Exact Finish Size

SIDE-BY-SIDE MATCHING



## Hanging Cord\*

BACKING



## Hanging Strips

DAMAGE-FREE HANGING BACKING



## Easel Stand

BACKING



*\* All plaques come with a hanger hole.*



# ENGRAVED PLATES

One of our most popular custom options is an engraved plate.

When ordering an engraved plate, please send a MS Word file via email with the text, font, and font styling such as bold or italics. If we do not have the font you've selected, we'll use the closest matching font available. If you're shipping the documents to us, please reference that in the email. If you're emailing your documents, attach the engraved plate word document to the same email.

## Single Brass

BRASS PLATE WITH BLACK TEXT

*Michael Williams, PhD*  
DEAN  
*Thomas Edison State College*

## Single Silver

SILVER PLATE WITH BLACK TEXT

*Michael Williams, PhD*  
DEAN  
*Thomas Edison State College*

## Reverse Brass

BLACK PLATE WITH BRASS TEXT

*Michael Williams, PhD*  
DEAN  
*Thomas Edison State College*

## Reverse Silver

BLACK PLATE WITH SILVER TEXT

*Michael Williams, PhD*  
DEAN  
*Thomas Edison State College*

## Double Brass

BRASS PLATE WITH BLACK TEXT AND BORDER

*Michael Williams, PhD*  
DEAN  
*Thomas Edison State College*

## Double Silver

SILVER PLATE WITH BLACK TEXT AND BORDER

*Michael Williams, PhD*  
DEAN  
*Thomas Edison State College*

## Double Reverse Brass

BLACK PLATE WITH BRASS TEXT AND BORDER

*Michael Williams, PhD*  
DEAN  
*Thomas Edison State College*

## Double Reverse Silver

BLACK PLATE WITH SILVER TEXT AND BORDER

*Michael Williams, PhD*  
DEAN  
*Thomas Edison State College*